

# Appendix A

## Internet mirroring robot (Pavuk) configuration

```
% Don't show any messages on the screen
Quiet: false
% Run in background mode
BgMode: false
% Checks if it is running as background job
% if so do not output any messages
CheckIfRunnigAtBackground: false
% Show retrieving progress while running in
% the terminal
ShowProgress: false
% Output debugging information
Debug: true
% Debugging information will contain details
% on URLs that could not be mirrored
DebugLevel: limits
% Number of directory levels to omit in local tree.
BaseLevel: 1
% Assign unique local filename to unique URL
UniqueDocName: true
% replace special characters from URL into local filename
TrChrToChr: "\"\\ ?&*$;.:, @=+[ ] ( ) { } < > ' ' ! % ^ ~ " " _ "
% Local directory where all retrieved documents are stored
WorkingDir: pavuk_data
```

```
% System information will be printed in this file
LogFile: ../pavuk.log
% Summary of system information will be printed in this file
SLogFile: ../pavuk.slog

StoreDocInfoFiles: true
SeparateInfoDir: ../pavuk_info
DumpFD: -1
DumpUrlFD: -1
SinglePage: false
MaxLevel: 3
MaxDocs: 0
SleepBetween: 1
RandomizeSleepPeriod: false
MaxRetry: 2
MaxRegets: 2
MaxRedirections: 5
CommTimeout: 0.5
RegetRollbackAmount: 0
UseCache: false
UseRobots: true
AllowHTTP: true
AllowSSL: true
AllowFTP: false
AllowFTPS: false
AllowGopher: false
AllowCGI: true
AllowGZEncoding: true
AllowRelocation: false
FTPhtml: false
FTPListCMD: false
AllowFTPRecursion: true
StoreDirIndexFile: true
ForceReget: true
DisallowedSuffixes: .css,.gif,.jpeg,.jpg,.jpe,.png,.mpeg,.mpg,.mp3,.smi,.smil,.qt,
    .mov,.pdf,.eps,.ps,.doc,.rtf,.ppt,.xls,.exe,.avi,.ra,.ram,.rm,.wav,.au
AllowedMIMEtypes: text/html,text/html;*
HTTPAuthorizationScheme: Basic
AuthReuseDigestNonce: false
AuthReuseProxyDigestNonce: false
EmailAddress: webmaster@eaccess.rince.ie
```

SendFromHeader: false  
DefaultMode: normal  
GopherViaHTTPProxy: false  
FTPViaHTTPProxy: false  
FTPDirtyProxy: false  
MaxSize: 0  
MinSize: 0  
HTTPProxyAuth: Basic  
ShowDownloadTime: true  
RemoveOldDocuments: false  
ActiveFTPData: false  
NLSMessageCatalogDir: /usr/local/share/locale  
Language: en\_US  
Reschedule: 0  
SiteLevel: 0  
DontLeaveSite: false  
DontLeaveDir: false  
LeaveSiteEnterDirectory: false  
PreserveTime: true  
PreservePermissions: false  
PreserveAbsoluteSymlinks: false  
LeaveLevel: 0  
CookieSend: true  
CookieRecv: true  
CookieUpdate: false  
CookieCheckDomain: true  
CookiesMax: 0  
DisableHTMLTag: IMG, SRC; INPUT, SRC; BODY, BACKGROUND  
IndexName: \_auto\_index.html  
CheckSize: true  
BgMode: false  
MaxRate: 0.000  
MinRate: 0.000  
ReadBufferSize: 32  
FileSizeQuota: 0  
TransferQuota: 225  
FSQuota: 0  
EnableJS: false  
AllLinksToLocal: false  
SelectedLinksToLocal: false  
AllLinksToRemote: false

AutoReferer: false  
UrlSchedulingStrategy: level  
RemoveAdvertisement: false  
SendIfRange: true  
SchedulingCommand: at -f %f %t %d.%m.%Y  
UniqueLogName: false  
SSLVersion: ssl23  
UniqueSSLID: false  
UseHTTP11: true  
DeleteAfterTransfer: false  
RetrieveSymlinks: false  
LimitInlineObjects: true  
FixWuFTPDBrokenLISTcmd: false  
PostUpdate: false  
HackAddIndex: false  
SkipURLREMatchPattern: `http(s?):\/\/([^\s]+)\/`

# Appendix B

## Case-variations of Formal Public Identifiers

- HTML 4.01 Strict

- `"-//W3C//DTD HTML 4.01//EN"` (typical usage)
- `"-//w3c//dtd html 4.01//en"`

- HTML 4.01 Transitional

- `"-//W3C//DTD HTML 4.01 Transitional//EN"` (typical usage)
- `"-//w3c//dtd html 4.01 transitional//en"`
- `"-//W3C//DTD HTML 4.01 transitional//EN"`

- HTML 4.01 Frameset

- `"-//W3C//DTD HTML 4.01 Frameset//EN"` (typical usage)
- `"-//w3c//dtd html 4.01 frameset//en"`
- `"-//W3C//DTD HTML 4.01 frameset//EN"`

- HTML 4.0 Strict

- `"-//W3C//DTD HTML 4.0//EN" (typical usage)`
- `"-//w3c//dtd html 4.0//en"`

- HTML 4.0 Transitional

- `"-//W3C//DTD HTML 4.0 Transitional//EN" (typical usage)`
- `"-//w3c//dtd html 4.0 transitional//en"`
- `"-//W3C//DTD HTML 4.0 transitional//EN"`

- HTML 4.0 Frameset

- `"-//W3C//DTD HTML 4.0 Frameset//EN" (typical usage)`
- `"-//w3c//dtd html 4.0 frameset//en"`
- `"-//W3C//DTD HTML 4.0 frameset//EN"`

- HTML 3.2

- `"-//W3C//DTD HTML 3.2 Final//EN" (typical usage)`
- `"-//W3C//DTD HTML 3.2 Draft//EN" (typical usage)`
- `"-//W3C//DTD HTML 3.2//EN" (typical usage)`
- `"-//W3C//DTD HTML 3.2 final//EN"`
- `"-//w3c//dtd html 3.2 final//en"`
- `"-//W3C//DTD HTML 3.2 draft//EN"`
- `"-//w3c//dtd html 3.2 draft//en"`
- `"-//w3c//dtd html 3.2//en"`

- HTML (2.0)

- "-//IETF//DTD HTML//EN" (typical usage)
- "-//IETF//DTD HTML 2.0//EN" (typical usage)
- "-//IETF//DTD HTML Level 2//EN" (typical usage)
- "-//IETF//DTD HTML 2.0 Level 2//EN" (typical usage)
- "-//IETF//DTD HTML Level 1//EN" (typical usage)
- "-//IETF//DTD HTML 2.0 Level 1//EN" (typical usage)
- "-//IETF//DTD HTML Strict//EN" (typical usage)
- "-//IETF//DTD HTML 2.0 Strict//EN" (typical usage)
- "-//IETF//DTD HTML Strict Level 2//EN" (typical usage)
- "-//IETF//DTD HTML 2.0 Strict Level 2//EN" (typical usage)
- "-//IETF//DTD HTML Strict Level 1//EN" (typical usage)
- "-//ietf//dtd html//en"
- "-//ietf//dtd html 2.0//en"
- "-//ietf//dtd html level 2//en"
- "-//ietf//dtd html 2.0 level 2//en"
- "-//ietf//dtd html level 1//en"
- "-//ietf//dtd html 2.0 level 1//en"

- "-//ietf//dtd html strict//en"
- "-//ietf//dtd html 2.0 strict//en"
- "-//ietf//dtd html strict level 2//en"
- "-//ietf//dtd html 2.0 strict level 2//en"
- "-//ietf//dtd html strict level 1//en"
- "-//ietf//dtd html 2.0 strict level 1//en"

- XHTML

- "-//W3C//DTD XHTML 1.0 Strict//EN" (typical usage)
- "-//W3C//DTD XHTML 1.0 Transitional//EN" (typical usage)
- "-//W3C//DTD XHTML 1.0 Frameset//EN" (typical usage)
- "-//W3C//DTD XHTML 1.1//EN" (typical usage)



## **Appendix C**

### **Results of surveys conducted on the web samples of Irish, UK, French and German web sites (May 2003)**

#### **C.1 Web content mirroring process results**

Table C.1: Results of the web content sampling process

	IE	UK	FR	DE	Overall
Data amount retrieved	29 MB	552 MB	167 MB	377 MB	1.1 GB
Web pages considered for mirroring	3,319	67,598	22,319	58,278	151,514
Web pages correctly retrieved (size>0 and no retrieval errors)	2,817 (84.9%)	59,248 (87.6%)	19,727 (88.4%)	52,825 (90.6%)	134,617(88.8%)
Web pages in web sites qualified for conformance investigations	2,288 (68.9%)	45,857 (67.8%)	16,312 (73.1%)	38,062 (65.3%)	102,519(67.7%)
Web sites qualified for conformance investigations	123 (45.2%)	2,380 (41.7%)	747 (48.3%)	1,636 (38.5%)	4,886 (41.5%)

Table C.2: Details regarding the web sites that didn't qualify for investigations

	IE	UK	FR	DE	Overall
Web sites not qualified for investigations	149	3,322	798	2,615	6,884
No data retrieved	9 (6%)	270 (8.1%)	106 (13.3%)	147 (5.6%)	532 (7.7%)
Only the main page retrieved (size>0)	91 (61.1%)	1,669 (50.2%)	328 (41.1%)	1,159 (44.3%)	3,247 (47.2%)
Less than 3 pages (2) and at least 100 KB retrieved	1 (0.7%)	4 (0.1%)	4 (0.5%)	1 (0%)	10 (0.1%)
Less than 100 KB and at least 3 pages retrieved	46 (30.9%)	1,211 (36.5%)	301 (37.7%)	1,177 (45%)	2,735 (39.7%)
Less than 3 pages (2) and less than 100 KB (but more than 0) retrieved	2 (1.3%)	168 (5.1%)	59 (7.4%)	130 (5.0%)	359 (5.2%)

## C.2 WCAG 1.0 conformance investigation results

Table C.3: Details regarding Bobby executions

	IE		UK		FR		DE		Overall
Web sites considered by Bobby	123		2,380		747		1,636		4,886
Bobby abnormally terminated	3	(2.4%)	137	(5.8%)	63	(8.4%)	101	(6.2%)	304 (6.2%)
Bobby "locked up"	6	(4.9%)	92	(3.9%)	45	(6%)	90	(5.5%)	233 (4.8%)
Bobby completed successfully	114	(92.7%)	2,151	(90.4%)	639	(85.5%)	1,444	(88.3%)	4,348 (89%)

Table C.4: Bobby Priority 1 diagnostics triggered during the investigation

ID		IE		UK		FR		DE		Overall
g9	Provide alternative text for all images	106	(93%)	1,989	(92.5%)	625	(97.8%)	1,336	(92.5%)	4,056 (93.3%)
g39	Give each frame a title	25	(21.9%)	579	(26.9%)	263	(41.2%)	735	(50.9%)	1,602 (36.8%)
g38	Each FRAME must reference an HTML file	24	(21.1%)	548	(25.5%)	251	(39.3%)	726	(50.3%)	1,549 (35.6%)
g240	Provide alternative text for all image map hot-spots	25	(21.9%)	429	(19.9%)	241	(37.7%)	265	(18.4%)	960 (22.1%)
g10	Provide alternative text for all image-type buttons in forms	9	(7.9%)	183	(8.5%)	82	(12.8%)	126	(8.7%)	400 (9.2%)
g21	Provide alternative text for each APPLET	10	(8.8%)	158	(7.3%)	45	(7%)	110	(7.6%)	323 (7.4%)
g20	Provide alternative content for each OBJECT	0	(0%)	5	(0.2%)	3	(0.5%)	3	(0.2%)	11 (0.3%)

Figure C.1: Bobby Priority 1 diagnostics

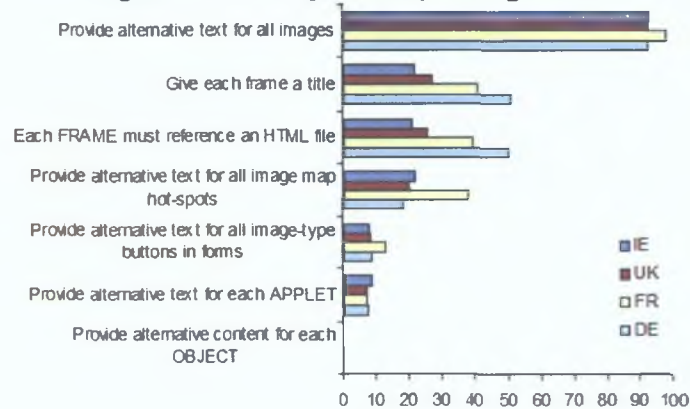


Table C.5: Density of Bobby Priority 1 diagnostics

	IE	UK	FR	DE	Overall
Web sites with Bobby completed successfully	114	2,151	639	1,444	4,348
Web sites that triggered 0 distinct diagnostics	7 (6.1%)	119 (5.5%)	9 (1.4%)	66 (4.6%)	201 (4.6%)
Web sites that triggered 1 distinct diagnostic	55 (48.2%)	1,021 (47.5%)	199 (31.1%)	461 (31.9%)	1,736 (39.9%)
Web sites that triggered 2 distinct diagnostic	25 (21.9%)	415 (19.3%)	155 (24.3%)	200 (13.9%)	795 (18.3%)
Web sites that triggered 3 distinct diagnostics	16 (14%)	377 (17.5%)	135 (21.1%)	463 (32.1%)	991 (22.8%)
Web sites that triggered 4 distinct diagnostics	9 (7.9%)	186 (8.6%)	110 (17.2%)	220 (15.2%)	525 (12.1%)
Web sites that triggered 5 distinct diagnostics	2 (1.8%)	33 (1.5%)	30 (4.7%)	33 (2.3%)	98 (2.3%)
Web sites that triggered 6 distinct diagnostics	0 (0%)	0 (0%)	1 (0.2%)	1 (0.1%)	2 (0%)

Figure C.2: Density of Bobby Priority 1 diagnostics

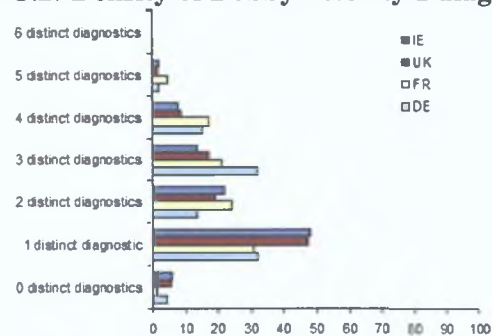


Figure C.3: Bobby Priority 2 diagnostics

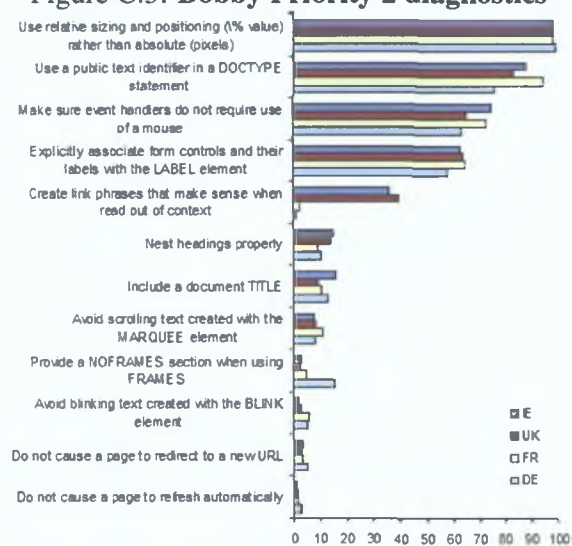


Figure C.4: Density of Bobby Priority 2 diagnostics

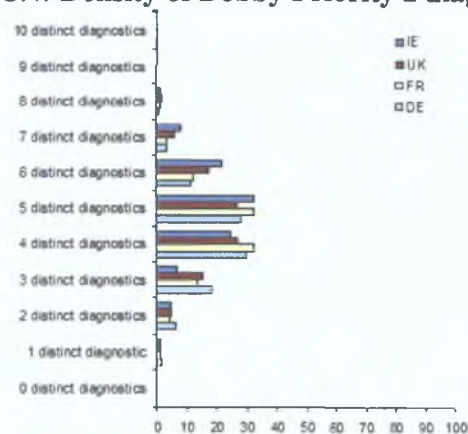


Table C.6: Bobby Priority 2 diagnostics triggered during the investigation

ID		IE	UK	FR	DE	Overall
g104	Use relative sizing and positioning (% value) rather than absolute (pixels)	112 (98.2%)	2,113 (98.2%)	627 (98.1%)	1,429 (99.0%)	4,281 (98.5%)
g271	Use a public text identifier in a DOCTYPE statement	100 (87.7%)	1,775 (82.5%)	602 (94.2%)	1,093 (75.7%)	3,570 (82.1%)
g269	Make sure event handlers do not require use of a mouse	85 (74.6%)	1,404 (65.3%)	464 (72.6%)	915 (63.4%)	2,868 (66.0%)
g41	Explicitly associate form controls and their labels with the LABEL element	71 (62.3%)	1,368 (63.6%)	412 (64.5%)	836 (57.9%)	2,687 (61.8%)
g34	Create link phrases that make sense when read out of context	41 (36.0%)	840 (39.1%)	15 (2.3%)	18 (1.2%)	914 (21.0%)
g2	Nest headings properly	17 (14.9%)	298 (13.9%)	56 (8.8%)	150 (10.4%)	521 (12.0%)
g273	Include a document TITLE	18 (15.8%)	191 (8.9%)	68 (10.6%)	182 (12.6%)	459 (10.6%)
g5	Avoid scrolling text created with the MARQUEE element	9 (7.9%)	178 (8.3%)	69 (10.8%)	119 (8.2%)	375 (8.6%)
g37	Provide a NOFRAMES section when using FRAMES	3 (2.6%)	46 (2.1%)	30 (4.7%)	219 (15.2%)	298 (6.9%)
g41	Avoid blinking text created with the BLINK element	2 (1.8%)	55 (2.6%)	37 (5.8%)	80 (5.5%)	174 (4.0%)
g254	Do not cause a page to redirect to a new URL	4 (3.5%)	62 (2.9%)	19 (3%)	78 (5.4%)	163 (3.7%)
g33	Do not cause a page to refresh automatically	1 (0.9%)	35 (1.6%)	9 (1.4%)	37 (2.6%)	82 (1.9%)

Table C.7: Density of Bobby Priority 2 diagnostics

	IE	UK	FR	DE	Overall
Web sites with Bobby completed successfully	114	2,151	639	1,444	4,348
Web sites that triggered 0 distinct diagnostics	0 (0%)	4 (0.2%)	0 (0%)	0 (0%)	4 (0.1%)
Web sites that triggered 1 distinct diagnostic	1 (0.9%)	22 (1.0%)	7 (1.1%)	25 (1.7%)	55 (1.3%)
Web sites that triggered 2 distinct diagnostics	5 (4.4%)	100 (4.6%)	26 (4.1%)	92 (6.4%)	223 (5.1%)
Web sites that triggered 3 distinct diagnostics	8 (7%)	329 (15.3%)	87 (13.6%)	265 (18.4%)	689 (15.8%)
Web sites that triggered 4 distinct diagnostics	28 (24.6%)	576 (26.8%)	207 (32.4%)	431 (29.8%)	1,242 (28.6%)
Web sites that triggered 5 distinct diagnostics	37 (32.5%)	577 (26.8%)	207 (32.4%)	406 (28.1%)	1,227 (28.2%)
Web sites that triggered 6 distinct diagnostics	25 (21.9%)	374 (17.4%)	80 (12.5%)	167 (11.6%)	646 (14.9%)
Web sites that triggered 7 distinct diagnostics	9 (7.9%)	125 (5.8%)	19 (3%)	47 (3.3%)	200 (4.6%)
Web sites that triggered 8 distinct diagnostics	1 (0.9%)	34 (1.6%)	6 (0.9%)	9 (0.6%)	50 (1.1%)
Web sites that triggered 9 distinct diagnostics	0 (0%)	9 (0.4%)	0 (0%)	2 (0.1%)	11 (0.3%)
Web sites that triggered 10 distinct diagnostics	0 (0%)	1 (0%)	0 (0%)	0 (0%)	1 (0%)

### C.3 HTML technical standards conformance investigation results

Table C.8: Details regarding OpenSP executions

	IE	UK	FR	DE	Overall
Web sites processed by OpenSP	123	2,380	747	1,636	4,886
Web sites where all the web pages had usable document type information	2 (1.6%)	35 (1.5%)	1 (0.1%)	52 (3.2%)	90 (1.8%)
Web sites considered for HTML defects analysis	36 (29.3%)	663 (27.9%)	140 (18.7%)	603 (36.9%)	1,442 (29.5%)

Table C.9: Document Type Declaration in web pages considered by OpenSP

	IE	UK	FR	DE	Overall
Web pages processed by OpenSP	2,288	45,857	16,312	38,062	102,519
No document type information	1,732 (75.7%)	34,564 (75.4%)	13,837 (84.8%)	24,258 (63.7%)	74,391 (72.6%)
Incorrect document type information	42 (1.8%)	965 (2.1%)	427 (2.6%)	2,692 (7.1%)	4,126 (4%)
Usable document type information	465 (20.3%)	9,562 (20.9%)	1,788 (11%)	10,681 (28.1%)	22,496 (21.9%)
Considered for HTML defects analysis (in web sites with at least 3 web pages and 100 KB of data with usable document type information)	454 (19.8%)	9,291 (20.3%)	1,672 (10.3%)	10,431 (27.4%)	21,848 (21.3%)



Table C.10: The 10 most common OpenSP diagnostics triggered in the investigation

ID		IE		UK		FR		DE		Overall	
108	Undefined attribute	33	(91.7%)	600	(90.5%)	116	(82.9%)	549	(91%)	1,298	(90%)
64	Element not allowed by document type	29	(80.6%)	509	(76.8%)	101	(72.1%)	486	(80.6%)	1,125	(78%)
127	Required attribute not specified	19	(52.8%)	496	(74.8%)	102	(72.9%)	463	(76.8%)	1,080	(74.9%)
79	End tag for not opened element	27	(75%)	487	(73.5%)	84	(60%)	416	(69%)	1,014	(70.3%)
68	Missing required end tag (element DTD)	20	(55.6%)	351	(52.9%)	65	(46.4%)	327	(54.2%)	763	(52.9%)
25	General entity not defined and no default entity	17	(47.2%)	326	(49.2%)	57	(40.7%)	269	(44.6%)	669	(46.4%)
139	Non SGML character number	20	(55.6%)	270	(40.7%)	66	(47.1%)	268	(44.4%)	624	(43.3%)
73	End tag for element not finished	11	(30.6%)	254	(38.3%)	52	(37.1%)	276	(45.8%)	593	(41.1%)
131	Attribute value not allowed	10	(27.8%)	261	(39.4%)	59	(42.1%)	217	(36%)	547	(37.9%)
82	Attribute value must be literal	16	(44.4%)	251	(37.9%)	54	(38.6%)	212	(35.2%)	533	(37%)

Figure C.5: The 10 most common OpenSP diagnostics

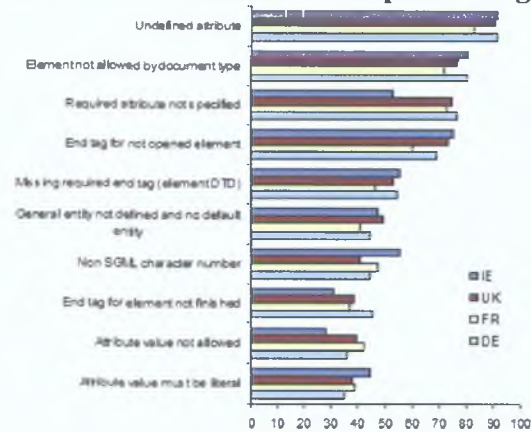


Table C.11: **Density of OpenSP diagnostics**

	IE	UK	FR	DE	Overall
Web sites considered for HTML defects analysis	36	663	140	603	1,442
Web sites that triggered 0 distinct diagnostics	1 (2.8%)	29 (4.4%)	16 (11.4%)	29 (4.8%)	75 (5.2%)
Web sites that triggered 1 distinct diagnostic	1 (2.8%)	8 (1.2%)	2 (1.4%)	9 (1.5%)	20 (1.4%)
Web sites that triggered 2 distinct diagnostics	2 (5.6%)	20 (3%)	3 (2.1%)	6 (1%)	31 (2.1%)
Web sites that triggered 3 distinct diagnostics	1 (2.8%)	19 (2.9%)	3 (2.1%)	19 (3.2%)	42 (2.9%)
Web sites that triggered 4 distinct diagnostics	2 (5.6%)	37 (5.6%)	11 (7.9%)	21 (3.5%)	71 (4.9%)
Web sites that triggered 5 distinct diagnostics	1 (2.8%)	46 (6.9%)	6 (4.3%)	29 (4.8%)	82 (5.7%)
Web sites that triggered 6 distinct diagnostics	1 (2.8%)	40 (6%)	10 (7.1%)	44 (7.3%)	95 (6.6%)
Web sites that triggered 7 distinct diagnostics	3 (8.3%)	58 (8.7%)	13 (9.3%)	56 (9.3%)	130 (9%)
Web sites that triggered 8 distinct diagnostics	3 (8.3%)	51 (7.7%)	9 (6.4%)	63 (10.4%)	126 (8.7%)
Web sites that triggered 9 distinct diagnostics	1 (2.8%)	56 (8.4%)	7 (5%)	52 (8.6%)	116 (8%)
Web sites that triggered 10 distinct diagnostics	5 (13.9%)	54 (8.1%)	11 (7.9%)	49 (8.1%)	119 (8.3%)
Web sites that triggered 11 distinct diagnostics	5 (13.9%)	60 (9%)	10 (7.1%)	48 (8%)	123 (8.5%)
Web sites that triggered 12 distinct diagnostics	4 (11.1%)	52 (7.8%)	11 (7.9%)	39 (6.5%)	106 (7.4%)
Web sites that triggered 13 distinct diagnostics	2 (5.6%)	37 (5.6%)	10 (7.1%)	43 (7.1%)	92 (6.4%)
Web sites that triggered 14 distinct diagnostics	2 (5.6%)	38 (5.7%)	3 (2.1%)	20 (3.3%)	63 (4.4%)
Web sites that triggered 15 distinct diagnostics	0 (0%)	19 (2.9%)	3 (2.1%)	22 (3.6%)	44 (3.1%)
Web sites that triggered 16 distinct diagnostics	1 (2.8%)	20 (3%)	6 (4.3%)	22 (3.6%)	49 (3.4%)

Table C.11: **Density of OpenSP diagnostics**

	IE		UK		FR		DE		Overall	
Web sites that triggered 17 distinct diagnostics	0	(0%)	8	(1.2%)	3	(2.1%)	7	(1.2%)	18	(1.2%)
Web sites that triggered 18 distinct diagnostics	0	(0%)	7	(1.1%)	2	(1.4%)	10	(1.7%)	19	(1.3%)
Web sites that triggered 19 distinct diagnostics	0	(0%)	2	(0.3%)	0	(0%)	8	(1.3%)	10	(0.7%)
Web sites that triggered 20 distinct diagnostics	0	(0%)	1	(0.2%)	1	(0.7%)	5	(0.8%)	7	(0.5%)
Web sites that triggered 21 distinct diagnostics	0	(0%)	0	(0%)	0	(0%)	1	(0.2%)	1	(0.1%)
Web sites that triggered 22 distinct diagnostics	1	(2.8%)	1	(0.2%)	0	(0%)	0	(0%)	2	(0.1%)
Web sites that triggered 23 distinct diagnostics	0	(0%)	0	(0%)	0	(0%)	1	(0.2%)	1	(0.1%)

Figure C.6: **Density of OpenSP diagnostics**



## **Appendix D**

### **Results of surveys conducted on the web samples of Irish, UK, French and German web sites (December 2003)**

#### **D.1 Web content mirroring process results**

Table D.1: Results of the web content sampling process

	IE	UK	FR	DE	Overall
Data amount retrieved	26 MB	527 MB	162 MB	378 MB	1.1 GB
Web pages considered for mirroring	3,043	62,491	20,406	57,598	143,538
Web pages correctly retrieved (size>0 and no retrieval errors)	2,541 (83.5%)	54,135 (86.6%)	17,956 (88%)	51,473 (89.4%)	126,105(87.9%)
Web pages in web sites qualified for conformance investigations	2,064 (67.8%)	42,189 (67.5%)	14,874 (72.9%)	37,974 (65.9%)	97,101 (67.6%)
Web sites qualified for conformance investigations	111 (40.8%)	2,269 (39.8%)	722 (46.7%)	1,649 (38.8%)	4,751 (40.4%)

Table D.2: Details regarding the web sites that didn't qualify for investigations

	IE	UK	FR	DE	Overall
Web sites not qualified for investigations	161	3,434	823	2,602	7,020
No data retrieved	15 (9.3%)	417 (12.1%)	124 (15.1%)	178 (6.8%)	734 (10.5%)
Only the main page retrieved (size>0)	102 (63.4%)	1,770 (51.5%)	358 (43.5%)	1,209 (46.5%)	3,439 (49%)
Less than 3 pages (2) and at least 100 KB retrieved	1 (0.6%)	3 (0.1%)	3 (0.4%)	4 (0.2%)	11 (0.2%)
Less than 100 KB and at least 3 pages retrieved	40 (24.8%)	1,084 (31.6%)	285 (34.6%)	1,082 (41.6%)	2,491 (35.5%)
Less than 3 pages (2) and less than 100 KB (but more than 0) retrieved	3 (1.9%)	158 (4.6%)	53 (6.4%)	128 (4.9%)	342 (4.9%)

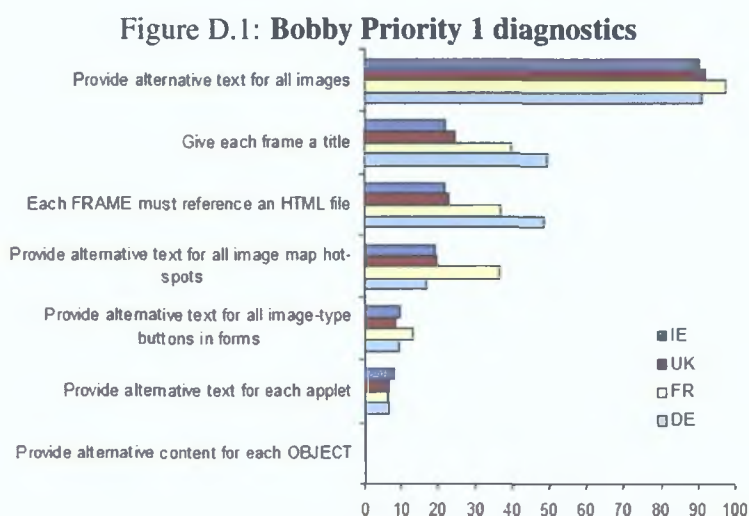
## D.2 WCAG 1.0 conformance investigation results

Table D.3: Details regarding Bobby executions

	IE	UK	FR	DE	Overall
Web sites considered by Bobby	111	2,269	722	1,649	4,751
Bobby abnormally terminated	3 (2.7%)	133 (5.9%)	51 (7.1%)	102 (6.2%)	289 (6.1%)
Bobby "locked up"	4 (3.6%)	76 (3.3%)	28 (3.9%)	75 (4.5%)	183 (3.9%)
Bobby completed successfully	104 (93.7%)	2,059 (90.7%)	643 (89.1%)	1,471 (89.2%)	4,277 (90%)

Table D.4: Bobby Priority 1 diagnostics triggered during the investigation

ID		IE	UK	FR	DE	Overall
g9	Provide alternative text for all images	94 (90.4%)	1,896 (92.1%)	627 (97.5%)	1,343 (91.3%)	3,960 (92.6%)
g39	Give each frame a title	23 (22.1%)	511 (24.8%)	257 (40%)	730 (49.6%)	1,521 (35.6%)
g38	Each FRAME must reference an HTML file	23 (22.1%)	477 (23.2%)	238 (37%)	715 (48.6%)	1,453 (34%)
g240	Provide alternative text for all image map hot-spots	20 (19.2%)	401 (19.5%)	235 (36.5%)	243 (16.5%)	899 (21%)
g10	Provide alternative text for all image-type buttons in forms	10 (9.6%)	170 (8.3%)	85 (13.2%)	135 (9.2%)	400 (9.4%)
g21	Provide alternative text for each APPLET	8 (7.7%)	134 (6.5%)	38 (5.9%)	92 (6.3%)	272 (6.4%)
g20	Provide alternative content for each OBJECT	0 (0%)	3 (0.1%)	3 (0.5%)	3 (0.2%)	9 (0.2%)



**Table D.5: Density of Bobby Priority 1 diagnostics**

	IE	UK	FR	DE	Overall
Web sites with Bobby completed successfully	104	2,059	643	1,471	4,277
Web sites that triggered 0 distinct diagnostics	7 (6.7%)	123 (6%)	10 (1.6%)	69 (4.7%)	209 (4.9%)
Web sites that triggered 1 distinct diagnostic	50 (48.1%)	1,008 (49%)	204 (31.7%)	496 (33.7%)	1,758 (41.1%)
Web sites that triggered 2 distinct diagnostic	25 (24%)	400 (19.4%)	166 (25.8%)	207 (14.1%)	798 (18.7%)
Web sites that triggered 3 distinct diagnostics	12 (11.5%)	352 (17.1%)	131 (20.4%)	474 (32.2%)	969 (22.7%)
Web sites that triggered 4 distinct diagnostics	8 (7.7%)	152 (7.4%)	107 (16.6%)	197 (13.4%)	464 (10.8%)
Web sites that triggered 5 distinct diagnostics	2 (1.9%)	24 (1.2%)	24 (3.7%)	27 (1.8%)	77 (1.8%)
Web sites that triggered 6 distinct diagnostics	0 (0%)	0 (0%)	1 (0.2%)	1 (0.1%)	2 (0%)

Figure D.2: Density of Bobby Priority 1 diagnostics

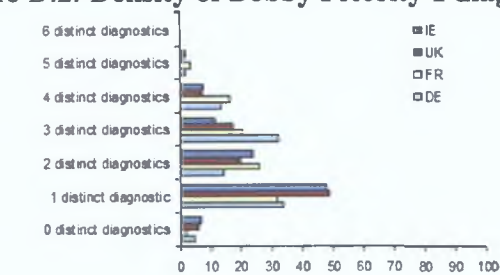


Figure D.3: Bobby Priority 2 diagnostics

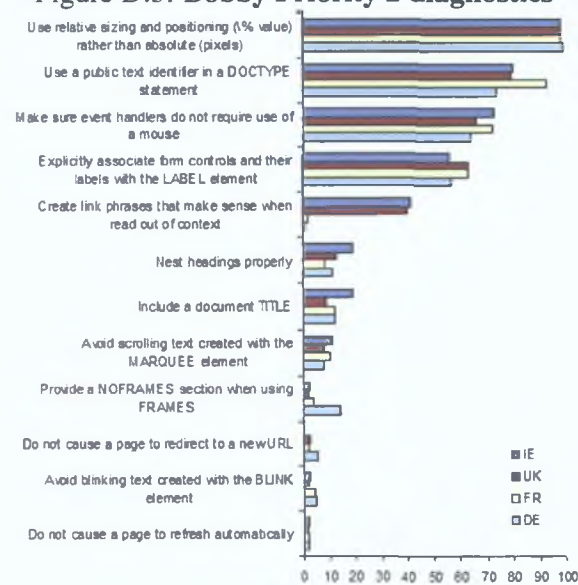


Figure D.4: Density of Bobby Priority 2 diagnostics

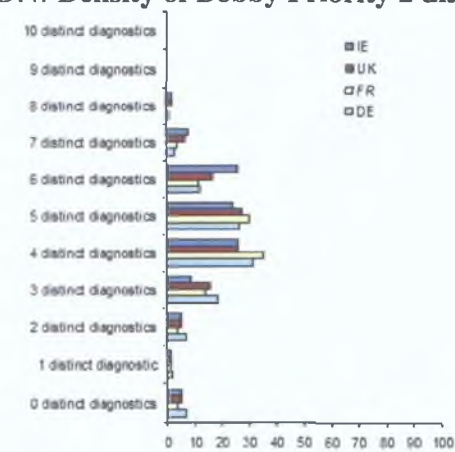




Table D.6: **Bobby Priority 2 diagnostics triggered during the investigation**

ID		IE		UK		FR		DE		Overall
g104	Use relative sizing and positioning (% value) rather than absolute (pixels)	102	(98.1%)	2,020	(98.1%)	630	(98%)	1,454	(98.8%)	4,206 (98.3%)
g271	Use a public text identifier in a DOCTYPE statement	83	(79.8%)	1,631	(79.2%)	596	(92.7%)	1,085	(73.8%)	3,395 (79.4%)
g269	Make sure event handlers do not require use of a mouse	76	(73.1%)	1,356	(65.9%)	464	(72.2%)	948	(64.4%)	2,844 (66.5%)
g41	Explicitly associate form controls and their labels with the LABEL element	58	(55.8%)	1,303	(63.3%)	407	(63.3%)	836	(56.8%)	2,604 (60.9%)
g34	Create link phrases that make sense when read out of context	43	(41.3%)	822	(39.9%)	15	(2.3%)	19	(1.3%)	899 (21%)
g2	Nest headings properly	20	(19.2%)	263	(12.8%)	55	(8.6%)	167	(11.4%)	505 (11.8%)
g273	Include a document TITLE	20	(19.2%)	185	(9%)	77	(12%)	177	(12%)	459 (10.7%)
g5	Avoid scrolling text created with the MARQUEE element	12	(11.5%)	158	(7.7%)	65	(10.1%)	114	(7.7%)	349 (8.2%)
g37	Provide a NOFRAMES section when using FRAMES	3	(2.9%)	48	(2.3%)	25	(3.9%)	207	(14.1%)	283 (6.6%)
g41	Avoid blinking text created with the BLINK element	3	(2.9%)	43	(2.1%)	29	(4.5%)	73	(5%)	148 (3.5%)
g254	Do not cause a page to redirect to a new URL	0	(0%)	53	(2.6%)	16	(2.5%)	79	(5.4%)	148 (3.5%)
g33	Do not cause a page to refresh automatically	2	(1.9%)	29	(1.4%)	13	(2%)	32	(2.2%)	76 (1.8%)

Table D.7: Density of Bobby Priority 2 diagnostics

	IE	UK	FR	DE	Overall
Web sites for which Bobby completed successfully	104	2,059	643	1,471	4,277
Web sites that triggered 0 distinct diagnostics	0 (0%)	4 (0.2%)	1 (0.2%)	0 (0%)	5 (0.1%)
Web sites that triggered 1 distinct diagnostic	1 (1%)	24 (1.2%)	8 (1.2%)	25 (1.7%)	58 (1.4%)
Web sites that triggered 2 distinct diagnostics	5 (4.8%)	99 (4.8%)	23 (3.6%)	99 (6.7%)	226 (5.3%)
Web sites that triggered 3 distinct diagnostics	9 (8.7%)	328 (15.9%)	89 (13.8%)	273 (18.6%)	699 (16.3%)
Web sites that triggered 4 distinct diagnostics	27 (26%)	535 (26%)	226 (35.1%)	459 (31.2%)	1,247 (29.2%)
Web sites that triggered 5 distinct diagnostics	25 (24%)	562 (27.3%)	194 (30.2%)	387 (26.3%)	1,168 (27.3%)
Web sites that triggered 6 distinct diagnostics	27 (26%)	339 (16.5%)	74 (11.5%)	176 (12%)	616 (14.4%)
Web sites that triggered 7 distinct diagnostics	8 (7.7%)	134 (6.5%)	25 (3.9%)	41 (2.8%)	208 (4.9%)
Web sites that triggered 8 distinct diagnostics	2 (1.9%)	28 (1.4%)	3 (0.5%)	10 (0.7%)	43 (1%)
Web sites that triggered 9 distinct diagnostics	0 (0%)	5 (0.2%)	0 (0%)	1 (0.1%)	6 (0.1%)
Web sites that triggered 10 distinct diagnostics	0 (0%)	1 (0%)	0 (0%)	0 (0%)	1 (0%)

### D.3 HTML technical standards conformance investigation results

Table D.8: Details regarding OpenSP executions

	IE	UK	FR	DE	Overall
Web sites processed by OpenSP	111	2,269	722	1,649	4,751
Web sites where all the web pages had usable document type information	2 (1.8%)	50 (2.2%)	2 (0.3%)	52 (3.2%)	106 (2.2%)
Web sites considered for HTML defects analysis	39 (35.1%)	720 (31.7%)	142 (19.7%)	647 (39.2%)	1,548 (32.6%)

Table D.9: Document Type Declaration in web pages considered by OpenSP

	IE	UK	FR	DE	Overall
Web pages processed by OpenSP	2,064	42,189	14,874	37,974	97,101
No document type information	1,435 (69.5%)	30,528 (72.4%)	12,578 (84.6%)	23,422 (61.7%)	67,963 (70%)
Incorrect document type information	78 (3.8%)	873 (2.1%)	457 (3.1%)	2,411 (6.3%)	3,819 (3.9%)
Usable document type information	509 (24.7%)	10,192 (24.2%)	1,758 (11.8%)	11,726 (30.9%)	24,185 (24.9%)
Considered for HTML defects analysis (in web sites with at least 3 web pages and 100 KB of data with usable document type information)	500 (24.2%)	9,916 (23.5%)	1,646 (11.1%)	11,474 (30.2%)	23,536 (24.2%)

Table D.10: The 10 most common OpenSP diagnostics triggered in the investigation

ID		IE		UK		FR		DE		Overall
108	Undefined attribute	36	(92.3%)	631	(87.6%)	117	(82.4%)	588	(90.9%)	1,372 (88.6%)
127	Required attribute not specified	28	(71.8%)	560	(77.8%)	104	(73.2%)	515	(79.6%)	1,207 (78%)
64	Element not allowed by document type	31	(79.5%)	520	(72.2%)	99	(69.7%)	511	(79%)	1,161 (75%)
79	End tag for not opened element	28	(71.8%)	506	(70.3%)	86	(60.6%)	446	(68.9%)	1,066 (68.9%)
68	Missing required end tag (element DTD)	22	(56.4%)	342	(47.5%)	53	(37.3%)	344	(53.2%)	761 (49.2%)
25	General entity not defined and no default entity	20	(51.3%)	349	(48.5%)	63	(44.4%)	287	(44.4%)	719 (46.4%)
139	Non SGML character number	24	(61.5%)	285	(39.6%)	64	(45.1%)	313	(48.4%)	686 (44.3%)
73	End tag for element not finished	16	(41%)	270	(37.5%)	52	(36.6%)	294	(45.4%)	632 (40.8%)
131	Attribute value not allowed	15	(38.5%)	282	(39.2%)	59	(41.5%)	230	(35.5%)	586 (37.9%)
82	Attribute value must be literal	18	(46.2%)	261	(36.3%)	51	(35.9%)	222	(34.3%)	552 (35.7%)

Figure D.5: The 10 most common OpenSP diagnostics

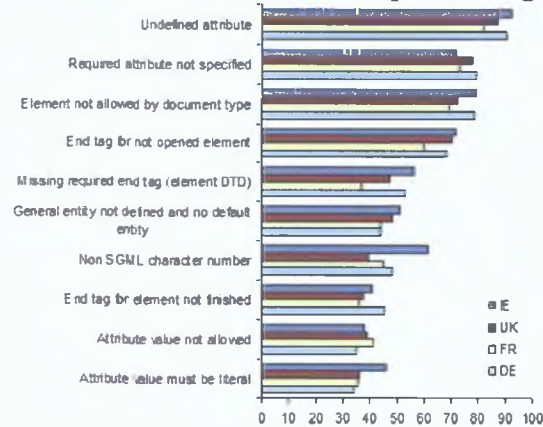


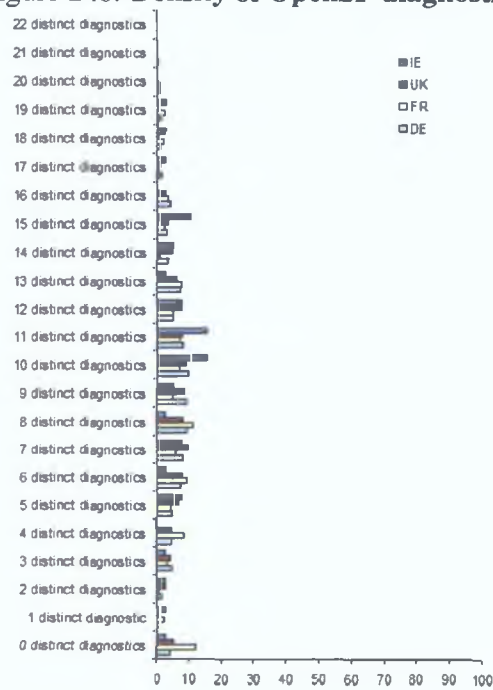
Table D.11: **Density of OpenSP diagnostics**

	IE		UK		FR		DE		Overall
Web sites considered for further analysis	39		720		142		647		1,548
Web sites that triggered 0 distinct diagnostics	1	(2.6%)	37	(5.1%)	17	(12%)	26	(4%)	81 (5.2%)
Web sites that triggered 1 distinct diagnostic	1	(2.6%)	8	(1.1%)	3	(2.1%)	6	(0.9%)	18 (1.2%)
Web sites that triggered 2 distinct diagnostics	1	(2.6%)	17	(2.4%)	1	(0.7%)	10	(1.5%)	29 (1.9%)
Web sites that triggered 3 distinct diagnostics	1	(2.6%)	29	(4%)	4	(2.8%)	30	(4.6%)	64 (4.1%)
Web sites that triggered 4 distinct diagnostics	0	(0%)	32	(4.4%)	12	(8.5%)	28	(4.3%)	72 (4.7%)
Web sites that triggered 5 distinct diagnostics	3	(7.7%)	48	(6.7%)	6	(4.2%)	29	(4.5%)	86 (5.6%)
Web sites that triggered 6 distinct diagnostics	1	(2.6%)	55	(7.6%)	13	(9.2%)	47	(7.3%)	116 (7.5%)
Web sites that triggered 7 distinct diagnostics	3	(7.7%)	67	(9.3%)	8	(5.6%)	53	(8.2%)	131 (8.5%)
Web sites that triggered 8 distinct diagnostics	1	(2.6%)	59	(8.2%)	16	(11.3%)	60	(9.3%)	136 (8.8%)
Web sites that triggered 9 distinct diagnostics	2	(5.1%)	60	(8.3%)	7	(4.9%)	59	(9.1%)	128 (8.3%)
Web sites that triggered 10 distinct diagnostics	6	(15.4%)	63	(8.8%)	10	(7%)	63	(9.7%)	142 (9.2%)
Web sites that triggered 11 distinct diagnostics	6	(15.4%)	55	(7.6%)	10	(7%)	53	(8.2%)	124 (8%)
Web sites that triggered 12 distinct diagnostics	3	(7.7%)	54	(7.5%)	7	(4.9%)	33	(5.1%)	97 (6.3%)
Web sites that triggered 13 distinct diagnostics	1	(2.6%)	44	(6.1%)	11	(7.7%)	46	(7.1%)	102 (6.6%)
Web sites that triggered 14 distinct diagnostics	2	(5.1%)	32	(4.4%)	1	(0.7%)	22	(3.4%)	57 (3.7%)
Web sites that triggered 15 distinct diagnostics	4	(10.3%)	24	(3.3%)	3	(2.1%)	20	(3.1%)	51 (3.3%)
Web sites that triggered 16 distinct diagnostics	0	(0%)	17	(2.4%)	5	(3.5%)	26	(4%)	48 (3.1%)

Table D.11: Density of OpenSP diagnostics

	IE		UK		FR		DE		Overall	
Web sites that triggered 17 distinct diagnostics	1	(2.6%)	8	(1.1%)	1	(0.7%)	11	(1.7%)	21	(1.4%)
Web sites that triggered 18 distinct diagnostics	1	(2.6%)	4	(0.6%)	3	(2.1%)	6	(0.9%)	14	(0.9%)
Web sites that triggered 19 distinct diagnostics	1	(2.6%)	5	(0.7%)	3	(2.1%)	8	(1.2%)	17	(1.1%)
Web sites that triggered 20 distinct diagnostics	0	(0%)	2	(0.3%)	1	(0.7%)	5	(0.8%)	8	(0.5%)
Web sites that triggered 21 distinct diagnostics	0	(0%)	0	(0%)	0	(0%)	5	(0.8%)	5	(0.3%)
Web sites that triggered 22 distinct diagnostics	0	(0%)	0	(0%)	0	(0%)	1	(0.2%)	1	(0.1%)

Figure D.6: Density of OpenSP diagnostics



## **Appendix E**

### **Results of surveys conducted on the web samples of Irish, UK, French and German web sites (May 2004)**

#### **E.1 Web content mirroring process results**

Table E.1: Results of the web content sampling process

	IE	UK	FR	DE	Overall
Data amount retrieved	26 MB	519 MB	157 MB	380 MB	1.1 GB
Web pages considered for mirroring	2,901	60,440	19,148	56,641	139,130
Web pages correctly retrieved (size>0 and no retrieval errors)	2,400 (82.7%)	52,260 (86.5%)	16,388 (85.6%)	50,461 (89.1%)	121,509(87.3%)
Web pages in web sites qualified for conformance investigations	1,966 (67.8%)	40,769 (67.5%)	13,461 (70.3%)	37,245 (65.8%)	93,441 (67.2%)
Web sites qualified for conformance investigations	110 (40.4%)	2,243 (39.3%)	698 (45.2%)	1,646 (38.7%)	4,697 (39.9%)

Table E.2: Details regarding the web sites that didn't qualify for investigations

	IE	UK	FR	DE	Overall
Web sites not qualified for investigations	162	3,459	847	2,604	7,072
No data retrieved	21 (13%)	534 (15.4%)	178 (21%)	205 (7.9%)	938 (13.3%)
Only the main page retrieved (size>0)	103 (63.6%)	1,749 (50.6%)	361 (42.6%)	1,226 (47.1%)	3,439 (48.6%)
Less than 3 pages (2) and at least 100 KB retrieved	0 (0%)	5 (0.1%)	1 (0.1%)	4 (0.2%)	10 (0.1%)
Less than 100 KB and at least 3 pages retrieved	34 (21%)	1,004 (29%)	258 (30.5%)	1,054 (40.5%)	2,350 (33.2%)
Less than 3 pages (2) and less than 100 KB (but more than 0) retrieved	4 (2.5%)	167 (4.8%)	49 (5.8%)	115 (4.4%)	335 (4.7%)



## E.2 WCAG 1.0 conformance investigation results

Table E.3: Details regarding Bobby executions

	IE		UK		FR		DE		Overall
Web sites considered by Bobby	110		2,243		698		1,646		4,697
Bobby abnormally terminated	3	(2.7%)	123	(5.5%)	51	(7.3%)	102	(6.2%)	279 (5.9%)
Bobby "locked up"	6	(5.5%)	83	(3.7%)	25	(3.6%)	66	(4%)	180 (3.8%)
Bobby completed successfully	101	(91.8%)	2,036	(90.8%)	622	(89.1%)	1,477	(89.7%)	4,236 (90.2%)

Table E.4: Bobby Priority 1 diagnostics triggered during the investigation

ID		IE		UK		FR		DE		Overall
g9	Provide alternative text for all images	92	(91.1%)	1,840	(90.4%)	603	(96.9%)	1,339	(90.7%)	3,874 (91.5%)
g39	Give each frame a title	22	(21.8%)	491	(24.1%)	235	(37.8%)	721	(48.8%)	1,469 (34.7%)
g38	Each FRAME must reference an HTML file	23	(22.8%)	452	(22.2%)	217	(34.9%)	706	(47.8%)	1,398 (33%)
g240	Provide alternative text for all image map hot-spots	22	(21.8%)	372	(18.3%)	227	(36.5%)	233	(15.8%)	854 (20.2%)
g10	Provide alternative text for all image-type buttons in forms	12	(11.9%)	171	(8.4%)	79	(12.7%)	141	(9.5%)	403 (9.5%)
g21	Provide alternative text for each APPLET	7	(6.9%)	116	(5.7%)	34	(5.5%)	72	(4.9%)	229 (5.4%)
g20	Provide alternative content for each OBJECT	0	(0%)	2	(0.1%)	3	(0.5%)	4	(0.3%)	9 (0.2%)

Figure E.1: Bobby Priority 1 diagnostics

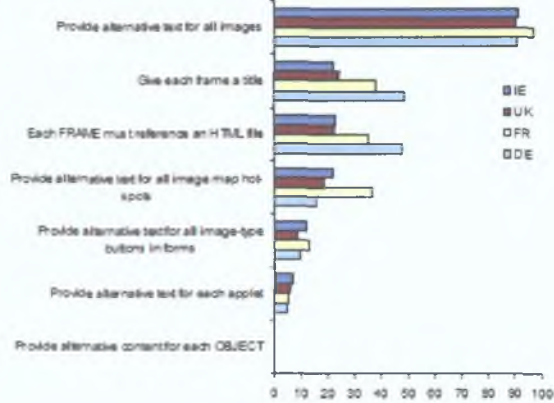


Table E.5: Density of Bobby Priority 1 diagnostics

	IE	UK	FR	DE	Overall
Web sites with Bobby completed successfully	101	2,036	622	1,477	4,236
Web sites that triggered 0 distinct diagnostics	7 (6.9%)	157 (7.7%)	12 (1.9%)	69 (4.7%)	245 (5.8%)
Web sites that triggered 1 distinct diagnostic	48 (47.5%)	991 (48.7%)	211 (33.9%)	513 (34.7%)	1,763 (41.6%)
Web sites that triggered 2 distinct diagnostic	21 (20.8%)	388 (19.1%)	156 (25.1%)	222 (15%)	787 (18.6%)
Web sites that triggered 3 distinct diagnostics	15 (14.9%)	344 (16.9%)	119 (19.1%)	465 (31.5%)	943 (22.3%)
Web sites that triggered 4 distinct diagnostics	7 (6.9%)	135 (6.6%)	102 (16.4%)	177 (12%)	421 (9.9%)
Web sites that triggered 5 distinct diagnostics	3 (3%)	21 (1%)	22 (3.5%)	30 (2%)	76 (1.8%)
Web sites that triggered 6 distinct diagnostics	0 (0%)	0 (0%)	0 (0%)	1 (0.1%)	1 (0%)

Figure E.2: Density of Bobby Priority 1 diagnostics

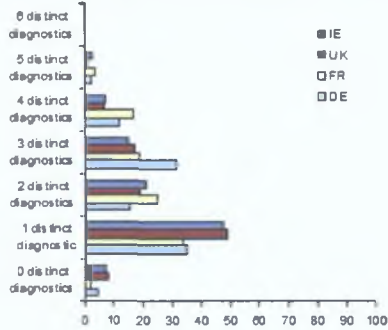


Figure E.3: Bobby Priority 2 diagnostics

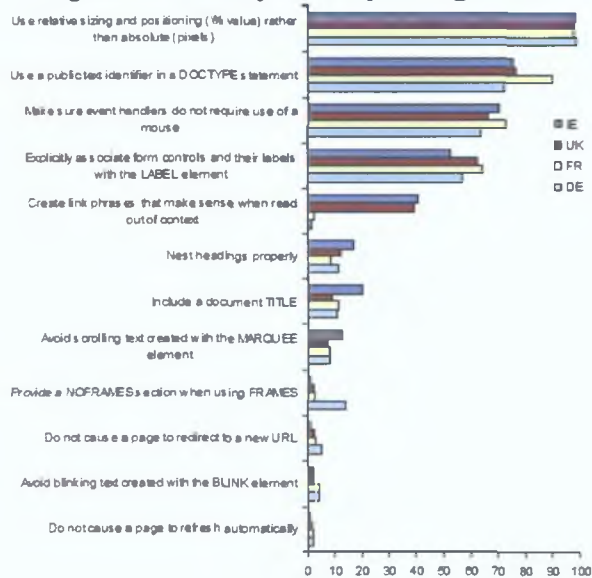


Figure E.4: Density of Bobby Priority 2 diagnostics

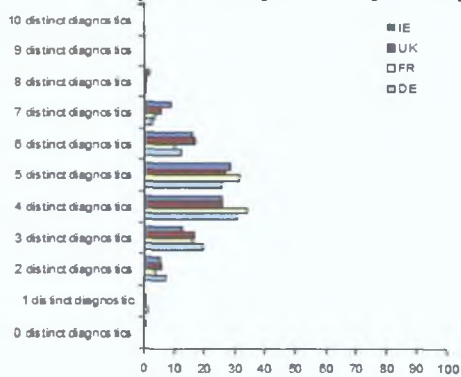


Table E.6: Bobby Priority 2 diagnostics triggered during the investigation

ID		IE		UK		FR		DE		Overall	
g104	Use relative sizing and positioning (% value) rather than absolute (pixels)	99	(98%)	1,983	(97.4%)	609	(97.9%)	1,454	(98.4%)	4,145	(97.9%)
g271	Use a public text identifier in a DOCTYPE statement	76	(75.2%)	1,553	(76.3%)	560	(90%)	1,067	(72.2%)	3,256	(76.9%)
g269	Make sure event handlers do not require use of a mouse	71	(70.3%)	1,347	(66.2%)	452	(72.7%)	942	(63.8%)	2,812	(66.4%)
g41	Explicitly associate form controls and their labels with the LABEL element	53	(52.5%)	1,269	(62.3%)	401	(64.5%)	838	(56.7%)	2,561	(60.5%)
g34	Create link phrases that make sense when read out of context	41	(40.6%)	797	(39.1%)	17	(2.7%)	21	(1.4%)	876	(20.7%)
g2	Nest headings properly	17	(16.8%)	243	(11.9%)	54	(8.7%)	167	(11.3%)	481	(11.4%)
g273	Include a document TITLE	20	(19.8%)	186	(9.1%)	71	(11.4%)	162	(11%)	439	(10.4%)
g5	Avoid scrolling text created with the MARQUEE element	13	(12.9%)	149	(7.3%)	52	(8.4%)	115	(7.8%)	329	(7.8%)
g37	Provide a NOFRAMES section when using FRAMES	1	(1%)	47	(2.3%)	16	(2.6%)	212	(14.4%)	276	(6.5%)
g254	Do not cause a page to redirect to a new URL	1	(1%)	51	(2.5%)	19	(3.1%)	80	(5.4%)	151	(3.6%)
g4	Avoid blinking text created with the BLINK element	2	(2%)	40	(2%)	27	(4.3%)	63	(4.3%)	132	(3.1%)
g33	Do not cause a page to refresh automatically	1	(1%)	34	(1.7%)	14	(2.3%)	32	(2.2%)	81	(1.9%)

Table E.7: Density of Bobby Priority 2 diagnostics

	IE	UK	FR	DE	Overall
Web sites with Bobby completed successfully	101	2,036	622	1,477	4,236
Web sites that triggered 0 distinct diagnostics	1 (1%)	6 (0.3%)	0 (0%)	1 (0.1%)	8 (0.2%)
Web sites that triggered 1 distinct diagnostic	0 (0%)	24 (1.2%)	5 (0.8%)	20 (1.4%)	49 (1.2%)
Web sites that triggered 2 distinct diagnostics	5 (5%)	113 (5.6%)	21 (3.4%)	104 (7%)	243 (5.7%)
Web sites that triggered 3 distinct diagnostics	13 (12.9%)	336 (16.5%)	98 (15.8%)	285 (19.3%)	732 (17.3%)
Web sites that triggered 4 distinct diagnostics	26 (25.7%)	522 (25.6%)	210 (33.8%)	456 (30.9%)	1,214 (28.7%)
Web sites that triggered 5 distinct diagnostics	29 (28.7%)	548 (26.9%)	196 (31.5%)	379 (25.7%)	1,152 (27.2%)
Web sites that triggered 6 distinct diagnostics	16 (15.8%)	342 (16.8%)	64 (10.3%)	181 (12.3%)	603 (14.2%)
Web sites that triggered 7 distinct diagnostics	9 (8.9%)	115 (5.6%)	23 (3.7%)	42 (2.8%)	189 (4.5%)
Web sites that triggered 8 distinct diagnostics	2 (2%)	24 (1.2%)	5 (0.8%)	9 (0.6%)	40 (0.9%)
Web sites that triggered 9 distinct diagnostics	0 (0%)	5 (0.2%)	0 (0%)	0 (0%)	5 (0.1%)
Web sites that triggered 10 distinct diagnostics	0 (0%)	1 (0%)	0 (0%)	0 (0%)	1 (0%)

### E.3 HTML technical standards conformance investigation results

Table E.8: Details regarding OpenSP executions

	IE	UK	FR	DE	Overall
Web sites processed by OpenSP	110	2,243	698	1,646	4,697
Web sites where all the web pages had usable document type information	1 (0.9%)	52 (2.3%)	4 (0.6%)	54 (3.3%)	111 (2.4%)
Web sites considered for HTML defects analysis	45 (40.9%)	792 (35.3%)	175 (25.1%)	706 (42.9%)	1,718 (36.6%)

Table E.9: Document Type Declaration in web pages considered by OpenSP

	IE	UK	FR	DE	Overall
Web pages processed by OpenSP	1,966	40,769	13,461	37,245	93,441
No document type information	1,310 (66.6%)	28,023 (68.7%)	10,954 (81.4%)	22,382 (60.1%)	62,669 (67.1%)
Incorrect document type information	70 (3.6%)	843 (2.1%)	407 (3%)	2,024 (5.4%)	3,344 (3.6%)
Usable document type information	549 (27.9%)	11,409 (28%)	2,050 (15.2%)	12,502 (33.6%)	26,510 (28.4%)
Considered for HTML defects analysis (in web sites with at least 3 web pages and 100 KB of data with usable document type information)	542 (27.6%)	11,146 (27.3%)	1,934 (14.4%)	12,270 (32.9%)	25,892 (27.7%)

Table E.10: The 10 most common OpenSP diagnostics triggered in the investigation

ID		IE		UK		FR		DE		Overall
108	Undefined attribute	42	(93.3%)	687	(86.7%)	142	(81.1%)	633	(89.7%)	1,504 (87.5%)
127	Required attribute not specified	34	(75.6%)	605	(76.4%)	136	(77.7%)	567	(80.3%)	1,342 (78.1%)
64	Element not allowed by document type	35	(77.8%)	559	(70.6%)	123	(70.3%)	548	(77.6%)	1,265 (73.6%)
79	End tag for not opened element	32	(71.1%)	539	(68.1%)	103	(58.9%)	479	(67.8%)	1,153 (67.1%)
68	Missing required end tag (element DTD)	28	(62.2%)	362	(45.7%)	70	(40%)	358	(50.7%)	818 (47.6%)
25	General entity not defined and no default entity	22	(48.9%)	395	(49.9%)	82	(46.9%)	309	(43.8%)	808 (47%)
139	Non SGML character number	27	(60%)	332	(41.9%)	71	(40.6%)	332	(47%)	762 (44.4%)
73	End tag for element not finished	16	(35.6%)	285	(36%)	44	(25.1%)	302	(42.8%)	647 (37.7%)
131	Attribute value not allowed	21	(46.7%)	285	(36%)	71	(40.6%)	256	(36.3%)	633 (36.8%)
82	Attribute value must be literal	23	(51.1%)	268	(33.8%)	47	(26.9%)	243	(34.4%)	581 (33.8%)

Figure E.5: The 10 most common OpenSP diagnostics

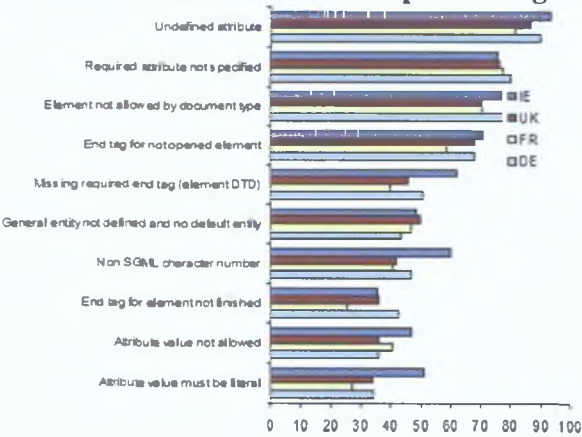


Table E.11: **Density of OpenSP diagnostics**

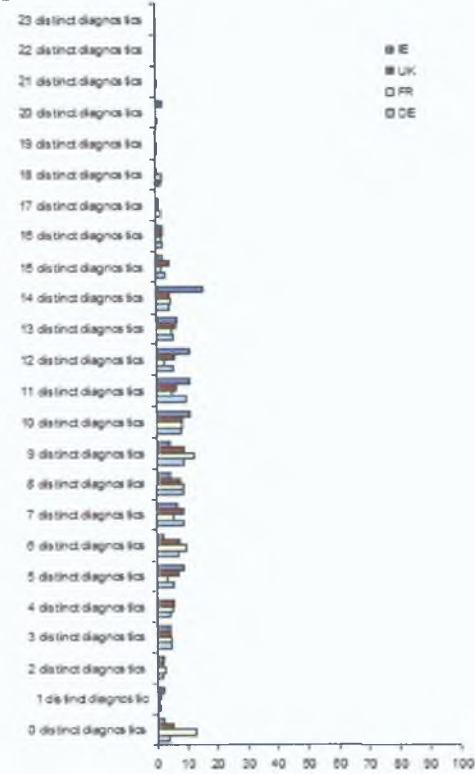
	IE	UK	FR	DE	Overall
Web sites considered for further analysis	45	792	175	706	1,718
Web sites that triggered 0 distinct diagnostics	1 (2.2%)	41 (5.2%)	22 (12.6%)	29 (4.1%)	93 (5.4%)
Web sites that triggered 1 distinct diagnostic	1 (2.2%)	11 (1.4%)	1 (0.6%)	6 (0.8%)	19 (1.1%)
Web sites that triggered 2 distinct diagnostics	1 (2.2%)	14 (1.8%)	5 (2.9%)	11 (1.6%)	31 (1.8%)
Web sites that triggered 3 distinct diagnostics	2 (4.4%)	36 (4.5%)	8 (4.6%)	33 (4.7%)	79 (4.6%)
Web sites that triggered 4 distinct diagnostics	0 (0%)	45 (5.7%)	9 (5.1%)	32 (4.5%)	86 (5%)
Web sites that triggered 5 distinct diagnostics	4 (8.9%)	56 (7.1%)	6 (3.4%)	37 (5.2%)	103 (6%)
Web sites that triggered 6 distinct diagnostics	1 (2.2%)	61 (7.7%)	17 (9.7%)	53 (7.5%)	132 (7.7%)
Web sites that triggered 7 distinct diagnostics	3 (6.7%)	73 (9.2%)	10 (5.7%)	63 (8.9%)	149 (8.7%)
Web sites that triggered 8 distinct diagnostics	2 (4.4%)	62 (7.8%)	16 (9.1%)	63 (8.9%)	143 (8.3%)
Web sites that triggered 9 distinct diagnostics	2 (4.4%)	69 (8.7%)	21 (12%)	62 (8.8%)	154 (9%)
Web sites that triggered 10 distinct diagnostics	5 (11.1%)	68 (8.6%)	15 (8.6%)	57 (8.1%)	145 (8.4%)
Web sites that triggered 11 distinct diagnostics	5 (11.1%)	50 (6.3%)	9 (5.1%)	68 (9.6%)	132 (7.7%)
Web sites that triggered 12 distinct diagnostics	5 (11.1%)	47 (5.9%)	5 (2.9%)	39 (5.5%)	96 (5.6%)
Web sites that triggered 13 distinct diagnostics	3 (6.7%)	50 (6.3%)	9 (5.1%)	40 (5.7%)	102 (5.9%)
Web sites that triggered 14 distinct diagnostics	7 (15.6%)	34 (4.3%)	8 (4.6%)	32 (4.5%)	81 (4.7%)
Web sites that triggered 15 distinct diagnostics	1 (2.2%)	35 (4.4%)	3 (1.7%)	21 (3%)	60 (3.5%)
Web sites that triggered 16 distinct diagnostics	1 (2.2%)	19 (2.4%)	3 (1.7%)	16 (2.3%)	39 (2.3%)



Table E.11: **Density of OpenSP diagnostics**

	IE		UK		FR		DE		Overall	
Web sites that triggered 17 distinct diagnostics	0	(0%)	9	(1.1%)	2	(1.1%)	15	(2.1%)	26	(1.5%)
Web sites that triggered 18 distinct diagnostics	0	(0%)	6	(0.8%)	4	(2.3%)	14	(2%)	24	(1.4%)
Web sites that triggered 19 distinct diagnostics	0	(0%)	4	(0.5%)	1	(0.6%)	5	(0.7%)	10	(0.6%)
Web sites that triggered 20 distinct diagnostics	1	(2.2%)	1	(0.1%)	0	(0%)	5	(0.7%)	7	(0.4%)
Web sites that triggered 21 distinct diagnostics	0	(0%)	1	(0.1%)	1	(0.6%)	3	(0.4%)	5	(0.3%)
Web sites that triggered 22 distinct diagnostics	0	(0%)	0	(0%)	0	(0%)	0	(0%)	0	(0%)
Web sites that triggered 23 distinct diagnostics	0	(0%)	0	(0%)	0	(0%)	2	(0.3%)	2	(0.1%)

Figure E.6: Density of OpenSP diagnostics



## **Appendix F**

### **Results of surveys conducted on the web sample of subjectively selected Irish web sites (April 2002–December 2004)**

#### **F.1 Web content mirroring process results**

Table F.1: Results of the web content sampling process

	Apr 2002	Dec 2002	May 2003	Jan 2004	May 2004	Dec 2004	Average
Data amount retrieved	33 MB	35 MB	34 MB	34 MB	36 MB	32 MB	34 MB
Web pages considered for mirroring	3,586	3,552	3,382	3,051	3,052	2,749	3,228.7
Web pages correctly retrieved (size>0 and no retrieval errors)	3,234 (90.2%)	3,131 (88.1%)	2,980 (88.1%)	2,667 (87.4%)	2,690 (88.1%)	2,318 (84.3%)	2,836.7 (87.9%)
Web pages in web sites qualified for conformance investigations	3,001 (83.7%) (83.1%)	2,950 (83.5%)	2,825 (83%)	2,531 (84.6%)	2,582 (79.8%)	2,195 (83%)	2,680.7
Web sites qualified for conformance investigations	167 (78%)	159 (74.3%)	156 (72.9%)	153 (71.5%)	162 (75.7%)	143 (66.8%)	156.7 (73.2%)

Table F.2: Details regarding the web sites that didn't qualify for investigations

	Apr 2002	Dec 2002	May 2003	Jan 2004	May 2004	Dec 2004	Common	Average
Web sites not qualified or investigations	47	55	58	61	52	71	18	57.3
No data retrieved	8 (17%)	9 (16.4%)	9 (15.5%)	10 (16.4%)	10 (19.2%)	19 (26.8%)	2 (11.1%)	10.8 (18.9%)
Only the main page retrieved (size>0)	19 (40.4%)	27 (49.1%)	31 (53.4%)	32 (52.5%)	25 (48.1%)	34 (47.9%)	4 (22.2%)	28 (48.8%)
Less than 3 pages (2) and at least 100 KB retrieved	0 (0%)	0 (0%)	0 (0%)	0 (0%)	0 (0%)	0 (0%)	0 (0%)	0 (0%)
Less than 100 KB and at least 3 pages retrieved	18 (38.3%)	17 (30.9%)	15 (25.9%)	14 (23%)	11 (21.2%)	14 (19.7%)	4 (22.2%)	14.8 (25.9%)
Less than 3 pages (2) and less than 100 KB (but more than 0) retrieved	2 (4.3%)	2 (3.6%)	3 (5.2%)	5 (8.2%)	6 (11.5%)	4 (5.6%)	0 (0%)	3.7 (6.4%)

## F.2 WCAG 1.0 conformance investigation results

Table F.3: Details regarding Bobby executions

	Apr 2002	Dec 2002	May 2003	Jan 2004	May 2004	Dec 2004	Average
Web sites considered by Bobby	167	159	156	153	162	143	156.7
Bobby abnormally terminated	9 (5.4%)	16 (10.1%)	13 (8.3%)	10 (6.5%)	14 (8.6%)	8 (5.6%)	11.7 (7.4%)
Bobby "locked up"	11 (6.6%)	8 (5%)	9 (5.8%)	7 (4.6%)	8 (4.9%)	5 (3.5%)	8 (5.1%)
Bobby completed successfully	147 (88%)	135 (84.9%)	134 (85.9%)	136 (88.9%)	140 (86.4%)	130 (90.9%)	137 (87.4%)

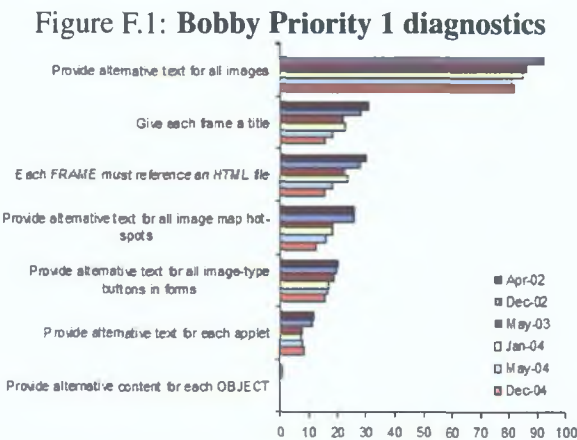


Table F.4: Bobby Priority 1 diagnostics triggered during the investigation

ID		Apr 2002	Dec 2002	May 2003	Jan 2004	May 2004	Dec 2004	Average
g9	Provide alternative text for all images	132 (89.8%)	125 (92.6%)	115 (85.8%)	115 (84.6%)	113 (80.7%)	106 (81.5%)	117.7 (85.8%)
g39	Give each frame a title	45 (30.6%)	38 (28.1%)	29 (21.6%)	31 (22.8%)	25 (17.9%)	20 (15.4%)	31.3 (22.7%)
g38	Each FRAME must reference an HTML file	44 (29.9%)	37 (27.4%)	30 (22.4%)	32 (23.5%)	25 (17.9%)	20 (15.4%)	31.3 (22.7%)
g240	Provide alternative text for all image map hot-spots	38 (25.9%)	35 (25.9%)	24 (17.9%)	25 (18.4%)	22 (15.7%)	16 (12.3%)	26.7 (19.3%)
g10	Provide alternative text for all image-type buttons in forms	29 (19.7%)	26 (19.3%)	25 (18.7%)	23 (16.9%)	23 (16.4%)	20 (15.4%)	24.3 (17.7%)
g21	Provide alternative text for each APPLET	17 (11.6%)	15 (11.1%)	10 (7.5%)	10 (7.4%)	11 (7.9%)	11 (8.5%)	12.3 (9%)
g20	Provide alternative content for each OBJECT	1 (0.7%)	1 (0.7%)	0 (0%)	0 (0%)	0 (0%)	0 (0%)	0.3 (0.2%)

Figure F.2: Density of Bobby Priority 1 diagnostics

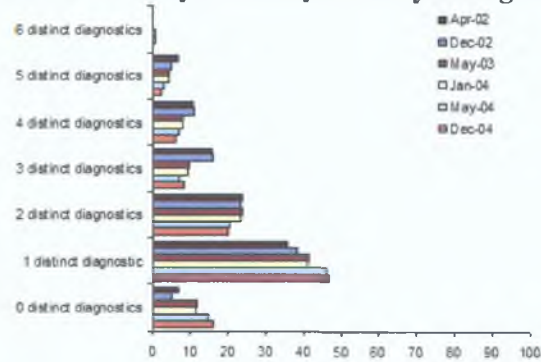


Table F.5: Density of Bobby Priority 1 diagnostics

	Apr 2002	Dec 2002	May 2003	Jan 2004	May 2004	Dec 2004	Average
Web sites with Bobby completed successfully	147	135	134	136	140	130	137
Web sites that triggered 0 distinct diagnostics	10 (6.8%)	7 (5.2%)	16 (11.9%)	17 (12.5%)	21 (15%)	21 (16.2%)	15.3 (11.2%)
Web sites that triggered 1 distinct diagnostic	53 (36.1%)	52 (38.5%)	56 (41.8%)	56 (41.2%)	65 (46.4%)	61 (46.9%)	57.2 (41.7%)
Web sites that triggered 2 distinct diagnostics	35 (23.8%)	32 (23.7%)	32 (23.9%)	32 (23.5%)	29 (20.7%)	26 (20%)	31 (22.6%)
Web sites that triggered 3 distinct diagnostics	23 (15.6%)	22 (16.3%)	13 (9.7%)	13 (9.6%)	10 (7.1%)	11 (8.5%)	15.3 (11.2%)
Web sites that triggered 4 distinct diagnostics	16 (10.9%)	15 (11.1%)	11 (8.2%)	11 (8.1%)	10 (7.1%)	8 (6.2%)	11.8 (8.6%)
Web sites that triggered 5 distinct diagnostics	10 (6.8%)	7 (5.2%)	6 (4.5%)	6 (4.4%)	4 (2.9%)	3 (2.3%)	6 (4.4%)
Web sites that triggered 6 distinct diagnostics	0 (0%)	0 (0%)	0 (0%)	1 (0.7%)	1 (0.7%)	0 (0%)	0.3 (0.2%)

Table F.6: **Bobby Priority 2 diagnostics triggered during the investigation**

ID		Apr 2002	Dec 2002	May 2003	Jan 2004	May 2004	Dec 2004	Average
g104	Use relative sizing and positioning (% value) rather than absolute (pixels)	145 (98.6%)	133 (98.5%)	129 (96.3%)	130 (95.6%)	132 (94.3%)	122 (93.8%)	131.8 (96.2%)
g41	Explicitly associate form controls and their labels with the LABEL element	106 (72.1%)	104 (77%)	100 (74.6%)	101 (74.3%)	106 (75.7%)	100 (76.9%)	102.8 (75.1%)
g271	Use a public text identifier in a DOC-TYPE statement	132 (89.8%)	116 (85.9%)	102 (76.1%)	94 (69.1%)	89 (63.6%)	75 (57.7%)	101.3 (73.7%)
g269	Make sure event handlers do not require use of a mouse	101 (68.7%)	98 (72.6%)	97 (72.4%)	100 (73.5%)	103 (73.6%)	96 (73.8%)	99.2 (72.4%)
g34	Create link phrases that make sense when read out of context	58 (39.5%)	59 (43.7%)	57 (42.5%)	60 (44.1%)	55 (39.3%)	52 (40%)	56.8 (41.5%)
g273	Include a document TITLE	17 (11.6%)	16 (11.9%)	17 (12.7%)	18 (13.2%)	14 (10%)	13 (10%)	15.8 (11.6%)
g2	Nest headings properly	9 (6.1%)	8 (5.9%)	11 (8.2%)	9 (6.6%)	11 (7.9%)	13 (10%)	10.2 (7.5%)
g37	Provide a NOFRAMES section when using FRAMES	6 (4.1%)	6 (4.4%)	6 (4.5%)	6 (4.4%)	4 (2.9%)	4 (3.1%)	5.3 (3.9%)
g254	Do not cause a page to redirect to a new URL	4 (2.7%)	3 (2.2%)	3 (2.2%)	4 (2.9%)	4 (2.9%)	2 (1.5%)	3.3 (2.4%)
g33	Do not cause a page to refresh automatically	5 (3.4%)	2 (1.5%)	2 (1.5%)	3 (2.2%)	3 (2.1%)	4 (3.1%)	3.2 (2.3%)
g5	Avoid scrolling text created with the MARQUEE element	3 (2%)	3 (2.2%)	2 (1.5%)	2 (1.5%)	3 (2.1%)	2 (1.5%)	2.5 (1.8%)
g4	Avoid blinking text	2	1	1	0	0	0	0.7



Table F.6: Bobby Priority 2 diagnostics triggered during the investigation

ID		Apr 2002	Dec 2002	May 2003	Jan 2004	May 2004	Dec 2004	Average
	created with the BLINK element	(1.4%)	(0.7%)	(0.7%)	(0%)	(0%)	(0%)	(0.5%)

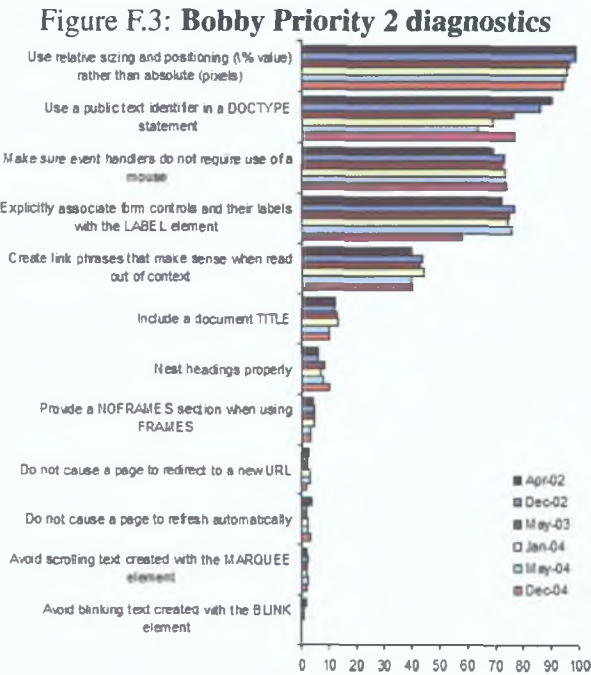
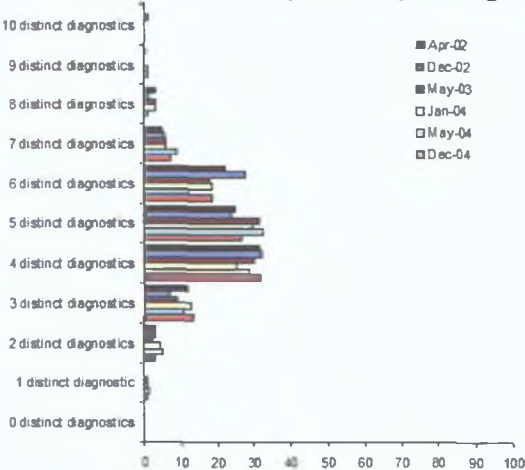


Table F.7: **Density of Bobby Priority 2 diagnostics**

	<b>Apr 2002</b>	<b>Dec 2002</b>	<b>May 2003</b>	<b>Jan 2004</b>	<b>May 2004</b>	<b>Dec 2004</b>	<b>Average</b>
Web sites with Bobby completed successfully	147	135	134	136	140	130	137
Web sites that triggered 0 distinct diagnostics	0 (0%)	0 (0%)	0 (0%)	0 (0%)	0 (0%)	0 (0%)	0 (0%)
Web sites that triggered 1 distinct diagnostic	0 (0%)	0 (0%)	1 (0.7%)	1 (0.7%)	2 (1.4%)	1 (0.8%)	0.8 (0.6%)
Web sites that triggered 2 distinct diagnostics	4 (2.7%)	4 (3%)	3 (2.2%)	6 (4.4%)	7 (5%)	4 (3.1%)	4.7 (3.4%)
Web sites that triggered 3 distinct diagnostics	17 (11.6%)	9 (6.7%)	12 (9%)	17 (12.5%)	15 (10.7%)	17 (13.1%)	14.5 (10.6%)
Web sites that triggered 4 distinct diagnostics	46 (31.3%)	43 (31.9%)	40 (29.9%)	34 (25%)	40 (28.6%)	41 (31.5%)	40.7 (29.7%)
Web sites that triggered 5 distinct diagnostics	36 (24.5%)	32 (23.7%)	42 (31.3%)	40 (29.4%)	45 (32.1%)	34 (26.2%)	38.2 (27.9%)
Web sites that triggered 6 distinct diagnostics	32 (21.8%)	37 (27.4%)	24 (17.9%)	25 (18.4%)	17 (12.1%)	24 (18.5%)	26.5 (19.3%)
Web sites that triggered 7 distinct diagnostics	7 (4.8%)	7 (5.2%)	8 (6%)	8 (5.9%)	12 (8.6%)	9 (6.9%)	8.5 (6.2%)
Web sites that triggered 8 distinct diagnostics	4 (2.7%)	2 (1.5%)	4 (3%)	4 (2.9%)	1 (0.7%)	0 (0%)	2.5 (1.8%)
Web sites that triggered 9 distinct diagnostics	1 (0.7%)	0 (0%)	0 (0%)	1 (0.7%)	1 (0.7%)	0 (0%)	0.5 (0.4%)
Web sites that triggered 10 distinct diagnostics	0 (0%)	1 (0.7%)	0 (0%)	0 (0%)	0 (0%)	0 (0%)	0.2 (0.1%)

Figure F.4: Density of Bobby Priority 2 diagnostics



### F.3 HTML technical standards conformance investigation results

Table F.8: Details regarding OpenSP executions

	Apr 2002	Dec 2002	May 2003	Jan 2004	May 2004	Dec 2004	Average
Web sites processed by OpenSP	167	159	156	153	162	143	156.7
Web sites where all the web pages had usable document type information	0 (0%)	0 (0%)	1 (0.6%)	0 (0%)	0 (0%)	0 (0%)	0.2 (0.1%)
Web sites considered for HTML defects analysis	54 (32.3%)	57 (35.8%)	67 (42.9%)	74 (48.4%)	80 (49.4%)	79 (55.2%)	68.5 (43.7%)

Table F.9: Document Type Declaration in web pages considered by OpenSP

	Apr 2002	Dec 2002	May 2003	Jan 2004	May 2004	Dec 2004	Average
Web pages processed by OpenSP	3,295	2,950	2,825	2,531	2,582	2,195	2729.7
No document type information	2,222 (67.4%)	2,109 (71.5%)	1,866 (66.1%)	1,547 (61.1%)	1,497 (58%)	1,206 (54.9%)	1741.2 (63.8%)
Incorrect document type information	46 (1.4%)	57 (1.9%)	23 (0.8%)	8 (0.3%)	16 (0.6%)	8 (0.4%)	26.3 (1%)
Usable document type information	704 (21.4%)	751 (25.5%)	932 (33%)	974 (38.5%)	1,068 (41.4%)	980 (44.6%)	901.5 (33%)
Considered for HTML defects analysis (in web sites with at least 3 web pages and 100 KB of data with usable document type information)	671 (20.4%)	726 (24.6%)	910 (32.2%)	952 (37.6%)	1,037 (40.2%)	958 (43.6%)	875.7 (32.1%)

Table F.10: The 10 most common OpenSP diagnostics triggered in the investigation

ID		Apr 2002	Dec 2002	May 2003	Jan 2004	May 2004	Dec 2004	Average
108	Undefined attribute	51 (94.4%)	55 (96.5%)	66 (98.5%)	68 (91.9%)	73 (91.3%)	71 (89.9%)	64 (93.7%)
64	Element not allowed by document type	44 (81.5%)	48 (84.2%)	53 (79.1%)	60 (81.1%)	65 (81.3%)	63 (79.7%)	55.5 (81.1%)
79	End tag for not opened element	43 (79.6%)	43 (75.4%)	53 (79.1%)	68 (91.9%)	70 (87.5%)	69 (87.3%)	57.7 (83.5%)
127	Required attribute not specified	37 (68.5%)	45 (78.9%)	54 (80.6%)	65 (87.8%)	66 (82.5%)	69 (87.3%)	56 (81%)
68	Missing required end tag (element DTD)	31 (57.4%)	31 (54.4%)	35 (52.2%)	42 (56.8%)	42 (52.5%)	43 (54.4%)	37.3 (54.6%)
131	Attribute value not allowed	24 (44.4%)	30 (52.6%)	27 (40.3%)	34 (45.9%)	35 (43.8%)	38 (48.1%)	31.3 (45.9%)
73	End tag for element not finished	24 (44.4%)	25 (43.9%)	32 (47.8%)	35 (47.3%)	39 (48.8%)	39 (49.4%)	32.3 (46.9%)
139	Non SGML character number	23 (42.6%)	29 (50.9%)	35 (52.2%)	37 (50%)	47 (58.8%)	44 (55.7%)	35.8 (51.7%)
82	Attribute value must be literal	20 (37%)	25 (43.9%)	27 (40.3%)	27 (36.5%)	26 (32.5%)	24 (30.4%)	24.8 (36.8%)
25	General entity not defined and no default entity	19 (35.2%)	27 (47.4%)	34 (50.7%)	36 (48.6%)	44 (55%)	47 (59.5%)	34.5 (49.4%)

Figure F.5: The 10 most common OpenSP diagnostics

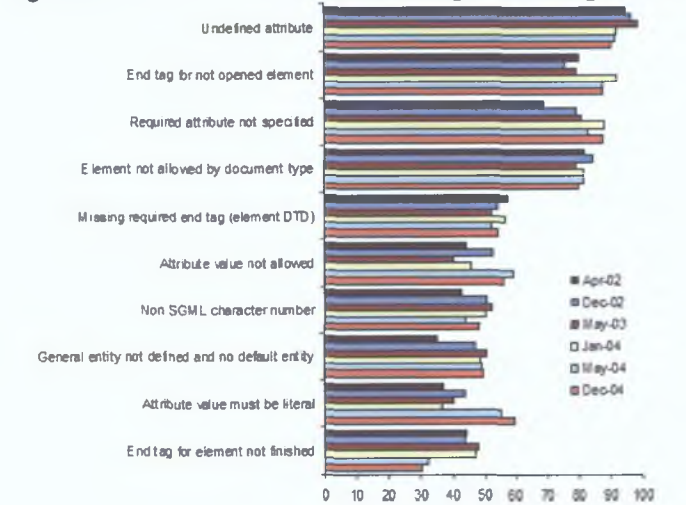


Table F.11: **Density of OpenSP diagnostics**

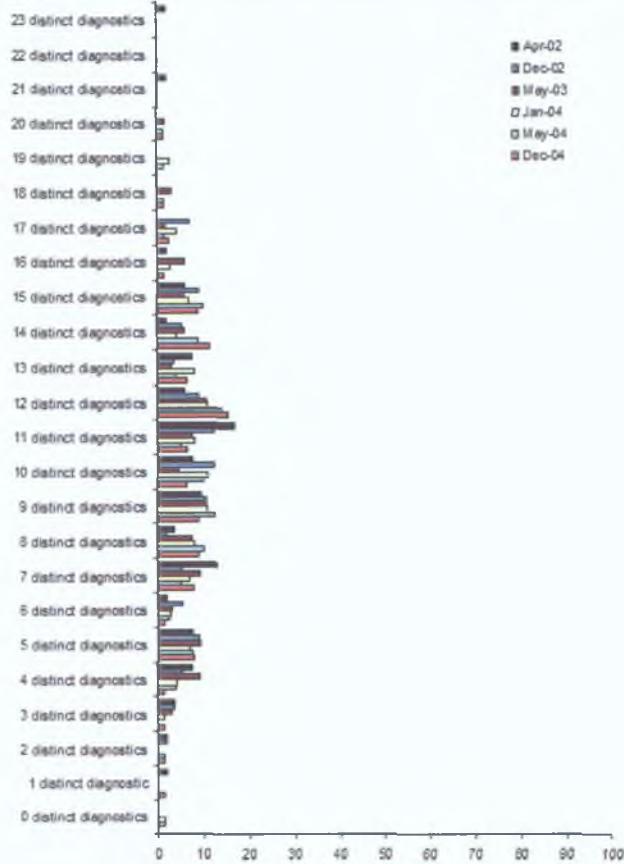
	<b>Apr 2002</b>	<b>Dec 2002</b>	<b>May 2003</b>	<b>Jan 2004</b>	<b>May 2004</b>	<b>Dec 2004</b>	<b>Average</b>
Web sites considered for HTML defects analysis	54	57	67	74	80	79	68.5
Web sites that triggered 0 distinct diagnostics	0 (0%)	0 (0%)	0 (0%)	1 (1.4%)	1 (1.3%)	0 (0%)	0.3 (0.5%)
Web sites that triggered 1 distinct diagnostic	1 (1.9%)	0 (0%)	0 (0%)	0 (0%)	0 (0%)	1 (1.3%)	0.3 (0.5%)
Web sites that triggered 2 distinct diagnostics	1 (1.9%)	1 (1.8%)	0 (0%)	0 (0%)	1 (1.3%)	1 (1.3%)	0.7 (1%)
Web sites that triggered 3 distinct diagnostics	2 (3.7%)	2 (3.5%)	2 (3%)	1 (1.4%)	0 (0%)	1 (1.3%)	1.3 (1.9%)
Web sites that triggered 4 distinct diagnostics	4 (7.4%)	3 (5.3%)	6 (9%)	3 (4.1%)	3 (3.8%)	1 (1.3%)	3.3 (4.9%)
Web sites that triggered 5 distinct diagnostics	4 (7.4%)	5 (8.8%)	6 (9%)	5 (6.8%)	6 (7.5%)	6 (7.6%)	5.3 (7.8%)
Web sites that triggered 6 distinct diagnostics	1 (1.9%)	3 (5.3%)	2 (3%)	2 (2.7%)	2 (2.5%)	1 (1.3%)	1.8 (2.7%)
Web sites that triggered 7 distinct diagnostics	7 (13%)	3 (5.3%)	6 (9%)	5 (6.8%)	4 (5%)	6 (7.6%)	5.2 (7.5%)
Web sites that triggered 8 distinct diagnostics	2 (3.7%)	1 (1.8%)	5 (7.5%)	6 (8.1%)	8 (10%)	7 (8.9%)	4.8 (7.1%)
Web sites that triggered 9 distinct diagnostics	5 (9.3%)	6 (10.5%)	7 (10.4%)	8 (10.8%)	10 (12.5%)	7 (8.9%)	7.2 (10.5%)
Web sites that triggered 10 distinct diagnostics	4 (7.4%)	7 (12.3%)	3 (4.5%)	8 (10.8%)	8 (10%)	5 (6.3%)	5.8 (8.5%)
Web sites that triggered 11 distinct diagnostics	9 (16.7%)	7 (12.3%)	5 (7.5%)	6 (8.1%)	4 (5%)	5 (6.3%)	6 (8.8%)
Web sites that triggered 12 distinct diagnostics	3 (5.6%)	5 (8.8%)	7 (10.4%)	8 (10.8%)	11 (13.8%)	12 (15.2%)	7.7 (11.2%)
Web sites that triggered 13 distinct diagnostics	4 (7.4%)	2 (3.5%)	2 (3%)	6 (8.1%)	3 (3.8%)	5 (6.3%)	3.7 (5.4%)
Web sites that triggered 14 distinct diagnostics	1 (1.9%)	3 (5.3%)	4 (6%)	3 (4.1%)	7 (8.8%)	9 (11.4%)	4.5 (6.6%)
Web sites that triggered 15 distinct diagnostics	3 (5.6%)	5 (8.8%)	4 (6%)	5 (6.8%)	8 (10%)	7 (8.9%)	5.3 (7.8%)
Web sites that triggered 16 distinct diagnostics	1 (1.9%)	0 (0%)	4 (6%)	2 (2.7%)	0 (0%)	1 (1.3%)	1.3 (1.9%)
Web sites that triggered	0	4	1	3	1	2	1.8

Table F.11: **Density of OpenSP diagnostics**

	<b>Apr 2002</b>	<b>Dec 2002</b>	<b>May 2003</b>	<b>Jan 2004</b>	<b>May 2004</b>	<b>Dec 2004</b>	<b>Average</b>
<i>17 distinct diagnostics</i>	(0%)	(7%)	(1.5%)	(4.1%)	(1.3%)	(2.5%)	(2.7%)
Web sites that triggered 18 distinct diagnostics	0 (0%)	0 (0%)	2 (3%)	0 (0%)	1 (1.3%)	1 (1.3%)	0.7 (1%)
Web sites that triggered 19 distinct diagnostics	0 (0%)	0 (0%)	0 (0%)	2 (2.7%)	1 (1.3%)	0 (0%)	0.5 (0.7%)
Web sites that triggered 20 distinct diagnostics	0 (0%)	0 (0%)	1 (1.5%)	0 (0%)	1 (1.3%)	1 (1.3%)	0.5 (0.7%)
Web sites that triggered 21 distinct diagnostics	1 (1.9%)	0 (0%)	0 (0%)	0 (0%)	0 (0%)	0 (0%)	0.2 (0.2%)
Web sites that triggered 22 distinct diagnostics	0 (0%)	0 (0%)	0 (0%)	0 (0%)	0 (0%)	0 (0%)	0 (0%)
Web sites that triggered 23 distinct diagnostics	1 (1.9%)	0 (0%)	0 (0%)	0 (0%)	0 (0%)	0 (0%)	0.2 (0.2%)



Figure F.6: Density of OpenSP diagnostics



## **Appendix G**

### **Results of surveys conducted on the web sample of randomly selected Irish web sites (May 2003–December 2004)**

#### **G.1 Web content mirroring process results**

**Table G.1: Results of the web content sampling process**

	May 2003	Dec 2003	May 2004	Dec 2004	Average
Data amount retrieved	29 MB	26 MB	26 MB	27 MB	26 MB
Web pages considered for mirroring	3,319	3,043	2,901	2,542	2,951.3
Web pages correctly retrieved (size>0 and no retrieval errors)	2,817 (84.9%)	2,541 (83.5%)	2,400 (82.7%)	2,223 (87.5%)	2,495.3 (84.5%)
Web pages qualified for conformance investigation	2,288 (68.9%)	2,064 (67.8%)	1,966 (67.8%)	1,769 (69.6%)	2,021.8 (68.5%)
Web sites qualified for conformance investigation	123 (45.2%)	111 (40.8%)	110 (40.4%)	100 (36.8%)	111 (40.8%)

**Table G.2: Details regarding the web sites that didn't qualify for investigations**

	May 2003	Dec 2003	May 2004	Dec 2004	Common	Average
Web sites not qualified for investigations	149	161	162	172	132	161
No data retrieved	9 (6%)	15 (9.3%)	21 (13%)	24 (14%)	2 (1.5%)	17.3 (10.7%)
Only the main page retrieved (size>0)	91 (61.1%)	102 (63.4%)	103 (63.6%)	110 (64%)	78 (59.1%)	101.5 (63%)
Less than 3 pages (2) and at least 100 KB retrieved	1 (0.7%)	1 (0.6%)	0 (0%)	0 (0%)	0 (0%)	0.5 (0.3%)
Less than 100 KB and at least 3 pages retrieved	46 (30.9%)	40 (24.8%)	34 (21%)	31 (18%)	24 (18.2%)	37.8 (23.4%)
Less than 3 pages (2) and less than 100 KB (but more than 0) retrieved	2 (1.3%)	3 (1.9%)	4 (2.5%)	7 (4.1%)	1 (0.8%)	4 (2.5%)

## G.2 WCAG 1.0 conformance investigation results

Table G.3: Details regarding Bobby executions

	May 2003	Dec 2003	May 2004	Dec 2004	Average
Web sites considered by Bobby	123	111	110	100	111
Bobby abnormally terminated	3 (2.4%)	3 (2.7%)	3 (2.7%)	1 (1%)	2.5 (2.3%)
Bobby “locked up”	6 (4.9%)	4 (3.6%)	6 (5.5%)	3 (3%)	4.8 (4.3%)
Bobby completed successfully	114 (92.7%)	104 (93.7%)	101 (91.8%)	96 (96%)	103.8 (93.5%)

Table G.4: Bobby Priority 1 diagnostics triggered during the investigation

ID		May 2003	Dec 2003	May 2004	Dec 2004	Average
g9	Provide alternative text for all images	106 (93%)	94 (90.4%)	92 (91.1%)	88 (91.7%)	95 (91.5%)
g38	Each FRAME must reference an HTML file	24 (21.1%)	23 (22.1%)	23 (22.8%)	20 (20.8%)	22.5 (21.7%)
g39	Give each frame a title	25 (21.9%)	23 (22.1%)	22 (21.8%)	20 (20.8%)	22.5 (21.7%)
g240	Provide alternative text for all image map hot-spots	25 (21.9%)	20 (19.2%)	22 (21.8%)	18 (18.8%)	21.3 (20.4%)
g10	Provide alternative text for all image-type buttons in forms	9 (7.9%)	10 (9.6%)	12 (11.9%)	11 (11.5%)	10.5 (10.2%)
g21	Provide alternative text for each APPLET	10 (8.8%)	8 (7.7%)	7 (6.9%)	7 (7.3%)	8 (7.7%)

Figure G.1: Bobby Priority 1 diagnostics

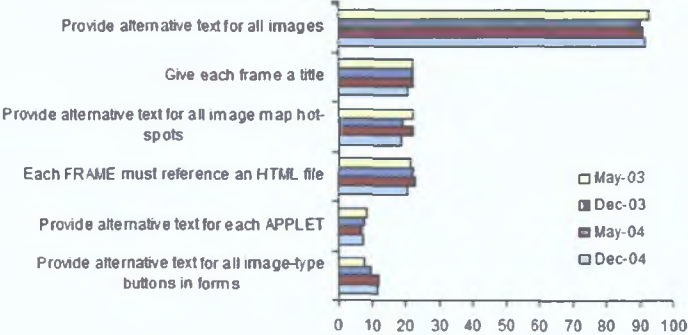


Table G.5: Density of Bobby Priority 1 diagnostics

	May 2003	Dec 2003	May 2004	Dec 2004	Average
Web sites with Bobby completed successfully	114	104	101	96	103.8
Web sites that triggered 0 distinct diagnostics	7 (6.1%)	7 (6.7%)	7 (6.9%)	7 (7.3%)	7 (6.7%)
Web sites that triggered 1 distinct diagnostic	55 (48.2%)	50 (48.1%)	48 (47.5%)	46 (47.9%)	49.8 (48%)
Web sites that triggered 2 distinct diagnostics	25 (21.9%)	25 (24.0%)	21 (20.8%)	22 (22.9%)	23.3 (22.4%)
Web sites that triggered 3 distinct diagnostics	16 (14%)	12 (11.5%)	15 (14.9%)	12 (12.5%)	13.8 (13.3%)
Web sites that triggered 4 distinct diagnostics	9 (7.9%)	8 (7.7%)	7 (6.9%)	7 (7.3%)	7.8 (7.5%)
Web sites that triggered 5 distinct diagnostics	2 (1.8%)	2 (1.9%)	3 (3%)	2 (2.1%)	2.3 (2.2%)

Figure G.2: Density of Bobby Priority 1 diagnostics

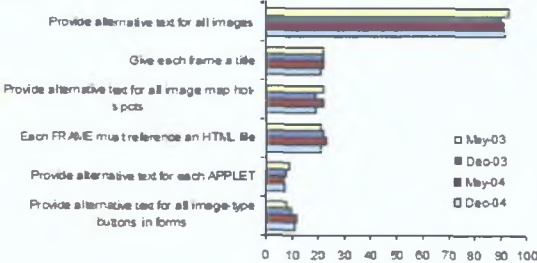


Table G.6: Bobby Priority 2 diagnostics triggered during the investigation

ID		May 2003	Dec 2003	May 2004	Dec 2004	Average
g104	Use relative sizing and positioning (% value) rather than absolute (pixels)	112 (98.2%)	102 (98.1%)	99 (98%)	94 (97.9%)	101.8 (98.1%)
g271	Use a public text identifier in a DOCTYPE statement	100 (87.7%)	83 (79.8%)	76 (75.2%)	74 (77.1%)	83.3 (80%)
g269	Make sure event handlers do not require use of a mouse	85 (74.6%)	76 (73.1%)	71 (70.3%)	66 (68.8%)	74.5 (71.7%)
g41	Explicitly associate form controls and their labels with the LABEL element	71 (62.3%)	58 (55.8%)	53 (52.5%)	47 (49%)	57.3 (54.9%)
g34	Create link phrases that make sense when read out of context	41 (36%)	43 (41.3%)	41 (40.6%)	35 (36.5%)	40 (38.6%)
g273	Include a document TITLE	18 (15.8%)	20 (19.2%)	20 (19.8%)	17 (17.7%)	18.8 (18.1%)
g2	Nest headings properly	17 (14.9%)	20 (19.2%)	17 (16.8%)	13 (13.5%)	16.8 (16.1%)
g5	Avoid scrolling text created with the MARQUEE element	9 (7.9%)	12 (11.5%)	13 (12.9%)	11 (11.5%)	11.3 (10.9%)
g4	Avoid blinking text created with the BLINK element	2 (1.8%)	3 (2.9%)	2 (2%)	1 (1%)	2 (1.9%)
g37	Provide a NOFRAMES section when using FRAMES	3 (2.6%)	3 (2.9%)	1 (1%)	1 (1%)	2 (1.9%)
g33	Do not cause a page to refresh automatically	1 (0.9%)	2 (1.9%)	1 (1%)	1 (1%)	1.3 (1.2%)
g254	Do not cause a page to redirect to a new URL	4 (3.5%)	0 (0%)	1 (1%)	0 (0%)	1.3 (1.1%)

Figure G.3: Bobby Priority 2 diagnostics

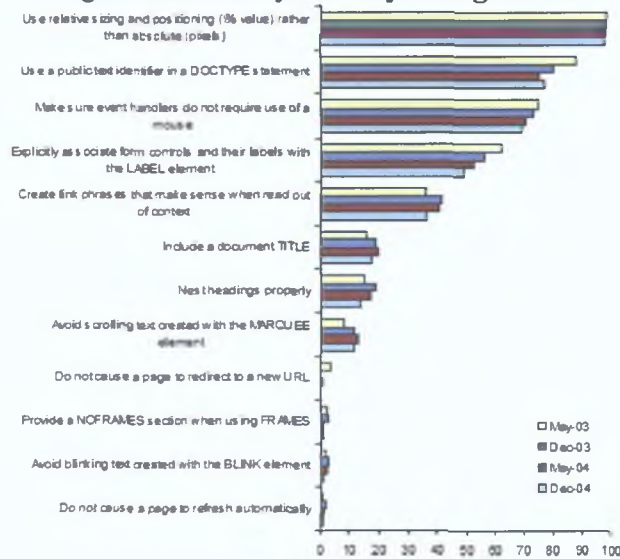


Figure G.4: Density of Bobby Priority 2 diagnostics

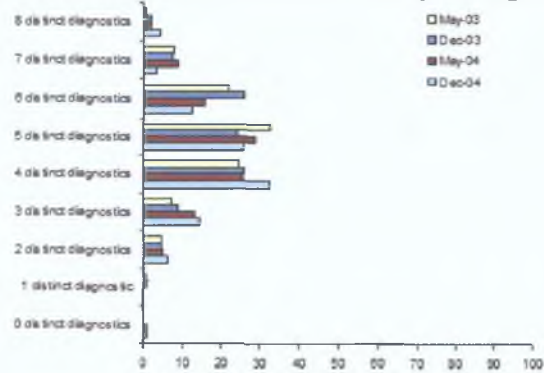


Table G.7: Density of Bobby Priority 2 diagnostics

	May 2003	Dec 2003	May 2004	Dec 2004	Average
Web sites for which Bobby completed successfully	114	104	101	96	103.8
Web sites that triggered 0 distinct diagnostics	0 (0%)	0 (0%)	1 (1%)	1 (1%)	0.5 (0.5%)
Web sites that triggered 1 distinct diagnostic	1 (0.9%)	1 (1%)	0 (0%)	0 (0%)	0.5 (0.5%)
Web sites that triggered 2 distinct diagnostics	5 (4.4%)	5 (4.8%)	5 (5%)	6 (6.3%)	5.3 (5.1%)
Web sites that triggered 3 distinct diagnostics	8 (7%)	9 (8.7%)	13 (12.9%)	14 (14.6%)	11 (10.6%)
Web sites that triggered 4 distinct diagnostics	28 (24.6%)	27 (26%)	26 (25.7%)	31 (32.3%)	28 (27%)
Web sites that triggered 5 distinct diagnostics	37 (32.5%)	25 (24%)	29 (28.7%)	25 (26%)	29 (28%)
Web sites that triggered 6 distinct diagnostics	25 (21.9%)	27 (26%)	16 (15.8%)	12 (12.5%)	20 (19.3%)
Web sites that triggered 7 distinct diagnostics	9 (7.9%)	8 (7.7%)	9 (8.9%)	3 (3.1%)	7.3 (7%)
Web sites that triggered 8 distinct diagnostics	1 (0.9%)	2 (1.9%)	2 (2%)	4 (4.2%)	2.3 (2.2%)
Web sites that triggered 9 distinct diagnostics	0 (0%)	0 (0%)	0 (0%)	0 (0%)	0 (0%)
Web sites that triggered 10 distinct diagnostics	0 (0%)	0 (0%)	0 (0%)	0 (0%)	0 (0%)



### G.3 HTML technical standards conformance investigation results

Table G.8: Details regarding OpenSP executions

	May 2003	Dec 2003	May 2004	Dec 2004	Average
Web sites processed by OpenSP	123	111	110	100	111
Web sites where all the web pages had usable document type information	2 (1.6%)	2 (1.8%)	1 (0.9%)	1 (1%)	1.5 (1.4%)
Web sites considered for HTML defects analysis	36 (29.3%)	39 (35.1%)	45 (40.9%)	49 (49%)	42.3 (38.1%)

Table G.9: Document Type Declaration in web pages considered by OpenSP

	May 2003	Dec 2003	May 2004	Dec 2004	Average
Web pages processed by OpenSP	2,288	2,064	1,966	1,769	2021.8
No document type information	1,732 (75.7%)	1,435 (69.5%)	1,310 (66.6%)	1,071 (60.5%)	1387 (68.6%)
Incorrect document type information	42 (1.8%)	78 (3.8%)	70 (3.6%)	29 (1.6%)	54.8 (2.7%)
Usable document type information	465 (20.3%)	509 (24.7%)	549 (27.9%)	632 (35.7%)	538.8 (26.6%)
Considered for HTML defects analysis (in web sites with at least 3 web pages and 100 KB of data with usable document type information)	454 (19.8%)	500 (24.2%)	542 (27.6%)	623 (35.2%)	529.8 (26.2%)

Table G.10: The 10 most common OpenSP diagnostics triggered in the investigation

ID		May 2003	Dec 2003	May 2004	Dec 2004	Average
108	Undefined attribute	33 (91.7%)	36 (92.3%)	42 (93.3%)	44 (89.8%)	38.8 (91.8%)
64	Element not allowed by document type	29 (80.6%)	31 (79.5%)	35 (77.8%)	36 (73.5%)	32.8 (77.8%)
79	End tag for not opened element	27 (75%)	28 (71.8%)	32 (71.1%)	36 (73.5%)	30.8 (72.8%)
127	Required attribute not specified	19 (52.8%)	28 (71.8%)	34 (75.6%)	39 (79.6%)	30 (69.9%)
139	Non SGML character number	20 (55.6%)	24 (61.5%)	27 (60%)	33 (67.3%)	26 (61.1%)
68	Missing required end tag (element DTD)	20 (55.6%)	22 (56.4%)	28 (62.2%)	24 (49%)	23.5 (55.8%)
25	General entity not defined and no default entity	17 (47.2%)	20 (51.3%)	22 (48.9%)	25 (51%)	21 (49.6%)
82	Attribute value must be literal	16 (44.4%)	18 (46.2%)	23 (51.1%)	24 (49%)	20.3 (47.7%)
131	Attribute value not allowed	10 (27.8%)	15 (38.5%)	21 (46.7%)	21 (42.9%)	16.8 (38.9%)
73	End tag for element not finished	11 (30.6%)	16 (41%)	16 (35.6%)	17 (34.7%)	15 (35.5%)

Figure G.5: The 10 most common OpenSP diagnostics

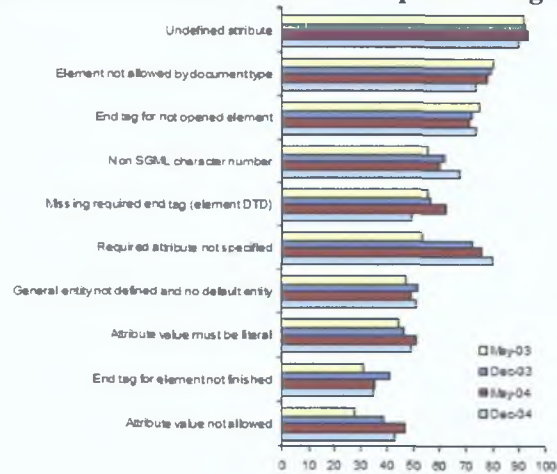


Table G.11: **Density of OpenSP diagnostics**

	May 2003	Dec 2003	May 2004	Dec 2004	Average
Web sites considered for HTML defects analysis	36	39	45	49	42.3
Web sites that triggered 0 distinct diagnostics	1 (2.8%)	1 (2.6%)	1 (2.2%)	1 (2%)	1 (2.4%)
Web sites that triggered 1 distinct diagnostic	1 (2.8%)	1 (2.6%)	1 (2.2%)	2 (4.1%)	1.3 (3%)
Web sites that triggered 2 distinct diagnostics	2 (5.6%)	1 (2.6%)	1 (2.2%)	2 (4.1%)	1.5 (3.6%)
Web sites that triggered 3 distinct diagnostics	1 (2.8%)	1 (2.6%)	2 (4.4%)	2 (4.1%)	1.5 (3.6%)
Web sites that triggered 4 distinct diagnostics	2 (5.6%)	0 (0%)	0 (0%)	1 (2%)	0.8 (1.8%)
Web sites that triggered 5 distinct diagnostics	1 (2.8%)	3 (7.7%)	4 (8.9%)	2 (4.1%)	2.5 (5.9%)
Web sites that triggered 6 distinct diagnostics	1 (2.8%)	1 (2.6%)	1 (2.2%)	3 (6.1%)	1.5 (3.6%)
Web sites that triggered 7 distinct diagnostics	3 (8.3%)	3 (7.7%)	3 (6.7%)	0 (0%)	2.3 (5.3%)
Web sites that triggered 8 distinct diagnostics	3 (8.3%)	1 (2.6%)	2 (4.4%)	4 (8.2%)	2.5 (5.9%)
Web sites that triggered 9 distinct diagnostics	1 (2.8%)	2 (5.1%)	2 (4.4%)	1 (2%)	1.5 (3.6%)
Web sites that triggered 10 distinct diagnostics	5 (13.9%)	6 (15.4%)	5 (11.1%)	7 (14.3%)	5.8 (13.6%)
Web sites that triggered 11 distinct diagnostics	5 (13.9%)	6 (15.4%)	5 (11.1%)	5 (10.2%)	5.3 (12.4%)
Web sites that triggered 12 distinct diagnostics	4 (11.1%)	3 (7.7%)	5 (11.1%)	6 (12.2%)	4.5 (10.7%)
Web sites that triggered 13 distinct diagnostics	2 (5.6%)	1 (2.6%)	3 (6.7%)	3 (6.1%)	2.3 (5.3%)
Web sites that triggered 14 distinct diagnostics	2 (5.6%)	2 (5.1%)	7 (15.6%)	3 (6.1%)	3.5 (8.3%)
Web sites that triggered 15 distinct diagnostics	0 (0%)	4 (10.3%)	1 (2.2%)	4 (8.2%)	2.3 (5.3%)
Web sites that triggered 16 distinct diagnostics	1 (2.8%)	0 (0%)	1 (2.2%)	2 (4.1%)	1 (2.4%)

Table G.11: **Density of OpenSP diagnostics**

	May 2003		Dec 2003		May 2004		Dec 2004		Average	
Web sites that triggered 17 distinct diagnostics	0	(0%)	1	(2.6%)	0	(0%)	0	(0%)	0.3	(0.6%)
Web sites that triggered 18 distinct diagnostics	0	(0%)	1	(2.6%)	0	(0%)	1	(2%)	0.5	(1.2%)
Web sites that triggered 19 distinct diagnostics	0	(0%)	1	(2.6%)	0	(0%)	0	(0%)	0.3	(0.6%)
Web sites that triggered 20 distinct diagnostics	0	(0%)	0	(0%)	1	(2.2%)	0	(0%)	0.3	(0.6%)
Web sites that triggered 21 distinct diagnostics	0	(0%)	0	(0%)	0	(0%)	0	(0%)	0	(0%)
Web sites that triggered 22 distinct diagnostics	1	(2.8%)	0	(0%)	0	(0%)	0	(0%)	0.3	(0.6%)

Figure G.6: **Density of OpenSP diagnostics**



# Appendix H

## Results of surveys conducted on the web sample of UK web sites (May 2003–December 2004)

### H.1 Web content mirroring process results

Table H.1: Results of the web content sampling process

	May 2003	Dec 2003	May 2004	Dec 2004	Average
Data amount retrieved	552 MB	527 MB	519 MB	500 MB	524 MB
Web pages considered for mirroring	67,598	62,491	60,440	57,022	61,887.8
Web pages correctly retrieved (size>0 and no retrieval errors)	59,248 (87.6%)	54,135 (86.6%)	52,260 (86.5%)	48,726 (85.5%)	53,592.3 (86.6%)
Web pages qualified for conformance investigation	45,857 (67.8%)	42,189 (67.5%)	40,769 (67.5%)	38,132 (66.9%)	41,736.8 (67.4%)
Web sites qualified for conformance investigation	2,380 (41.7%)	2,269 (39.8%)	2,243 (39.3%)	2,142 (37.6%)	2,258.5 (39.6%)

Table H.2: Details regarding the web sites that didn't qualify for investigations

	May 2003	Dec 2003	May 2004	Dec 2004	Common	Average
Web sites not qualified for investigations	3,322	3,434	3,459	3,560	2,915	3,443.8
No data retrieved	270 (8.1%)	417 (12.1%)	534 (15.4%)	668 (18.8%)	138 (4.7%)	472.3 (13.7%)
Only the main page retrieved (size>0)	1,669 (50.2%)	1,770 (51.5%)	1,749 (50.6%)	1,815 (51%)	1,260 (43.2%)	1,750.8 (50.8%)
Less than 3 pages (2) and at least 100 KB retrieved	4 (0.1%)	3 (0.1%)	5 (0.1%)	4 (0.1%)	1 (0%)	4 (0.1%)
Less than 100 KB and at least 3 pages retrieved	1,211 (36.5%)	1,084 (31.6%)	1,004 (29%)	926 (26%)	675 (23.2%)	1,056.3 (30.7%)
Less than 3 pages (2) and less than 100 KB (but more than 0) retrieved	168 (5.1%)	158 (4.6%)	167 (4.8%)	147 (4.1%)	73 (2.5%)	160 (4.6%)

## H.2 WCAG 1.0 conformance investigation results

Table H.3: Details regarding Bobby executions

	May 2003	Dec 2003	May 2004	Dec 2004	Average
Web sites considered by Bobby	2,380	2,269	2,243	2,142	2,258.5
Bobby abnormally terminated	137 (5.8%)	133 (5.9%)	123 (5.5%)	113 (5.3%)	126.5 (5.6%)
Bobby "locked up"	92 (3.9%)	76 (3.3%)	83 (3.7%)	101 (4.7%)	88 (3.9%)
Bobby completed successfully	2,151 (90.4%)	2,059 (90.7%)	2,036 (90.8%)	1,928 (90%)	2,043.5 (90.5%)

Table H.4: Bobby Priority 1 diagnostics triggered during the investigation

ID		May 2003	Dec 2003	May 2004	Dec 2004	Average
g9	Provide alternative text for all images	1,989 (92.5%)	1,896 (92.1%)	1,840 (90.4%)	1,685 (87.4%)	1,852.5 (90.6%)
g39	Give each frame a title	579 (26.9%)	511 (24.8%)	491 (24.1%)	421 (21.8%)	500.5 (24.4%)
g38	Each FRAME must reference an HTML file	548 (25.5%)	477 (23.2%)	452 (22.2%)	378 (19.6%)	463.8 (22.6%)
g240	Provide alternative text for all image map hot-spots	429 (19.9%)	401 (19.5%)	372 (18.3%)	307 (15.9%)	377.3 (18.4%)
g10	Provide alternative text for all image-type buttons in forms	183 (8.5%)	170 (8.3%)	171 (8.4%)	149 (7.7%)	168.3 (8.2%)
g21	Provide alternative text for each applet	158 (7.3%)	134 (6.5%)	116 (5.7%)	98 (5.1%)	126.5 (6.2%)
g20	Provide alternative content for each OBJECT	5 (0.2%)	3 (0.1%)	2 (0.1%)	4 (0.2%)	3.5 (0.2%)

Figure H.1: Bobby Priority 1 diagnostics

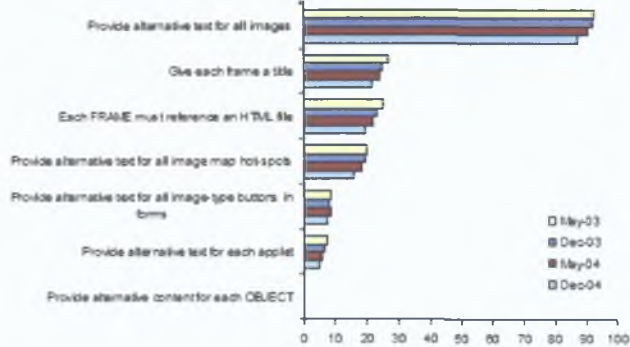


Table H.5: Density of Bobby Priority 1 diagnostics

	May 2003	Dec 2003	May 2004	Dec 2004	Average
Web sites for which Bobby completed successfully	2,151	2,059	2,036	1,928	2,043.5
Web sites for which were triggered 0 distinct diagnostic	119 (5.5%)	123 (6%)	157 (7.7%)	191 (9.9%)	147.5 (7.3%)
Web sites for which were triggered 1 distinct diagnostic	1,021 (47.5%)	1,008 (49%)	991 (48.7%)	972 (50.4%)	998 (48.9%)
Web sites for which were triggered 2 distinct diagnostic	415 (19.3%)	400 (19.4%)	388 (19.1%)	354 (18.4%)	389.3 (19%)
Web sites for which were triggered 3 distinct diagnostics	377 (17.5%)	352 (17.1%)	344 (16.9%)	294 (15.2%)	341.8 (16.7%)
Web sites for which were triggered 4 distinct diagnostics	186 (8.6%)	152 (7.4%)	135 (6.6%)	105 (5.4%)	144.5 (7%)
Web sites for which were triggered 5 distinct diagnostics	33 (1.5%)	24 (1.2%)	21 (1%)	12 (0.6%)	22.5 (1.1%)

Figure H.2: Density of Bobby Priority 1 diagnostics

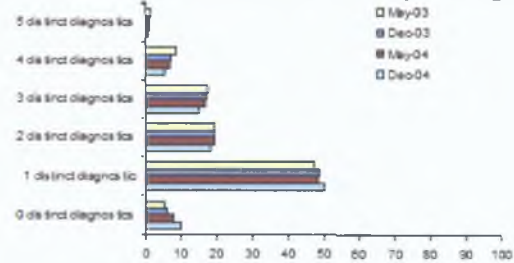




Table H.6: Bobby Priority 2 diagnostics triggered during the investigation

ID		May 2003	Dec 2003	May 2004	Dec 2004	Average
g104	Use relative sizing and positioning (% value) rather than absolute (pixels)	2,113 (98.2%)	2,020 (98.1%)	1,983 (97.4%)	1,852 (96.1%)	1,992 (97.4%)
g271	Use a public text identifier in a DOCTYPE statement	1,775 (82.5%)	1,631 (79.2%)	1,553 (76.3%)	1,390 (72.1%)	1,587.3 (77.5%)
g269	Make sure event handlers do not require use of a mouse	1,404 (65.3%)	1,356 (65.9%)	1,347 (66.2%)	1,225 (63.5%)	1,333 (65.2%)
g41	Explicitly associate form controls and their labels with the LABEL element	1,368 (63.6%)	1,303 (63.3%)	1,269 (62.3%)	1,192 (61.8%)	1,283 (62.8%)
g34	Create link phrases that make sense when read out of context	840 (39.1%)	822 (39.9%)	797 (39.1%)	733 (38%)	798 (39%)
g2	Nest headings properly	298 (13.9%)	263 (12.8%)	243 (11.9%)	255 (13.2%)	264.8 (12.9%)
g273	Include a document TITLE	191 (8.9%)	185 (9%)	186 (9.1%)	203 (10.5%)	191.3 (9.4%)
g5	Avoid scrolling text created with the MARQUEE element	178 (8.3%)	158 (7.7%)	149 (7.3%)	127 (6.6%)	153 (7.5%)
g254	Do not cause a page to redirect to a new URL	62 (2.9%)	53 (2.6%)	51 (2.5%)	33 (1.7%)	49.8 (2.4%)
g37	Provide a NOFRAMES section when using FRAMES	46 (2.1%)	48 (2.3%)	47 (2.3%)	40 (2.1%)	45.3 (2.2%)
g4	Avoid blinking text created with the BLINK element	55 (2.6%)	43 (2.1%)	40 (2%)	38 (2%)	44 (2.1%)
g33	Do not cause a page to refresh automatically	35 (1.6%)	29 (1.4%)	34 (1.7%)	29 (1.5%)	31.8 (1.6%)

Figure H.3: Bobby Priority 2 diagnostics

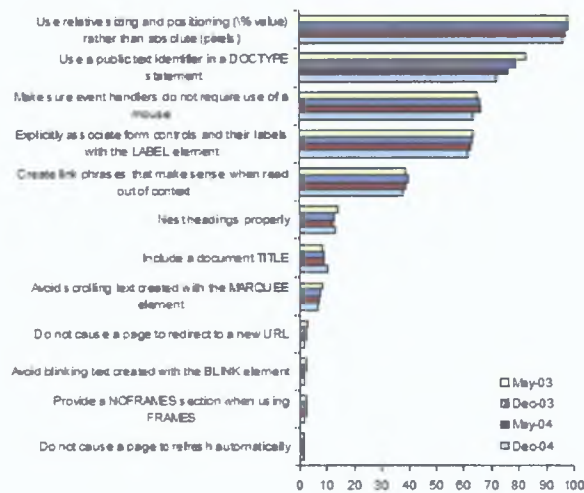


Figure H.4: Density of Bobby Priority 2 diagnostics

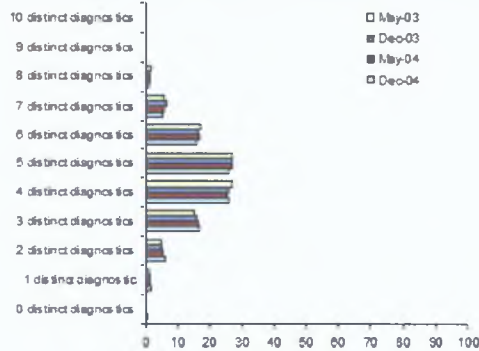


Table H.7: Density of Bobby Priority 2 diagnostics

	May 2003	Dec 2003	May 2004	Dec 2004	Average
Web sites for which Bobby completed successfully	2,151	2,059	2,036	1,928	2,044
Web sites that triggered 0 distinct diagnostics	4 (0.2%)	4 (0.2%)	6 (0.3%)	10 (0.5%)	6 (0.3%)
Web sites that triggered 1 distinct diagnostic	22 (1%)	24 (1.2%)	24 (1.2%)	33 (1.7%)	26 (1.3%)
Web sites that triggered 2 distinct diagnostics	100 (4.6%)	99 (4.8%)	113 (5.6%)	115 (6%)	107 (5.2%)
Web sites that triggered 3 distinct diagnostics	329 (15.3%)	328 (15.9%)	336 (16.5%)	324 (16.8%)	329 (16.1%)
Web sites that triggered 4 distinct diagnostics	576 (26.8%)	535 (26%)	522 (25.6%)	501 (26%)	534 (26.1%)
Web sites that triggered 5 distinct diagnostics	577 (26.8%)	562 (27.3%)	548 (26.9%)	502 (26%)	547 (26.8%)
Web sites that triggered 6 distinct diagnostics	374 (17.4%)	339 (16.5%)	342 (16.8%)	312 (16.2%)	342 (16.7%)
Web sites that triggered 7 distinct diagnostics	125 (5.8%)	134 (6.5%)	115 (5.6%)	105 (5.4%)	120 (5.9%)
Web sites that triggered 8 distinct diagnostics	34 (1.6%)	28 (1.4%)	24 (1.2%)	20 (1%)	27 (1.3%)
Web sites that triggered 9 distinct diagnostics	9 (0.4%)	5 (0.2%)	5 (0.2%)	5 (0.3%)	6 (0.3%)
Web sites that triggered 10 distinct diagnostics	1 (0%)	1 (0%)	1 (0%)	1 (0.1%)	1 (0%)

### H.3 HTML technical standards conformance investigation results

Table H.8: Details regarding OpenSP executions

	May 2003	Dec 2003	May 2004	Dec 2004	Average
Web sites processed by OpenSP	2,380	2,269	2,243	2,142	2,258.5
Web sites where all the web pages had usable document type information	35 (1.5%)	50 (2.2%)	52 (2.3%)	60 (2.8%)	49.3 (2.2%)
Web sites considered for HTML defects analysis	663 (27.9%)	720 (31.7%)	792 (35.3%)	904 (42.2%)	769.8 (34.1%)

Table H.9: Document Type Declaration in web pages considered by OpenSP

	May 2003	Dec 2003	May 2004	Dec 2004	Average
Web pages processed by OpenSP	45,857	42,189	40,769	38,132	41,736.8
No document type information	34,564 (75.4%)	30,528 (72.4%)	28,023 (68.7%)	23,637 (62%)	29,188 (69.9%)
Incorrect document type information	965 (2.1%)	873 (2.1%)	843 (2.1%)	796 (2.1%)	869.3 (2.1%)
Usable document type information	9,562 (20.9%)	10,192 (24.2%)	11,409 (28%)	13,209 (34.6%)	11,093 (26.6%)
Considered for HTML defects analysis (in web sites with at least 3 web pages and 100 KB of data with usable document type information)	9,291 (20.3%)	9,916 (23.5%)	11,146 (27.3%)	12,980 (34%)	10,833.3 (26%)

Table H.10: The 10 most common OpenSP diagnostics triggered in the investigation

ID		May 2003	Dec 2003	May 2004	Dec 2004	Average
108	Undefined attribute	600 (90.5%)	631 (87.6%)	687 (86.7%)	713 (78.9%)	658 (85.9%)
127	Required attribute not specified	496 (74.8%)	560 (77.8%)	605 (76.4%)	634 (70.1%)	574 (74.8%)
64	Element not allowed by document type	509 (76.8%)	520 (72.2%)	559 (70.6%)	584 (64.6%)	543 (71%)
79	End tag for not opened element	487 (73.5%)	506 (70.3%)	539 (68.1%)	563 (62.3%)	524 (68.5%)
25	General entity not defined and no default entity	326 (49.2%)	349 (48.5%)	395 (49.9%)	428 (47.3%)	375 (48.7%)
68	Missing required end tag (element DTD)	351 (52.9%)	342 (47.5%)	362 (45.7%)	366 (40.5%)	355 (46.7%)
139	Non SGML character number	270 (40.7%)	285 (39.6%)	332 (41.9%)	362 (40%)	312 (40.6%)
131	Attribute value not allowed	261 (39.4%)	282 (39.2%)	285 (36%)	290 (32.1%)	280 (36.6%)
73	End tag for element not finished	254 (38.3%)	270 (37.5%)	285 (36%)	304 (33.6%)	278 (36.4%)
82	Attribute value must be literal	251 (37.9%)	261 (36.3%)	268 (33.8%)	255 (28.2%)	259 (34%)

Figure H.5: The 10 most common OpenSP diagnostics

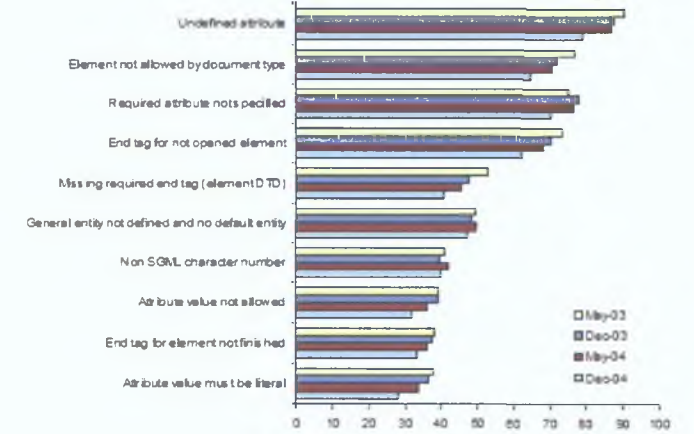
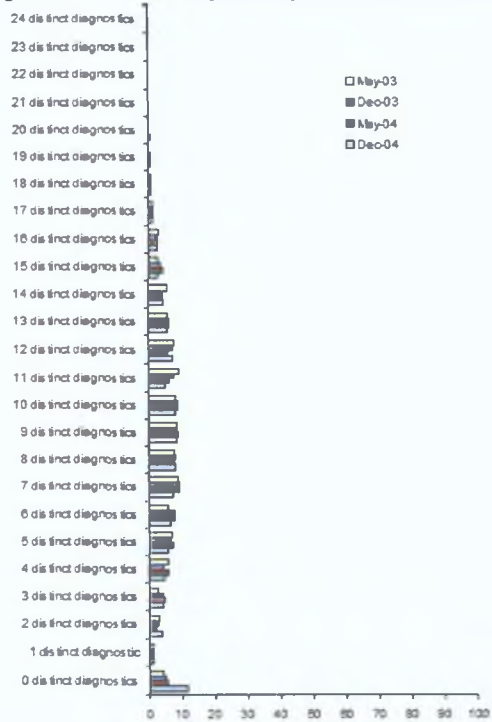


Table H.11: **Density of OpenSP diagnostics**

	May 2003	Dec 2003	May 2004	Dec 2004	Average
Web sites considered for further analysis	663	720	792	904	769.8
Web sites that triggered 0 distinct diagnostics	29 (4.4%)	37 (5.1%)	41 (5.2%)	104 (11.5%)	52.8 (6.9%)
Web sites that triggered 1 distinct diagnostic	8 (1.2%)	8 (1.1%)	11 (1.4%)	10 (1.1%)	9.3 (1.2%)
Web sites that triggered 2 distinct diagnostics	20 (3%)	17 (2.4%)	14 (1.8%)	34 (3.8%)	21.3 (2.8%)
Web sites that triggered 3 distinct diagnostics	19 (2.9%)	29 (4%)	36 (4.5%)	39 (4.3%)	30.8 (4%)
Web sites that triggered 4 distinct diagnostics	37 (5.6%)	32 (4.4%)	45 (5.7%)	43 (4.8%)	39.3 (5.1%)
Web sites that triggered 5 distinct diagnostics	46 (6.9%)	48 (6.7%)	56 (7.1%)	50 (5.5%)	50 (6.5%)
Web sites that triggered 6 distinct diagnostics	40 (6%)	55 (7.6%)	61 (7.7%)	60 (6.6%)	54 (7%)
Web sites that triggered 7 distinct diagnostics	58 (8.7%)	67 (9.3%)	73 (9.2%)	65 (7.2%)	65.8 (8.5%)
Web sites that triggered 8 distinct diagnostics	51 (7.7%)	59 (8.2%)	62 (7.8%)	73 (8.1%)	61.3 (8%)
Web sites that triggered 9 distinct diagnostics	56 (8.4%)	60 (8.3%)	69 (8.7%)	76 (8.4%)	65.3 (8.5%)
Web sites that triggered 10 distinct diagnostics	54 (8.1%)	63 (8.8%)	68 (8.6%)	72 (8%)	64.3 (8.3%)
Web sites that triggered 11 distinct diagnostics	60 (9%)	55 (7.6%)	50 (6.3%)	44 (4.9%)	52.3 (6.8%)
Web sites that triggered 12 distinct diagnostics	52 (7.8%)	54 (7.5%)	47 (5.9%)	64 (7.1%)	54.3 (7%)
Web sites that triggered 13 distinct diagnostics	37 (5.6%)	44 (6.1%)	50 (6.3%)	50 (5.5%)	45.3 (5.9%)
Web sites that triggered 14 distinct diagnostics	38 (5.7%)	32 (4.4%)	34 (4.3%)	42 (4.6%)	36.5 (4.7%)
Web sites that triggered 15 distinct diagnostics	19 (2.9%)	24 (3.3%)	35 (4.4%)	23 (2.5%)	25.3 (3.3%)
Web sites that triggered 16 distinct diagnostics	20 (3%)	17 (2.4%)	19 (2.4%)	25 (2.8%)	20.3 (2.6%)

Web sites that triggered 17 distinct diagnostics	8 (1.2%)	8 (1.1%)	9 (1.1%)	11 (1.2%)	9 (1.2%)
Web sites that triggered 18 distinct diagnostics	7 (1.1%)	4 (0.6%)	6 (0.8%)	7 (0.8%)	6 (0.8%)
Web sites that triggered 19 distinct diagnostics	2 (0.3%)	5 (0.7%)	4 (0.5%)	5 (0.6%)	4 (0.5%)
Web sites that triggered 20 distinct diagnostics	1 (0.2%)	2 (0.3%)	1 (0.1%)	5 (0.6%)	2.3 (0.3%)
Web sites that triggered 21 distinct diagnostics	0 (0%)	0 (0%)	1 (0.1%)	0 (0%)	0.3 (0%)
Web sites that triggered 22 distinct diagnostics	1 (0.2%)	0 (0%)	0 (0%)	0 (0%)	0.3 (0%)
Web sites that triggered 23 distinct diagnostics	0 (0%)	0 (0%)	0 (0%)	2 (0.2%)	0.5 (0.1%)
Web sites that triggered 24 distinct diagnostics	0 (0%)	0 (0%)	0 (0%)	0 (0%)	0 (0%)

Figure H.6: Density of OpenSP diagnostics





# **Appendix I**

## **Results of surveys conducted on the web sample of French web sites (May 2003–December 2004)**

### **I.1 Web content mirroring process results**

Table I.1: Results of the web content sampling process

	May 2003	Dec 2003	May 2004	Dec 2004	Average
Data amount retrieved	167 MB	162 MB	157 MB	145 MB	158 MB
Web pages considered for mirroring	22,319	20,406	19,148	17,056	19,732.3
Web pages correctly retrieved (size>0 and no retrieval errors)	19,727 (88.4%)	17,956 (88%)	16,388 (85.6%)	14,364 (84.2%)	17,108.8 (86.7%)
Web pages in web sites qualified for conformance investigations	16,312 (73.1%)	14,874 (72.9%)	13,461 (70.3%)	11,644 (68.3%)	14,072.8 (71.3%)
Web sites qualified for conformance investigations	747 (48.3%)	722 (46.7%)	698 (45.2%)	640 (41.4%)	701.8 (45.4%)

Table I.2: Details regarding the web sites that didn't qualify for investigations

	May 2003	Dec 2003	May 2004	Dec 2004	Common	Average
Web sites not qualified for investigations	798	823	847	905	638	843
No data retrieved	106 (13.3%)	124 (15.1%)	178 (21%)	270 (29.8%)	51 (8%)	170 (20.1%)
Only the main page retrieved (size>0)	328 (41.1%)	358 (43.5%)	361 (42.6%)	362 (40%)	214 (33.5%)	352 (41.8%)
Less than 3 pages (2) and at least 100 KB retrieved	4 (0.5%)	3 (0.4%)	1 (0.1%)	0 (0%)	0 (0%)	2 (0.2%)
Less than 100 KB and at least 3 pages retrieved	301 (37.7%)	285 (34.6%)	258 (30.5%)	236 (26.1%)	144 (22.6%)	270 (32%)
Less than 3 pages (2) and less than 100 KB (but more than 0) retrieved	59 (7.4%)	53 (6.4%)	45 (5.3%)	37 (4.1%)	14 (2.2%)	49 (5.8%)

## I.2 WCAG 1.0 conformance investigation results

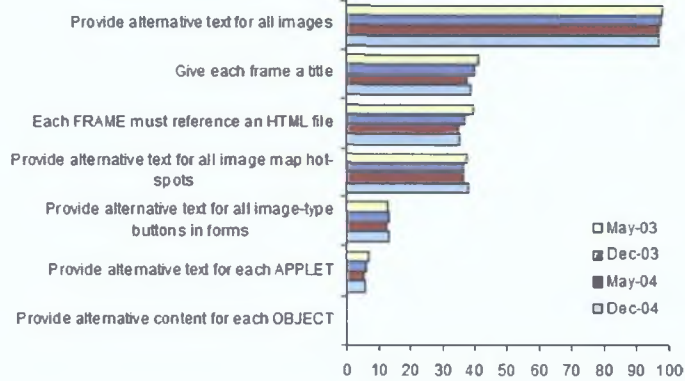
Table I.3: Details regarding Bobby executions

	May 2003	Dec 2003	May 2004	Dec 2004	Average
Web sites considered by Bobby	747	722	698	640	702
Bobby abnormally terminated	63 (8.4%)	51 (7.1%)	51 (7.3%)	40 (6.3%)	51 (7.3%)
Bobby “locked up”	45 (6%)	28 (3.9%)	25 (3.6%)	52 (8.1%)	38 (5.3%)
Bobby completed successfully	639 (85.5%)	643 (89.1%)	622 (89.1%)	548 (85.6%)	613 (87.4%)

Table I.4: Bobby Priority 1 diagnostics triggered during the investigation

ID		May 2003	Dec 2003	May 2004	Dec 2004	Average
g9	Provide alternative text for all images	625 (97.8%)	627 (97.5%)	603 (96.9%)	530 (96.7%)	596.3 (97.2%)
g39	Give each frame a title	263 (41.2%)	257 (40%)	235 (37.8%)	211 (38.5%)	241.5 (39.4%)
g240	Provide alternative text for all image map hot-spots	241 (37.7%)	235 (36.5%)	227 (36.5%)	209 (38.1%)	228 (37.2%)
g38	Each FRAME must reference an HTML file	251 (39.3%)	238 (37%)	217 (34.9%)	194 (35.4%)	225 (36.6%)
g10	Provide alternative text for all image-type buttons in forms	82 (12.8%)	85 (13.2%)	79 (12.7%)	74 (13.5%)	80 (13.1%)
g21	Provide alternative text for each APPLET	45 (7%)	38 (5.9%)	34 (5.5%)	32 (5.8%)	37.3 (6.1%)
g20	Provide alternative content for each OBJECT	3 (0.5%)	3 (0.5%)	3 (0.5%)	2 (0.4%)	2.8 (0.4%)

**Figure I.1: Bobby Priority 1 diagnostics**



**Table I.5: Density of Bobby Priority 1 diagnostics**

	May 2003	Dec 2003	May 2004	Dec 2004	Average
Web sites for which Bobby completed successfully	639	643	622	548	613
Web sites for which were triggered 0 distinct diagnostic	9 (1.4%)	10 (1.6%)	12 (1.9%)	8 (1.5%)	9.8 (1.6%)
Web sites for which were triggered 1 distinct diagnostic	199 (31.1%)	204 (31.7%)	211 (33.9%)	171 (31.2%)	196.3 (32%)
Web sites for which were triggered 2 distinct diagnostic	155 (24.3%)	166 (25.8%)	156 (25.1%)	152 (27.7%)	157.3 (25.7%)
Web sites for which were triggered 3 distinct diagnostics	135 (21.1%)	131 (20.4%)	119 (19.1%)	112 (20.4%)	124.3 (20.3%)
Web sites for which were triggered 4 distinct diagnostics	110 (17.2%)	107 (16.6%)	102 (16.4%)	84 (15.3%)	100.8 (16.4%)
Web sites for which were triggered 5 distinct diagnostics	30 (4.7%)	24 (3.7%)	22 (3.5%)	21 (3.8%)	24.3 (4%)
Web sites for which were triggered 6 distinct diagnostics	1 (0.2%)	1 (0.2%)	0 (0%)	0 (0%)	0.5 (0.1%)

Figure I.2: Density of Bobby Priority 1 diagnostics

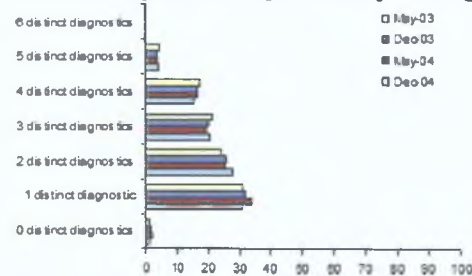


Figure I.3: Bobby Priority 2 diagnostics

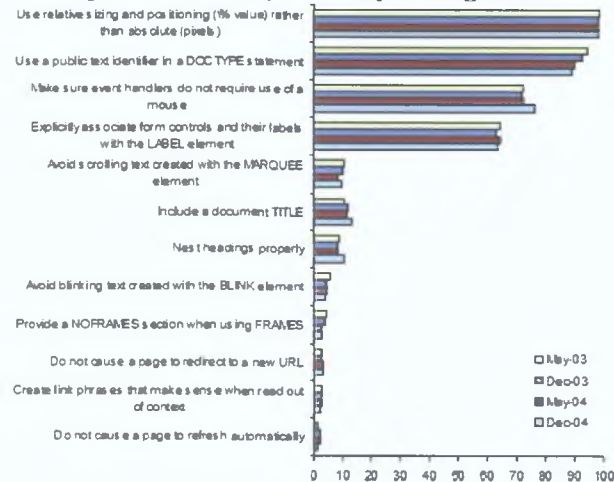


Figure I.4: Density of Bobby Priority 2 diagnostics

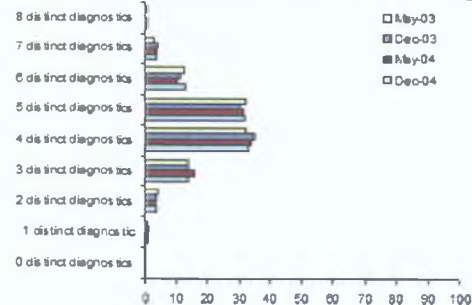


Table I.6: Bobby Priority 2 diagnostics triggered during the investigation

ID		May 2003	Dec 2003	May 2004	Dec 2004	Average
g104	Use relative sizing and positioning (% value) rather than absolute (pixels)	627 (98.1%)	630 (98%)	609 (97.9%)	537 (98%)	600.8 (98%)
g271	Use a public text identifier in a DOCTYPE statement	602 (94.2%)	596 (92.7%)	560 (90%)	490 (89.4%)	562 (91.6%)
g269	Make sure event handlers do not require use of a mouse	464 (72.6%)	464 (72.2%)	452 (72.7%)	419 (76.5%)	449.8 (73.5%)
g41	Explicitly associate form controls and their labels with the LABEL element	412 (64.5%)	407 (63.3%)	401 (64.5%)	349 (63.7%)	392.3 (64%)
g4	Avoid blinking text created with the BLINK element	37 (5.8%)	29 (4.5%)	27 (4.3%)	349 (63.7%)	110.5 (19.6%)
g273	Include a document TITLE	68 (10.6%)	77 (12%)	71 (11.4%)	72 (13.1%)	72 (11.8%)
g5	Avoid scrolling text created with the MARQUEE element	69 (10.8%)	65 (10.1%)	52 (8.4%)	52 (9.5%)	59.5 (9.7%)
g2	Nest headings properly	56 (8.8%)	55 (8.6%)	54 (8.7%)	59 (10.8%)	56 (9.2%)
g37	Provide a NOFRAMES section when using FRAMES	30 (4.7%)	25 (3.9%)	16 (2.6%)	14 (2.6%)	21.3 (3.4%)
g254	Do not cause a page to redirect to a new URL	19 (3%)	16 (2.5%)	19 (3.1%)	17 (3.1%)	17.8 (2.9%)
g34	Create link phrases that make sense when read out of context	15 (2.3%)	15 (2.3%)	17 (2.7%)	12 (2.2%)	14.8 (2.4%)
g33	Do not cause a page to refresh automatically	9 (1.4%)	13 (2%)	14 (2.3%)	7 (1.3%)	10.8 (1.7%)

Table I.7: Density of Bobby Priority 2 diagnostics

	May 2003	Dec 2003	May 2004	Dec 2004	Average
Web sites with Bobby completed successfully	639	643	622	548	613
Web sites that triggered 0 distinct diagnostics	0 (0%)	1 (0.2%)	0 (0%)	0 (0%)	0.3 (0%)
Web sites that triggered 1 distinct diagnostic	7 (1.1%)	8 (1.2%)	5 (0.8%)	3 (0.5%)	5.8 (0.9%)
Web sites that triggered 2 distinct diagnostics	26 (4.1%)	23 (3.6%)	21 (3.4%)	19 (3.5%)	22.3 (3.6%)
Web sites that triggered 3 distinct diagnostics	87 (13.6%)	89 (13.8%)	98 (15.8%)	76 (13.9%)	87.5 (14.3%)
Web sites that triggered 4 distinct diagnostics	207 (32.4%)	226 (35.1%)	210 (33.8%)	182 (33.2%)	206.3 (33.6%)
Web sites that triggered 5 distinct diagnostics	207 (32.4%)	194 (30.2%)	196 (31.5%)	175 (31.9%)	193 (31.5%)
Web sites that triggered 6 distinct diagnostics	80 (12.5%)	74 (11.5%)	64 (10.3%)	70 (12.8%)	72 (11.7%)
Web sites that triggered 7 distinct diagnostics	19 (3%)	25 (3.9%)	23 (3.7%)	20 (3.6%)	21.8 (3.5%)
Web sites that triggered 8 distinct diagnostics	6 (0.9%)	3 (0.5%)	5 (0.8%)	3 (0.5%)	4.3 (0.7%)

### I.3 HTML technical standards conformance investigation results

Table I.8: Details regarding OpenSP executions

	May 2003	Dec 2003	May 2004	Dec 2004	Average
Web sites processed by OpenSP	747	722	698	640	701.8
Web sites where all the web pages had usable document type information	1 (0.1%)	2 (0.3%)	4 (0.6%)	3 (0.5%)	2.5 (0.4%)
Web sites considered for HTML defects analysis	140 (18.7%)	142 (19.7%)	175 (25.1%)	196 (30.6%)	163.3 (23.3%)

Table I.9: Document Type Declaration in web pages considered by OpenSP

	May 2003	Dec 2003	May 2004	Dec 2004	Average
Web pages processed by OpenSP	16,312	14,874	13,461	11,644	14,073
No document type information	13,837 (84.8%)	12,578 (84.6%)	10,954 (81.4%)	9,116 (78.3%)	11,621 (82.6%)
Incorrect document type information	427 (2.6%)	457 (3.1%)	407 (3%)	175 (1.5%)	367 (2.6%)
Usable document type information	1,788 (11%)	1,758 (11.8%)	2,050 (15.2%)	2,324 (20%)	1,980 (14.1%)
Considered for HTML defects analysis (in web sites with at least 3 web pages and 100 KB of data with usable document type information)	1,672 (10.3%)	1,646 (11.1%)	1,934 (14.4%)	2,217 (19.0%)	1,867 (13.3%)



Table I.10: The 10 most common OpenSP diagnostics triggered in the investigation

ID		May 2003	Dec 2003	May 2004	Dec 2004	Average
108	Undefined attribute	116 (82.9%)	117 (82.4%)	142 (81.1%)	171 (87.2%)	136.5 (83.4%)
127	Required attribute not specified	102 (72.9%)	104 (73.2%)	136 (77.7%)	160 (81.6%)	125.5 (76.4%)
64	Element not allowed by document type	101 (72.1%)	99 (69.7%)	123 (70.3%)	151 (77%)	118.5 (72.3%)
79	End tag for not opened element	84 (60%)	86 (60.6%)	103 (58.9%)	118 (60.2%)	97.8 (59.9%)
25	General entity not defined and no default entity	57 (40.7%)	63 (44.4%)	82 (46.9%)	105 (53.6%)	76.8 (46.4%)
139	Non SGML character number	66 (47.1%)	64 (45.1%)	71 (40.6%)	77 (39.3%)	69.5 (43%)
131	Attribute value not allowed	59 (42.1%)	59 (41.5%)	71 (40.6%)	79 (40.3%)	67 (41.1%)
68	Missing required end tag (element DTD)	65 (46.4%)	53 (37.3%)	70 (40%)	77 (39.3%)	66.3 (40.8%)
73	End tag for element not finished	52 (37.1%)	52 (36.6%)	44 (25.1%)	68 (34.7%)	54 (33.4%)
82	Attribute value must be literal	54 (38.6%)	51 (35.9%)	47 (26.9%)	59 (30.1%)	52.8 (32.9%)

Figure I.5: The 10 most common OpenSP diagnostics

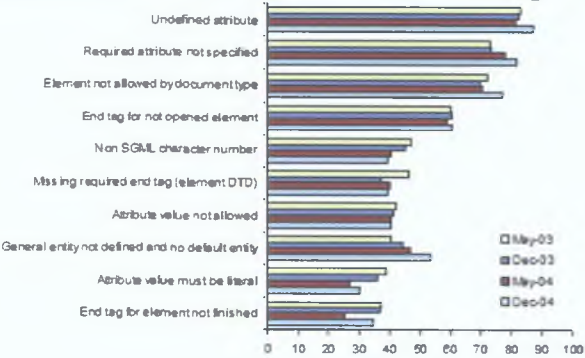


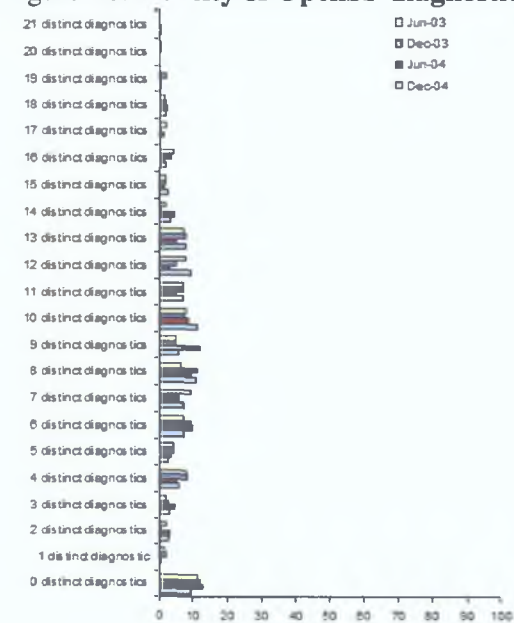
Table 1.11: **Density of OpenSP diagnostics**

	May 2003	Dec 2003	May 2004	Dec 2004	Average
Web sites considered for further analysis	140	142	175	196	163.3
Web sites that triggered 0 distinct diagnostics	16 (11.4%)	17 (12%)	22 (12.6%)	18 (9.2%)	18.3 (11.2%)
Web sites that triggered 1 distinct diagnostic	2 (1.4%)	3 (2.1%)	1 (0.6%)	0 (0%)	1.5 (0.9%)
Web sites that triggered 2 distinct diagnostics	3 (2.1%)	1 (0.7%)	5 (2.9%)	5 (2.6%)	3.5 (2.1%)
Web sites that triggered 3 distinct diagnostics	3 (2.1%)	4 (2.8%)	8 (4.6%)	6 (3.1%)	5.3 (3.2%)
Web sites that triggered 4 distinct diagnostics	11 (7.9%)	12 (8.5%)	9 (5.1%)	11 (5.6%)	10.8 (6.6%)
Web sites that triggered 5 distinct diagnostics	6 (4.3%)	6 (4.2%)	6 (3.4%)	5 (2.6%)	5.8 (3.5%)
Web sites that triggered 6 distinct diagnostics	10 (7.1%)	13 (9.2%)	17 (9.7%)	14 (7.1%)	13.5 (8.3%)
Web sites that triggered 7 distinct diagnostics	13 (9.3%)	8 (5.6%)	10 (5.7%)	14 (7.1%)	11.3 (6.9%)
Web sites that triggered 8 distinct diagnostics	9 (6.4%)	16 (11.3%)	16 (9.1%)	21 (10.7%)	15.5 (9.5%)
Web sites that triggered 9 distinct diagnostics	7 (5%)	7 (4.9%)	21 (12%)	11 (5.6%)	11.5 (7%)
Web sites that triggered 10 distinct diagnostics	11 (7.9%)	10 (7%)	15 (8.6%)	22 (11.2%)	14.5 (8.9%)
Web sites that triggered 11 distinct diagnostics	10 (7.1%)	10 (7%)	9 (5.1%)	14 (7.1%)	10.8 (6.6%)
Web sites that triggered 12 distinct diagnostics	11 (7.9%)	7 (4.9%)	5 (2.9%)	18 (9.2%)	10.3 (6.3%)
Web sites that triggered 13 distinct diagnostics	10 (7.1%)	11 (7.7%)	9 (5.1%)	15 (7.7%)	11.3 (6.9%)
Web sites that triggered 14 distinct diagnostics	3 (2.1%)	1 (0.7%)	8 (4.6%)	7 (3.6%)	4.8 (2.9%)
Web sites that triggered 15 distinct diagnostics	3 (2.1%)	3 (2.1%)	3 (1.7%)	5 (2.6%)	3.5 (2.1%)
Web sites that triggered 16 distinct diagnostics	6 (4.3%)	5 (3.5%)	3 (1.7%)	4 (2%)	4.5 (2.8%)

Table I.11: **Density of OpenSP diagnostics**

	May 2003	Dec 2003	May 2004	Dec 2004	Average
Web sites that triggered 17 distinct diagnostics	3 (2.1%)	1 (0.7%)	2 (1.1%)	0 (0%)	1.5 (0.9%)
Web sites that triggered 18 distinct diagnostics	2 (1.4%)	3 (2.1%)	4 (2.3%)	4 (2%)	3.3 (2%)
Web sites that triggered 19 distinct diagnostics	(0%)	3 (2.1%)	1 (0.6%)	1 (0.5%)	1.3 (0.8%)
Web sites that triggered 20 distinct diagnostics	1 (0.7%)	1 (0.7%)	0 (0%)	0 (0%)	0.5 (0.3%)
Web sites that triggered 20 distinct diagnostics	0 (0%)	0 (0%)	1 (0.6%)	1 (0.5%)	0.5 (0.3%)

Figure I.6: **Density of OpenSP diagnostics**



## **Appendix J**

### **Results of surveys conducted on the web sample of German web sites (May 2003–December 2004)**

#### **J.1 Web content mirroring process results**

Table J.1: Results of the web content sampling process

	May 2003	Dec 2003	May 2004	Dec 2004	Average
Data amount retrieved	377 MB	378 MB	380 MB	371 MB	376 MB
Web pages considered for mirroring	58,278	57,598	56,641	55,037	56,888.5
Web pages correctly retrieved (size>0 and no retrieval errors)	52,825 (90.6%)	51,473 (89.4%)	50,461 (89.1%)	47,806 (86.9%)	50,641.3(89%)
Web pages in web sites qualified for conformance investigations	38,062 (65.3%)	37,974 (65.9%)	37,245 (65.8%)	35,749 (65%)	37,257.3(65.5%)
Web sites qualified for conformance investigations	1,636 (38.5%)	1,649 (38.8%)	1,646 (38.7%)	1,609 (37.9%)	1,635 (38.5%)

Table J.2: Details regarding the web sites that didn't qualify for investigations

	May 2003	Dec 2003	May 2004	Dec 2004	Common	Average
Web sites not qualified for investigations	2,615	2,602	2,605	2,641	2,248	2,615.8
No data retrieved	147 (5.6%)	178 (6.8%)	205 (7.9%)	275 (10.4%)	79 (3.5%)	201.3 (7.7%)
Only the main page retrieved (size>0)	1,159 (44.3%)	1,209 (46.5%)	1,226 (47.1%)	1,277 (48.4%)	914 (40.7%)	1,217.8 (46.6%)
Less than 3 pages (2) and at least 100 KB retrieved	1 (0%)	4 (0.2%)	4 (0.2%)	3 (0.1%)	1 (0%)	3 (0.1%)
Less than 100 KB and at least 3 pages retrieved	1,177 (45%)	1,082 (41.6%)	1,054 (40.5%)	976 (37%)	734 (32.7%)	1,072.3 (41%)
Less than 3 pages (2) and less than 100 KB (but more than 0) retrieved	130 (5%)	128 (4.9%)	115 (4.4%)	110 (4.2%)	55 (2.4%)	120.8 (4.6%)

## J.2 WCAG 1.0 conformance investigation results

Table J.3: Details regarding Bobby executions

	May 2003	Dec 2003	May 2004	Dec 2004	Average
Web sites considered by Bobby	1,636	1,649	1,646	1,609	1,635
Bobby abnormally terminated	101 (6.2%)	102 (6.2%)	102 (6.2%)	94 (5.8%)	99.8 (6.1%)
Bobby "locked up"	90 (5.5%)	75 (4.5%)	66 (4%)	60 (3.7%)	72.8 (4.4%)
Bobby completed successfully	1,444 (88.3%)	1,471 (89.2%)	1,477 (89.7%)	1,455 (90.4%)	1,461.8 (89.4%)

Table J.4: Bobby Priority 1 diagnostics triggered during the investigation

ID		May 2003	Dec 2003	May 2004	Dec 2004	Average
g9	Provide alternative text for all images	1,336 (92.5%)	1,343 (91.3%)	1,339 (90.7%)	1,287 (88.5%)	1326.3 (90.7%)
g39	Give each frame a title	735 (50.9%)	730 (49.6%)	721 (48.8%)	664 (45.6%)	712.5 (48.7%)
g38	Each FRAME must reference an HTML file	726 (50.3%)	715 (48.6%)	706 (47.8%)	659 (45.3%)	701.5 (48.0%)
g240	Provide alternative text for all image map hot-spots	265 (18.4%)	243 (16.5%)	233 (15.8%)	218 (15%)	239.8 (16.4%)
g10	Provide alternative text for all image-type buttons in forms	126 (8.7%)	135 (9.2%)	141 (9.5%)	132 (9.1%)	133.5 (9.1%)
g21	Provide alternative text for each applet	110 (7.6%)	92 (6.3%)	72 (4.9%)	67 (4.6%)	85.3 (5.8%)
g20	Provide alternative content for each OBJECT	3 (0.2%)	3 (0.2%)	4 (0.3%)	5 (0.3%)	3.8 (0.3%)

Figure J.1: Bobby Priority 1 diagnostics

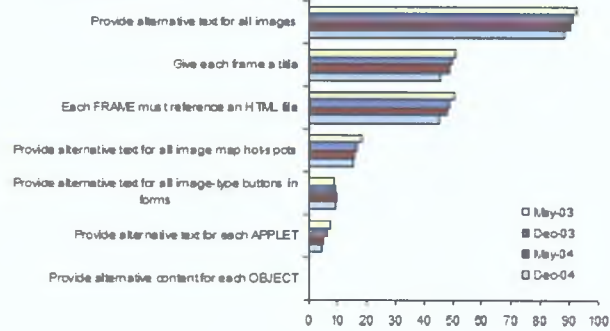


Table J.5: Density of Bobby Priority 1 diagnostics

	May 2003	Dec 2003	May 2004	Dec 2004	Average
Web sites with Bobby completed successfully	1,444	1,471	1,477	1,455	1,461.8
Web sites that triggered 0 distinct diagnostics	66 (4.6%)	69 (4.7%)	69 (4.7%)	101 (6.9%)	76.3 (5.2%)
Web sites that triggered 1 distinct diagnostic	461 (31.9%)	496 (33.7%)	513 (34.7%)	513 (35.3%)	495.8 (33.9%)
Web sites that triggered 2 distinct diagnostics	200 (13.9%)	207 (14.1%)	222 (15%)	214 (14.7%)	210.8 (14.4%)
Web sites that triggered 3 distinct diagnostics	463 (32.1%)	474 (32.2%)	465 (31.5%)	440 (30.2%)	460.5 (31.5%)
Web sites that triggered 4 distinct diagnostics	220 (15.2%)	197 (13.4%)	177 (12%)	165 (11.3%)	189.8 (13%)
Web sites that triggered 5 distinct diagnostics	33 (2.3%)	27 (1.8%)	30 (2%)	21 (1.4%)	27.8 (1.9%)
Web sites that triggered 6 distinct diagnostics	1 (0.1%)	1 (0.1%)	1 (0.1%)	1 (0.1%)	1 (0.1%)

Figure J.2: Density of Bobby Priority 1 diagnostics

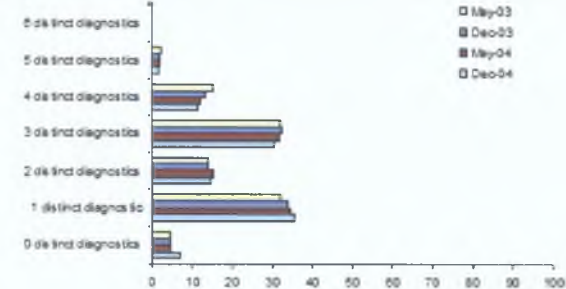


Figure J.3: Bobby Priority 2 diagnostics

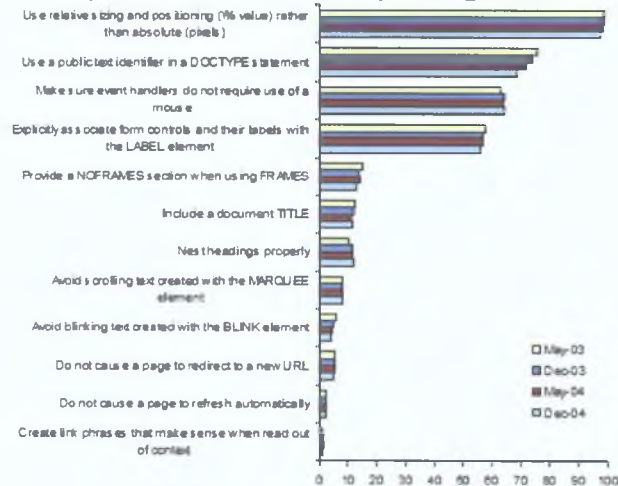


Figure J.4: Density of Bobby Priority 2 diagnostics

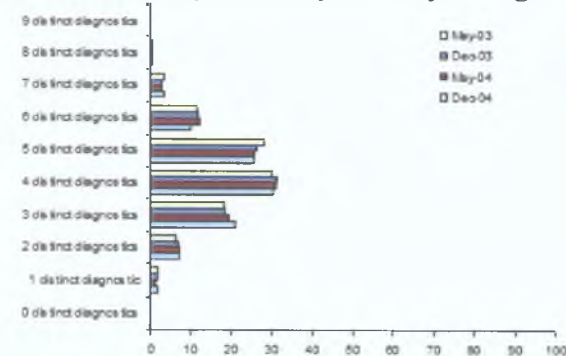




Table J.6: Bobby Priority 2 diagnostics triggered during the investigation

ID		May 2003	Dec 2003	May 2004	Dec 2004	Average
g104	Use relative sizing and positioning (% value) rather than absolute (pixels)	1,429 (99%)	1,454 (98.8%)	1,454 (98.4%)	1,418 (96%)	1438.8 (98.1%)
g271	Use a public text identifier in a DOCTYPE statement	1,093 (75.7%)	1,085 (73.8%)	1,067 (72.2%)	1,001 (67.8%)	1061.5 (72.4%)
g269	Make sure event handlers do not require use of a mouse	915 (63.4%)	948 (64.4%)	942 (63.8%)	938 (63.5%)	935.8 (63.8%)
g41	Explicitly associate form controls and their labels with the LABEL element	836 (57.9%)	836 (56.8%)	838 (56.7%)	814 (55.1%)	831 (56.6%)
g37	Provide a NOFRAMES section when using FRAMES	219 (15.2%)	207 (14.1%)	212 (14.4%)	187 (12.7%)	206.3 (14.1%)
g273	Include a document TITLE	182 (12.6%)	177 (12%)	162 (11%)	165 (11.2%)	171.5 (11.7%)
g2	Nest headings properly	150 (10.4%)	167 (11.4%)	167 (11.3%)	169 (11.4%)	163.3 (11.1%)
g5	Avoid scrolling text created with the MARQUEE element	119 (8.2%)	114 (7.7%)	115 (7.8%)	116 (7.9%)	116 (7.9%)
g4	Avoid blinking text created with the BLINK element	80 (5.5%)	73 (5%)	63 (4.3%)	58 (3.9%)	68.5 (4.7%)
g254	Do not cause a page to redirect to a new URL	78 (5.4%)	79 (5.4%)	80 (5.4%)	75 (5.1%)	78 (5.3%)
g33	Do not cause a page to refresh automatically	37 (2.6%)	32 (2.2%)	32 (2.2%)	29 (2%)	32.5 (2.2%)
g34	Create link phrases that make sense when read out of context	18 (1.2%)	19 (1.3%)	21 (1.4%)	15 (1%)	18.3 (1.2%)

Table J.7: Density of Bobby Priority 2 diagnostics

	May 2003	Dec 2003	May 2004	Dec 2004	Average
Web sites for which Bobby completed successfully	1,444	1,471	1,477	1,455	1,461.8
Web sites for which were triggered 0 distinct diagnostic	0 (0%)	0 (0%)	1 (0.1%)	2 (0.1%)	0.8 (0.1%)
Web sites that triggered 1 distinct diagnostic	25 (1.7%)	25 (1.7%)	20 (1.4%)	29 (2%)	24.8 (1.7%)
Web sites that triggered 2 distinct diagnostics	92 (6.4%)	99 (6.7%)	104 (7%)	104 (7.1%)	99.8 (6.8%)
Web sites that triggered 3 distinct diagnostics	265 (18.4%)	273 (18.6%)	285 (19.3%)	301 (20.7%)	281 (19.2%)
Web sites that triggered 4 distinct diagnostics	431 (29.8%)	459 (31.2%)	456 (30.9%)	442 (30.4%)	447 (30.6%)
Web sites that triggered 5 distinct diagnostics	406 (28.1%)	387 (26.3%)	379 (25.7%)	372 (25.6%)	386 (26.4%)
Web sites that triggered 6 distinct diagnostics	167 (11.6%)	176 (12%)	181 (12.3%)	148 (10.2%)	168 (11.5%)
Web sites that triggered 7 distinct diagnostics	47 (3.3%)	41 (2.8%)	42 (2.8%)	49 (3.4%)	44.8 (3.1%)
Web sites that triggered 8 distinct diagnostics	9 (0.6%)	10 (0.7%)	9 (0.6%)	8 (0.5%)	9 (0.6%)
Web sites that triggered 9 distinct diagnostics	2 (0.1%)	1 (0.1%)	0 (0%)	0 (0%)	0.8 (0.1%)

### J.3 HTML technical standards conformance investigation results

Table J.8: Details regarding OpenSP executions

	May 2003	Dec 2003	May 2004	Dec 2004	Average
Web sites processed by OpenSP	1,636	1,649	1,646	1,609	1,635
Web sites where all the web pages had usable document type information	52 (3.2%)	52 (3.2%)	54 (3.3%)	55 (3.4%)	53 (3.3%)
Web sites considered for HTML defects analysis	603 (36.9%)	647 (39.2%)	706 (42.9%)	734 (45.6%)	673 (41.1%)

Table J.9: Document Type Declaration in web pages considered by OpenSP

	May 2003	Dec 2003	May 2004	Dec 2004	Average
Web pages processed by OpenSP	38,062	37,974	37,245	35,749	37,257.5
No document type information	24,258 (63.7%)	23,422 (61.7%)	22,382 (60.1%)	20,456 (57.2%)	22,629.5(60.7%)
Incorrect document type information	2,692 (7.1%)	2,411 (6.3%)	2,024 (5.4%)	1,903 (5.3%)	2,257.5 (6.1%)
Usable document type information	10,681 (28.1%)	11,726 (30.9%)	12,502 (33.6%)	13,087 (36.6%)	11,999 (32.2%)
Considered for HTML defects analysis (in web sites with at least 3 web pages and 100 KB of data with usable document type information)	10,431 (27.4%)	11,474 (30.2%)	12,270 (32.9%)	12,853 (36%)	11,757 (31.6%)

Table J.10: The 10 most common OpenSP diagnostics triggered in the investigation

ID		May 2003	Dec 2003	May 2004	Dec 2004	Average
108	Undeclared attribute	549 (91%)	588 (90.9%)	633 (89.7%)	645 (87.9%)	603.8 (89.9%)
64	Element not allowed by document type	486 (80.6%)	511 (79%)	548 (77.6%)	532 (72.5%)	519.3 (77.4%)
127	Required attribute not specified	463 (76.8%)	515 (79.6%)	567 (80.3%)	589 (80.2%)	533.5 (79.2%)
79	End tag for not opened element	416 (69%)	446 (68.9%)	479 (67.8%)	487 (66.3%)	457 (68%)
68	Missing required end tag (element DTD)	327 (54.2%)	344 (53.2%)	359 (50.8%)	350 (47.7%)	345 (51.5%)
73	End tag for element not finished	276 (45.8%)	294 (45.4%)	302 (42.8%)	300 (40.9%)	293 (43.7%)
25	General entity not defined and no default entity	269 (44.6%)	287 (44.4%)	309 (43.8%)	319 (43.5%)	296 (44%)
139	Non SGML character number	268 (44.4%)	313 (48.4%)	332 (47%)	347 (47.3%)	315 (46.8%)
131	Attribute value not allowed	217 (36%)	230 (35.5%)	256 (36.3%)	246 (33.5%)	237.3 (35.3%)
82	Attribute value must be literal	212 (35.2%)	222 (34.3%)	243 (34.4%)	245 (33.4%)	230.5 (34.3%)

Figure J.5: The 10 most common OpenSP diagnostics

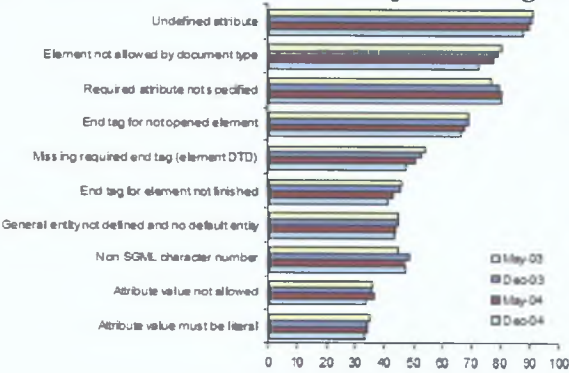


Table J.11: **Density of OpenSP diagnostics**

	May 2003	Dec 2003	May 2004	Dec 2004	Average
Web sites considered for further analysis	603	647	706	734	672.5
Web sites that triggered 0 distinct diagnostics	29 (4.8%)	26 (4%)	29 (4.1%)	33 (4.5%)	29.3 (4.3%)
Web sites that triggered 1 distinct diagnostic	9 (1.5%)	6 (0.9%)	6 (0.8%)	12 (1.6%)	8.3 (1.2%)
Web sites that triggered 2 distinct diagnostics	6 (1%)	10 (1.5%)	11 (1.6%)	21 (2.9%)	12 (1.8%)
Web sites that triggered 3 distinct diagnostics	19 (3.2%)	30 (4.6%)	33 (4.7%)	27 (3.7%)	27.3 (4.1%)
Web sites that triggered 4 distinct diagnostics	21 (3.5%)	28 (4.3%)	32 (4.5%)	37 (5%)	29.5 (4.4%)
Web sites that triggered 5 distinct diagnostics	29 (4.8%)	29 (4.5%)	37 (5.2%)	42 (5.7%)	34.3 (5.1%)
Web sites that triggered 6 distinct diagnostics	44 (7.3%)	47 (7.3%)	53 (7.5%)	52 (7.1%)	49 (7.3%)
Web sites that triggered 7 distinct diagnostics	56 (9.3%)	53 (8.2%)	63 (8.9%)	66 (9%)	59.5 (8.8%)
Web sites that triggered 8 distinct diagnostics	63 (10.4%)	60 (9.3%)	63 (8.9%)	68 (9.3%)	63.5 (9.4%)
Web sites that triggered 9 distinct diagnostics	52 (8.6%)	59 (9.1%)	62 (8.8%)	61 (8.3%)	58.5 (8.7%)
Web sites that triggered 10 distinct diagnostics	49 (8.1%)	63 (9.7%)	57 (8.1%)	45 (6.1%)	53.5 (8%)
Web sites that triggered 11 distinct diagnostics	48 (8%)	53 (8.2%)	68 (9.6%)	73 (9.9%)	60.5 (9%)
Web sites that triggered 12 distinct diagnostics	39 (6.5%)	33 (5.1%)	39 (5.5%)	48 (6.5%)	39.8 (5.9%)
Web sites that triggered 13 distinct diagnostics	43 (7.1%)	46 (7.1%)	40 (5.7%)	45 (6.1%)	43.5 (6.5%)
Web sites that triggered 14 distinct diagnostics	20 (3.3%)	22 (3.4%)	32 (4.5%)	29 (4%)	25.8 (3.8%)
Web sites that triggered 15 distinct diagnostics	22 (3.6%)	20 (3.1%)	21 (3%)	25 (3.4%)	22 (3.3%)
Web sites that triggered 16 distinct diagnostics	22 (3.6%)	26 (4%)	16 (2.3%)	15 (2%)	19.8 (2.9%)

Table J.11: **Density of OpenSP diagnostics**

	May 2003	Dec 2003	May 2004	Dec 2004	Average
Web sites that triggered 17 distinct diagnostics	7 (1.2%)	11 (1.7%)	15 (2.1%)	16 (2.2%)	12.3 (1.8%)
Web sites that triggered 18 distinct diagnostics	10 (1.7%)	6 (0.9%)	14 (2%)	10 (1.4%)	10 (1.5%)
Web sites that triggered 19 distinct diagnostics	8 (1.3%)	8 (1.2%)	5 (0.7%)	2 (0.3%)	5.8 (0.9%)
Web sites that triggered 20 distinct diagnostics	5 (0.8%)	5 (0.8%)	5 (0.7%)	5 (0.7%)	5 (0.7%)
Web sites that triggered 21 distinct diagnostics	1 (0.2%)	5 (0.8%)	3 (0.4%)	1 (0.1%)	2.5 (0.4%)
Web sites that triggered 22 distinct diagnostics	0 (0%)	1 (0.2%)	0 (0%)	0 (0%)	0.3 (0%)
Web sites that triggered 23 distinct diagnostics	1 (0.2%)	0 (0%)	2 (0.3%)	0 (0%)	0.8 (0.1%)
Web sites that triggered 24 distinct diagnostics	0 (0%)	0 (0%)	0 (0%)	1 (0.1%)	0.3 (0%)

Figure J.6: Density of OpenSP diagnostics



# Appendix K

## Results of surveys conducted on the subjective and random web samples of Irish web sites (May 2003)

### K.1 Web content mirroring process results

Table K.1: Results of the web content sampling process

	Subjective	Random
Data amount retrieved	34 MB	29 MB
Web pages considered for mirroring	3,382	3,319
Web pages correctly re-trieved (size>0 and no re-trieval errors)	2,980 (88.1%)	2,817 (84.9%)
Web pages qualified for conformance investigation	2,825 (83.5%)	2,288 (68.9%)
Web sites qualified for conformance investigation	156 (72.9%)	123 (45.2%)



Table K.2: **Details regarding the web sites that didn't qualify for investigations**

	Subjective		Random	
Web sites not qualified for investigations	58		149	
No data retrieved	9	(15.5%)	9	(6%)
Only the main page retrieved (size>0)	31	(53.4%)	91	(61.1%)
Less than 3 pages (2) and at least 100 KB retrieved	0	(0%)	1	(0.7%)
Less than 100 KB and at least 3 pages retrieved	15	(25.9%)	46	(30.9%)
Less than 3 pages (2) and less than 100 KB (but more than 0) retrieved	3	(5.2%)	2	(1.3%)

## K.2 WCAG 1.0 conformance investigation results

Table K.3: Details regarding Bobby executions

	Subjective	Random
Web sites considered by Bobby	156	123
Bobby abnormally terminated	13 (8.3%)	3 (2.4%)
Bobby "locked up"	9 (5.8%)	6 (4.9%)
Bobby completed successfully	134 (85.9%)	114 (92.7%)

Table K.4: Bobby Priority 1 diagnostics triggered during the investigation

ID		Subjective	Random
g9	Provide alternative text for all images	115 (85.8%)	106 (93%)
g38	Each FRAME must reference an HTML file	30 (22.4%)	24 (21.1%)
g39	Give each frame a title	29 (21.6%)	25 (21.9%)
g10	Provide alternative text for all image-type buttons in forms	25 (18.7%)	9 (7.9%)
g240	Provide alternative text for all image map hot-spots	24 (17.9%)	25 (21.9%)
g21	Provide alternative text for each APPLET	10 (7.5%)	10 (8.8%)

Figure K.1: Bobby Priority 1 diagnostics

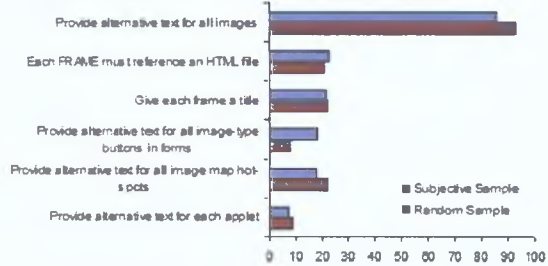


Table K.5: Density of Bobby Priority 1 diagnostics

	Subjective	Random
Web sites with Bobby completed successfully	134	114
Web sites that triggered 0 distinct diagnostics	16 (11.9%)	7 (6.1%)
Web sites that triggered 1 distinct diagnostic	56 (41.8%)	55 (48.2%)
Web sites that triggered 2 distinct diagnostic	32 (23.9%)	25 (21.9%)
Web sites that triggered 3 distinct diagnostics	13 (9.7%)	16 (14%)
Web sites that triggered 4 distinct diagnostics	11 (8.2%)	9 (7.9%)
Web sites that triggered 5 distinct diagnostics	6 (4.5%)	2 (1.8%)

Figure K.2: Density of Bobby Priority 1 diagnostics

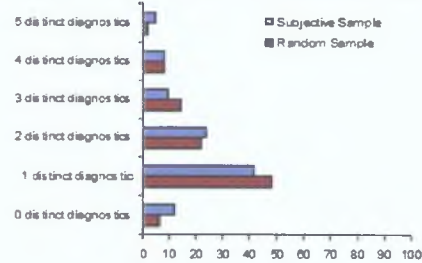


Table K.6: **Bobby Priority 2 diagnostics triggered during the investigation**

ID		Subjective	Random
g104	Use relative sizing and positioning (% value) rather than absolute (pixels)	129 (96.3%)	112 (98.2%)
g271	Use a public text identifier in a DOCTYPE statement	102 (76.1%)	100 (87.7%)
g41	Explicitly associate form controls and their labels with the LABEL element	100 (74.6%)	71 (62.3%)
g269	Make sure event handlers do not require use of a mouse	97 (72.4%)	85 (74.6%)
g34	Create link phrases that make sense when read out of context	57 (42.5%)	41 (36%)
g273	Include a document TITLE	17 (12.7%)	18 (15.8%)
g2	Nest headings properly	11 (8.2%)	17 (14.9%)
g37	Provide a NOFRAMES section when using FRAMES	6 (4.5%)	3 (2.6%)
g254	Do not cause a page to redirect to a new URL	3 (2.2%)	4 (3.5%)
g5	Avoid scrolling text created with the MARQUEE element	2 (1.5%)	9 (7.9%)
g33	Do not cause a page to refresh automatically	2 (1.5%)	1 (0.9%)
g4	Avoid blinking text created with the BLINK element	1 (0.7%)	2 (1.8%)

Figure K.3: Bobby Priority 2 diagnostics

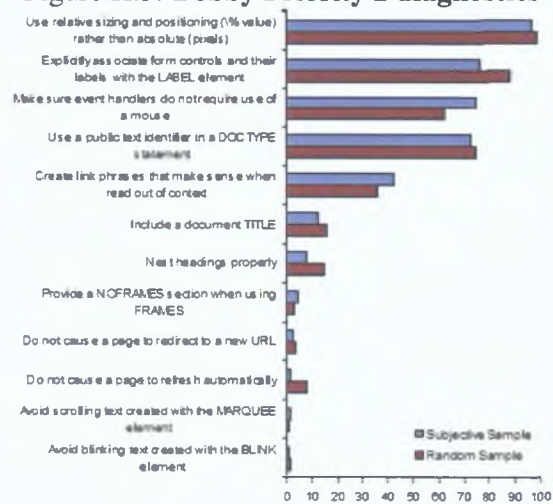
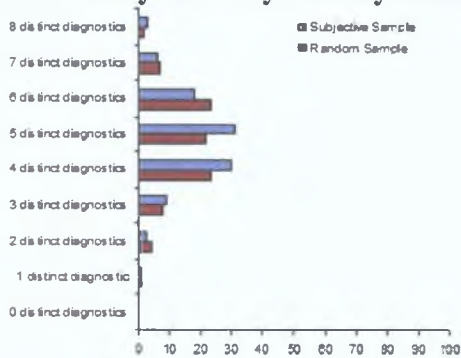


Table K.7: **Density of Bobby Priority 2 diagnostics**

	Subjective	Random
Web sites with Bobby completed successfully	134	114
Web sites that triggered 0 distinct diagnostics	0 (0%)	0 (0%)
Web sites that triggered 1 distinct diagnostic	1 (0.7%)	1 (0.9%)
Web sites that triggered 2 distinct diagnostics	3 (2.2%)	5 (4.4%)
Web sites that triggered 3 distinct diagnostics	12 (9%)	8 (7%)
Web sites that triggered 4 distinct diagnostics	40 (29.9%)	28 (24.6%)
Web sites that triggered 5 distinct diagnostics	42 (31.3%)	37 (32.5%)
Web sites that triggered 6 distinct diagnostics	24 (17.9%)	25 (21.9%)
Web sites that triggered 7 distinct diagnostics	8 (6%)	9 (7.9%)
Web sites that triggered 8 distinct diagnostics	4 (3%)	1 (0.9%)

Figure K.4: **Density of Bobby Priority 2 diagnostics**



### K.3 HTML technical standards conformance investigation results

Table K.8: Details regarding OpenSP executions

	Subjective	Random
Web sites processed by OpenSP	156	123
Web sites where all the web pages had usable document type information	1 (0.6%)	2 (1.6%)
Web sites considered for HTML defects analysis	67 (42.9%)	36 (29.3%)

Table K.9: Document Type Declaration in web pages considered by OpenSP

	Subjective	Random
Web pages processed by OpenSP	2,825	2,288
No document type information	1,866 (66.1%)	1,732 (75.7%)
Incorrect document type information	23 (0.8%)	42 (1.8%)
Usable document type information	932 (33%)	465 (20.3%)
Considered for HTML defects analysis (in web sites with at least 3 web pages and 100 KB of data with usable document type information)	910 (32.2%)	454 (19.8%)

Table K.10: The 10 most common OpenSP diagnostics triggered in the investigation

ID		Subjective	Random
108	Undefined attribute	66 (98.5%)	33 (91.7%)
127	Required attribute not specified	54 (80.6%)	19 (52.8%)
64	Element not allowed by document type	53 (79.1%)	29 (80.6%)
79	End tag for not opened element	53 (79.1%)	27 (75%)
139	Non SGML character number	35 (52.2%)	20 (55.6%)
68	Missing required end tag (element DTD)	35 (52.2%)	20 (55.6%)
25	General entity not defined and no default entity	34 (50.7%)	17 (47.2%)
73	End tag for element not finished	32 (47.8%)	11 (30.6%)
82	Attribute value must be literal	27 (40.3%)	16 (44.4%)
131	Attribute value not allowed	27 (40.3%)	10 (27.8%)

Figure K.5: The 10 most common OpenSP diagnostics

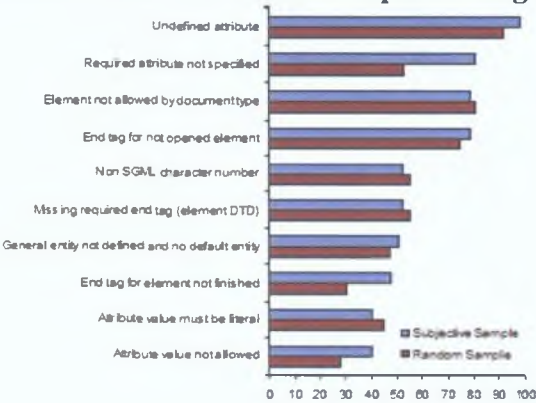




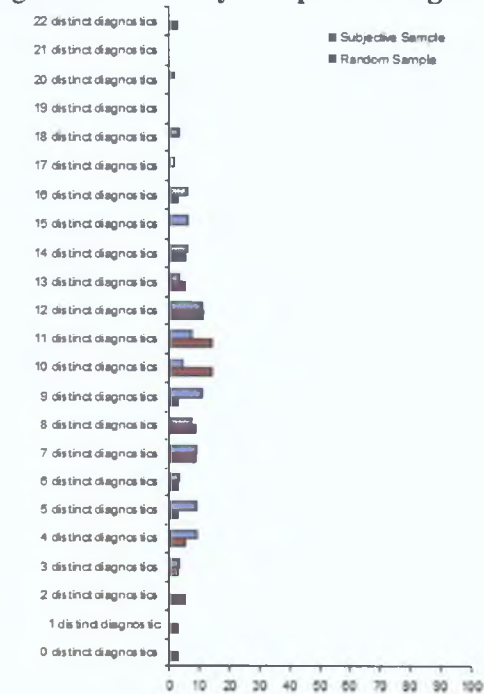
Table K.11: **Density of OpenSP diagnostics**

	Subjective	Random
Web sites considered for HTML defects analysis	67	36
Web sites that triggered 0 distinct diagnostics	0 (0%)	1 (2.8%)
Web sites that triggered 1 distinct diagnostic	0 (0%)	1 (2.8%)
Web sites that triggered 2 distinct diagnostics	0 (0%)	2 (5.6%)
Web sites that triggered 3 distinct diagnostics	2 (3%)	1 (2.8%)
Web sites that triggered 4 distinct diagnostics	6 (9%)	2 (5.6%)
Web sites that triggered 5 distinct diagnostics	6 (9%)	1 (2.8%)
Web sites that triggered 6 distinct diagnostics	2 (3%)	1 (2.8%)
Web sites that triggered 7 distinct diagnostics	6 (9%)	3 (8.3%)
Web sites that triggered 8 distinct diagnostics	5 (7.5%)	3 (8.3%)
Web sites that triggered 9 distinct diagnostics	7 (10.4%)	1 (2.8%)
Web sites that triggered 10 distinct diagnostics	3 (4.5%)	5 (13.9%)
Web sites that triggered 11 distinct diagnostics	5 (7.5%)	5 (13.9%)
Web sites that triggered 12 distinct diagnostics	7 (10.4%)	4 (11.1%)
Web sites that triggered 13 distinct diagnostics	2 (3%)	2 (5.6%)
Web sites that triggered 14 distinct diagnostics	4 (6%)	2 (5.6%)
Web sites that triggered 15 distinct diagnostics	4 (6%)	0 (0%)
Web sites that triggered 16 distinct diagnostics	4 (6%)	1 (2.8%)

Table K.11: **Density of OpenSP diagnostics**

	Subjective	Random
Web sites that triggered 17 distinct diagnostics	1 (1.5%)	0 (0%)
Web sites that triggered 18 distinct diagnostics	2 (3%)	0 (0%)
Web sites that triggered 19 distinct diagnostics	0 (0%)	0 (0%)
Web sites that triggered 20 distinct diagnostics	1 (1.5%)	0 (0%)
Web sites that triggered 21 distinct diagnostics	0 (0%)	0 (0%)
Web sites that triggered 22 distinct diagnostics	0 (0%)	1 (2.8%)

Figure K.6: **Density of OpenSP diagnostics**



## **Appendix L**

### **Results of surveys conducted on the subjective and random web samples of Irish web sites (December 2003)**

#### **L.1 Web content mirroring process results**

Table L.1: Results of the web content sampling process

	Subjective	Random
Data amount retrieved	34 MB	26 MB
Web pages considered for mirroring	3,051	3,043
Web pages correctly retrieved (size>0 and no retrieval errors)	2,667 (87.4%)	2,541 (83.5%)
Web pages in web sites qualified for conformance investigations	2,531 (83%)	2,064 (67.8%)
Web sites qualified for conformance investigations	153 (71.5%)	111 (40.8%)

Table L.2: Details regarding the web sites that didn't qualify for investigations

	Subjective	Random
Web sites not qualified for investigations	61	161
No data retrieved	10 (16.4%)	15 (9.3%)
Only the main page retrieved (size>0)	32 (52.5%)	102 (63.4%)
Less than 3 pages (2) and at least 100 KB retrieved	0 (0%)	1 (0.6%)
Less than 100 KB and at least 3 pages retrieved	14 (23%)	40 (24.8%)
Less than 3 pages (2) and less than 100 KB (but more than 0) retrieved	5 (8.2%)	3 (1.9%)

## L.2 WCAG 1.0 conformance investigation results

Table L.3: Details regarding Bobby executions

	Subjective	Random
Web sites considered by Bobby	153	111
Bobby abnormally terminated	10 (6.5%)	3 (2.7%)
Bobby "locked up"	7 (4.6%)	4 (3.6%)
Bobby completed successfully	136 (88.9%)	104 (93.7%)

Table L.4: Bobby Priority 1 diagnostics triggered during the investigation

ID		Subjective	Random
g9	Provide alternative text for all images	115 (84.6%)	94 (90.4%)
g38	Each FRAME must reference an HTML file	32 (23.5%)	23 (22.1%)
g39	Give each frame a title	31 (22.8%)	23 (22.1%)
g240	Provide alternative text for all image map hot-spots	25 (18.4%)	20 (19.2%)
g10	Provide alternative text for all image-type buttons in forms	23 (16.9%)	10 (9.6%)
g21	Provide alternative text for each APPLET	10 (7.4%)	8 (7.7%)

Figure L.1: Bobby Priority 1 diagnostics

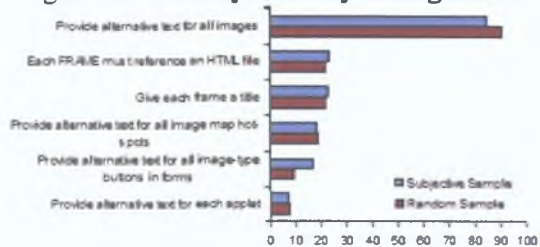


Table L.5: Density of Bobby Priority 1 diagnostics

	Subjective	Random
Web sites with Bobby completed successfully	136	104
Web sites that triggered 0 distinct diagnostics	17 (12.5%)	7 (6.7%)
Web sites that triggered 1 distinct diagnostic	58 (42.6%)	50 (48.1%)
Web sites that triggered 2 distinct diagnostic	28 (20.6%)	25 (24%)
Web sites that triggered 3 distinct diagnostics	18 (13.2%)	12 (11.5%)
Web sites that triggered 4 distinct diagnostics	8 (5.9%)	8 (7.7%)
Web sites that triggered 5 distinct diagnostics	6 (4.4%)	2 (1.9%)
Web sites that triggered 6 distinct diagnostics	1 (0.7%)	0 (0%)

Figure L.2: Density of Bobby Priority 1 diagnostics

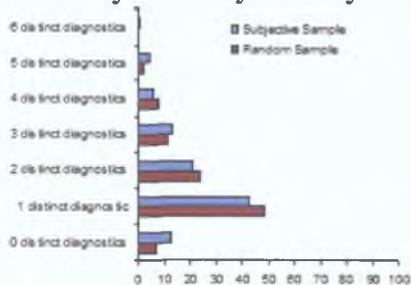


Table L.6: **Bobby Priority 2 diagnostics triggered during the investigation**

ID		Subjective	Random
g104	Use relative sizing and positioning (% value) rather than absolute (pixels)	130 (95.6%)	102 (98.1%)
g41	Explicitly associate form controls and their labels with the LABEL element	101 (74.3%)	58 (55.8%)
g269	Make sure event handlers do not require use of a mouse	100 (73.5%)	76 (73.1%)
g271	Use a public text identifier in a DOCTYPE statement	94 (69.1%)	83 (79.8%)
g34	Create link phrases that make sense when read out of context	60 (44.1%)	43 (41.3%)
g273	Include a document TITLE	18 (13.2%)	20 (19.2%)
g2	Nest headings properly	9 (6.6%)	20 (19.2%)
g37	Provide a NOFRAMES section when using FRAMES	6 (4.4%)	3 (2.9%)
g254	Do not cause a page to redirect to a new URL	4 (2.9%)	0 (0%)
g33	Do not cause a page to refresh automatically	3 (2.2%)	2 (1.9%)
g5	Avoid scrolling text created with the MARQUEE element	2 (1.5%)	12 (11.5%)
g4	Avoid blinking text created with the BLINK element	0 (0%)	3 (2.9%)

Figure L.3: Bobby Priority 2 diagnostics

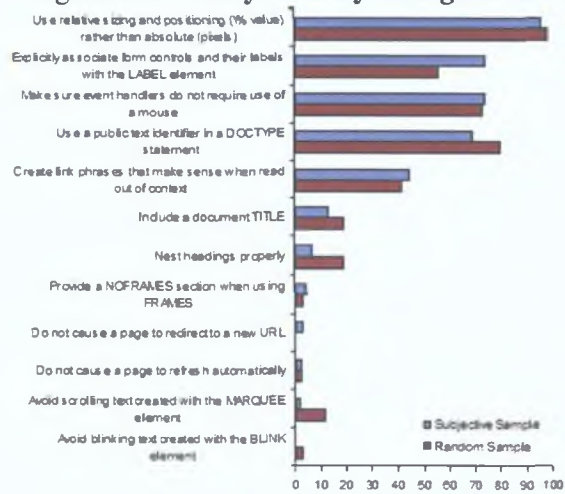
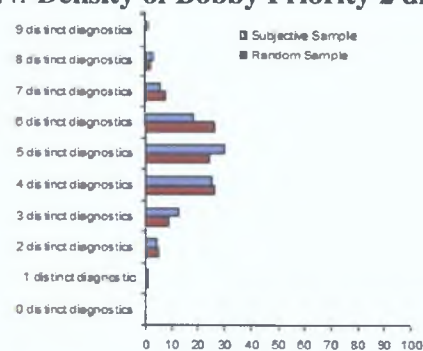




Table L.7: **Density of Bobby Priority 2 diagnostics**

	Subjective	Random
Web sites for which Bobby completed successfully	136	104
Web sites that triggered 0 distinct diagnostic	0 (0%)	0 (0%)
Web sites that triggered 1 distinct diagnostic	1 (0.7%)	1 (1%)
Web sites that triggered 2 distinct diagnostics	6 (4.4%)	5 (4.8%)
Web sites that triggered 3 distinct diagnostics	17 (12.5%)	9 (8.7%)
Web sites that triggered 4 distinct diagnostics	34 (25%)	27 (26%)
Web sites that triggered 5 distinct diagnostics	40 (29.4%)	25 (24%)
Web sites that triggered 6 distinct diagnostics	25 (18.4%)	27 (26%)
Web sites that triggered 7 distinct diagnostics	8 (5.9%)	8 (7.7%)
Web sites that triggered 8 distinct diagnostics	4 (2.9%)	2 (1.9%)
Web sites that triggered 9 distinct diagnostics	1 (0.7%)	0 (0%)

Figure L.4: **Density of Bobby Priority 2 diagnostics**



### L.3 HTML technical standards conformance investigation results

Table L.8: Details regarding OpenSP executions

	Subjective	Random
Web sites considered by OpenSP	153	111
Web sites where all the web pages had correct DOCTYPE	0 (0%)	2 (1.8%)
Web sites considered for further analysis	74 (48.4%)	39 (35.1%)

Table L.9: Document Type Declaration in web pages considered by OpenSP

	Subjective	Random
Web pages processed by OpenSP	2,531	2,064
No document type information	1,547 (61.1%)	1,435 (69.5%)
Incorrect document type information	8 (0.3%)	78 (3.8%)
Usable document type information	974 (38.5%)	509 (24.7%)
Considered for HTML defects analysis (in web sites with at least 3 web pages and 100 KB of data with usable document type information)	952 (37.6%)	500 (24.2%)

Table L.10: The 10 most common OpenSP diagnostics triggered in the investigation

ID		Subjective	Random
108	Undefined attribute	68 (91.9%)	36 (92.3%)
79	End tag for not opened element	68 (91.9%)	28 (71.8%)
127	Required attribute not specified	65 (87.8%)	28 (71.8%)
64	Element not allowed by document type	60 (81.1%)	31 (79.5%)
68	Missing required end tag (element DTD)	42 (56.8%)	22 (56.4%)
139	Non SGML character number	37 (50%)	24 (61.5%)
25	General entity not defined and no default entity	36 (48.6%)	20 (51.3%)
73	End tag for element not finished	35 (47.3%)	16 (41%)
131	Attribute value not allowed	34 (45.9%)	15 (38.5%)
82	Attribute value must be literal	27 (36.5%)	18 (46.2%)

Figure L.5: The 10 most common OpenSP diagnostics

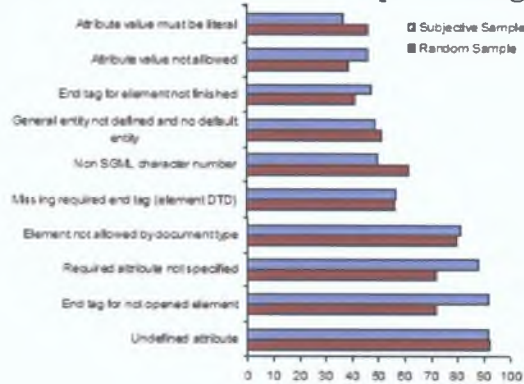


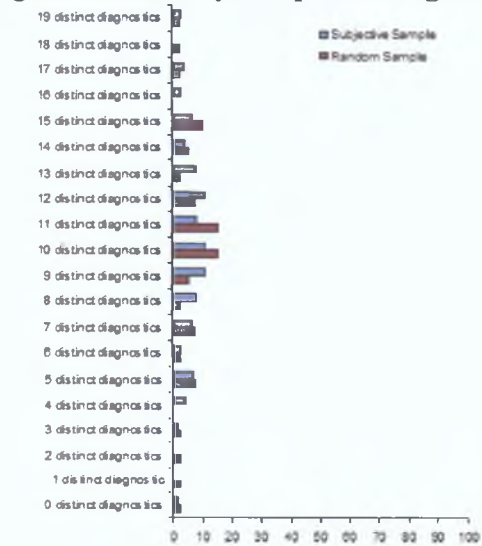
Table L.11: **Density of OpenSP diagnostics**

	Subjective	Random
Web sites considered for further investigation	74	39
Web sites that triggered 0 distinct diagnostics	1 (1.4%)	1 (2.6%)
Web sites that triggered 1 distinct diagnostic	0 (0%)	1 (2.6%)
Web sites that triggered 2 distinct diagnostics	0 (0%)	1 (2.6%)
Web sites that triggered 3 distinct diagnostics	1 (1.4%)	1 (2.6%)
Web sites that triggered 4 distinct diagnostics	3 (4.1%)	0 (0%)
Web sites that triggered 5 distinct diagnostics	5 (6.8%)	3 (7.7%)
Web sites that triggered 6 distinct diagnostics	2 (2.7%)	1 (2.6%)
Web sites that triggered 7 distinct diagnostics	5 (6.8%)	3 (7.7%)
Web sites that triggered 8 distinct diagnostics	6 (8.1%)	1 (2.6%)
Web sites that triggered 9 distinct diagnostics	8 (10.8%)	2 (5.1%)
Web sites that triggered 10 distinct diagnostics	8 (10.8%)	6 (15.4%)
Web sites that triggered 11 distinct diagnostics	6 (8.1%)	6 (15.4%)
Web sites that triggered 12 distinct diagnostics	8 (10.8%)	3 (7.7%)
Web sites that triggered 13 distinct diagnostics	6 (8.1%)	1 (2.6%)
Web sites that triggered 14 distinct diagnostics	3 (4.1%)	2 (5.1%)
Web sites that triggered 15 distinct diagnostics	5 (6.8%)	4 (10.3%)
Web sites that triggered 16 distinct diagnostics	2 (2.7%)	0 (0%)

Table L.11: **Density of OpenSP diagnostics**

	Subjective	Random
Web sites that triggered 17 distinct diagnostics	3 (4.1%)	1 (2.6%)
Web sites that triggered 18 distinct diagnostics	0 (0%)	1 (2.6%)
Web sites that triggered 19 distinct diagnostics	2 (2.7%)	1 (2.6%)
Web sites that triggered 20 distinct diagnostics	0 (0%)	0 (0%)
Web sites that triggered 21 distinct diagnostics	0 (0%)	0 (0%)
Web sites that triggered 22 distinct diagnostics	1 (1.4%)	0 (0%)

Figure L.6: **Density of OpenSP diagnostics**



## **Appendix M**

### **Results of surveys conducted on the subjective and random web samples of Irish web sites (May 2004)**

#### **M.1 Web content mirroring process results**

Table M.1: Results of the web content sampling process

	Subjective	Random
Data amount retrieved	36 MB	26 MB
Web pages considered for mirroring	3,052	2,901
Web pages correctly retrieved (size>0 and no retrieval errors)	2,690 (88.1%)	2,400 (82.7%)
Web pages in web sites qualified for conformance investigations	2,582 (84.6%)	1,966 (67.8%)
Web sites qualified for conformance investigations	162 (75.7%)	110 (40.4%)

Table M.2: Details regarding the web sites that didn't qualify for investigations

	Subjective	Random
Web sites not qualified for investigations	52	162
No data retrieved	10 (19.2%)	21 (13%)
Only the main page retrieved (size>0)	25 (48.1%)	103 (63.6%)
Less than 3 pages (2) and at least 100 KB retrieved	0 (0%)	0 (0%)
Less than 100 KB and at least 3 pages retrieved	11 (21.2%)	29 (17.9%)
Less than 3 pages (2) and less than 100 KB (but more than 0) retrieved	6 (11.5%)	1 (0.6%)

## M.2 WCAG 1.0 conformance investigation results

Table M.3: Details regarding Bobby executions

	Subjective	Random
Web sites considered by Bobby	162	110
Bobby abnormally terminated	14 (8.6%)	3 (2.7%)
Bobby "locked up"	8 (4.9%)	6 (5.5%)
Bobby completed successfully	140 (86.4%)	101 (91.8%)

Table M.4: Bobby Priority 1 diagnostics triggered during the investigation

ID		Subjective	Random
g9	Provide alternative text for all images	113 (80.7%)	92 (91.1%)
g38	Each FRAME must reference an HTML file	25 (17.9%)	23 (22.8%)
g39	Give each frame a title	25 (17.9%)	22 (21.8%)
g10	Provide alternative text for all image-type buttons in forms	23 (16.4%)	12 (11.9%)
g240	Provide alternative text for all image map hot-spots	22 (15.7%)	22 (21.8%)
g21	Provide alternative text for each APPLET	11 (7.9%)	7 (6.9%)



Figure M.1: Bobby Priority 1 diagnostics

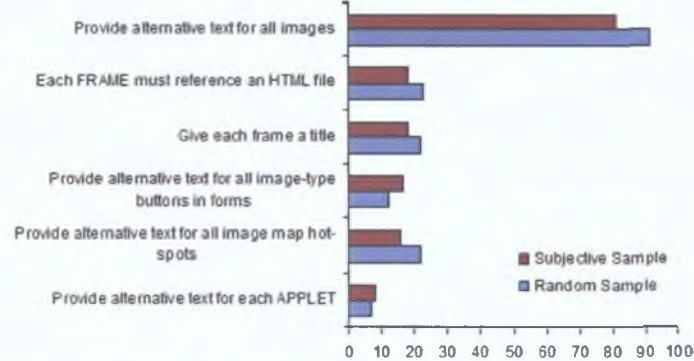


Table M.5: Density of Bobby Priority 1 diagnostics

	Subjective	Random
Web sites with Bobby completed successfully	140	101
Web sites that triggered 0 distinct diagnostics	21 (15%)	7 (6.9%)
Web sites that triggered 1 distinct diagnostic	65 (46.4%)	48 (47.5%)
Web sites that triggered 2 distinct diagnostic	29 (20.7%)	21 (20.8%)
Web sites that triggered 3 distinct diagnostics	10 (7.1%)	15 (14.9%)
Web sites that triggered 4 distinct diagnostics	10 (7.1%)	7 (6.9%)
Web sites that triggered 5 distinct diagnostics	4 (2.9%)	3 (3%)
Web sites that triggered 6 distinct diagnostics	1 (0.7%)	0 (0%)

Figure M.2: Density of Bobby Priority 1 diagnostics

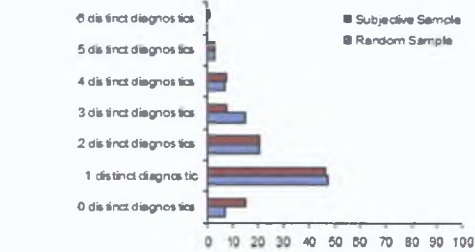


Figure M.3: Bobby Priority 2 diagnostics

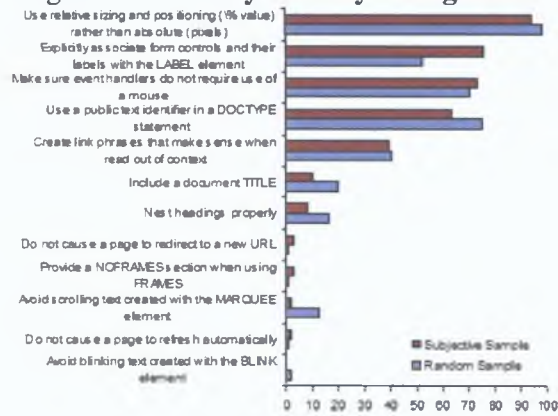


Figure M.4: Density of Bobby Priority 2 diagnostics

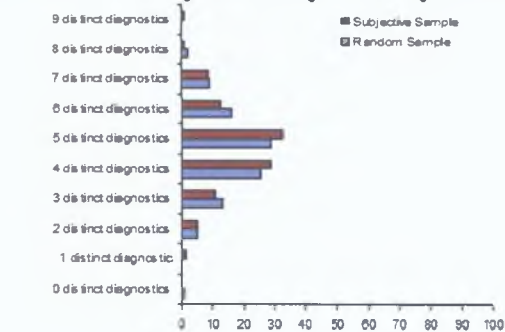


Table M.6: Bobby Priority 2 diagnostics triggered during the investigation

ID		Subjective	Random
g104	Use relative sizing and positioning (% value) rather than absolute (pixels)	132 (94.3%)	99 (98%)
g41	Explicitly associate form controls and their labels with the LABEL element	106 (75.7%)	53 (52.5%)
g269	Make sure event handlers do not require use of a mouse	103 (73.6%)	71 (70.3%)
g271	Use a public text identifier in a DOCTYPE statement	89 (63.6%)	76 (75.2%)
g34	Create link phrases that make sense when read out of context	55 (39.3%)	41 (40.6%)
g273	Include a document TITLE	14 (10%)	20 (19.8%)
g2	Nest headings properly	11 (7.9%)	17 (16.8%)
g37	Provide a NOFRAMES section when using FRAMES	4 (2.9%)	1 (1%)
g254	Do not cause a page to redirect to a new URL	4 (2.9%)	1 (1%)
g5	Avoid scrolling text created with the MARQUEE element	3 (2.1%)	13 (12.9%)
g33	Do not cause a page to refresh automatically	3 (2.1%)	1 (1%)
g4	Avoid blinking text created with the BLINK element	0 (0%)	2 (2%)

Table M.7: Density of Bobby Priority 2 diagnostics

	Subjective	Random
Web sites for which Bobby completed successfully	140	101
Web sites that triggered 0 distinct diagnostics	0 (0%)	1 (1%)
Web sites that triggered 1 distinct diagnostic	2 (1.4%)	0 (0%)
Web sites that triggered 2 distinct diagnostics	7 (5%)	5 (5%)
Web sites that triggered 3 distinct diagnostics	15 (10.7%)	13 (12.9%)
Web sites that triggered 4 distinct diagnostics	40 (28.6%)	26 (25.7%)
Web sites that triggered 5 distinct diagnostics	45 (32.1%)	29 (28.7%)
Web sites that triggered 6 distinct diagnostics	17 (12.1%)	16 (15.8%)
Web sites that triggered 7 distinct diagnostics	12 (8.6%)	9 (8.9%)
Web sites that triggered 8 distinct diagnostics	1 (0.7%)	2 (2%)
Web sites that triggered 9 distinct diagnostics	1 (0.7%)	0 (0%)

### M.3 HTML technical standards conformance investigation results

Table M.8: Details regarding OpenSP executions

	Subjective	Random
Web sites processed by OpenSP	162	110
Web sites where all the web pages had usable document type information	0 (0%)	1 (0.9%)
Web sites considered for HTML defects analysis	80 (49.4%)	45 (40.9%)

Table M.9: Document Type Declaration in web pages considered by OpenSP

	Subjective	Random
Web pages processed by OpenSP	2,582	1,966
No document type information	1,497 (58%)	1,310 (66.6%)
Incorrect document type information	16 (0.6%)	70 (3.6%)
Usable document type information	1,068 (41.4%)	549 (27.9%)
Considered for HTML defects analysis (in web sites with at least 3 web pages and 100 KB of data with usable document type information)	1,037 (40.2%)	542 (27.6%)

Table M.10: The 10 most common OpenSP diagnostics triggered in the investigation

ID		Subjective	Random
108	Undefined attribute	73 (91.3%)	42 (93.3%)
79	End tag for not opened element	70 (87.5%)	32 (71.1%)
127	Required attribute not specified	66 (82.5%)	34 (75.6%)
64	Element not allowed by document type	65 (81.3%)	35 (77.8%)
139	Non SGML character number	47 (58.8%)	27 (60%)
25	General entity not defined and no default entity	44 (55%)	22 (48.9%)
68	Missing required end tag (element DTD)	42 (52.5%)	28 (62.2%)
73	End tag for element not finished	39 (48.8%)	16 (35.6%)
131	Attribute value not allowed	35 (43.8%)	21 (46.7%)
82	Attribute value must be literal	26 (32.5%)	23 (51.1%)

Figure M.5: The 10 most common OpenSP diagnostics

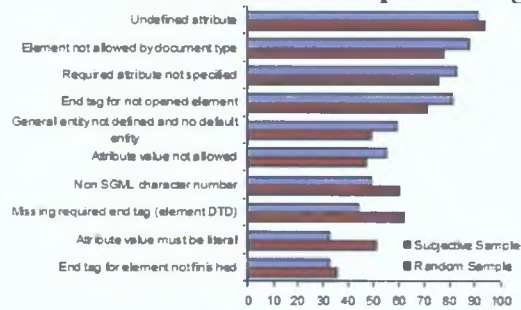


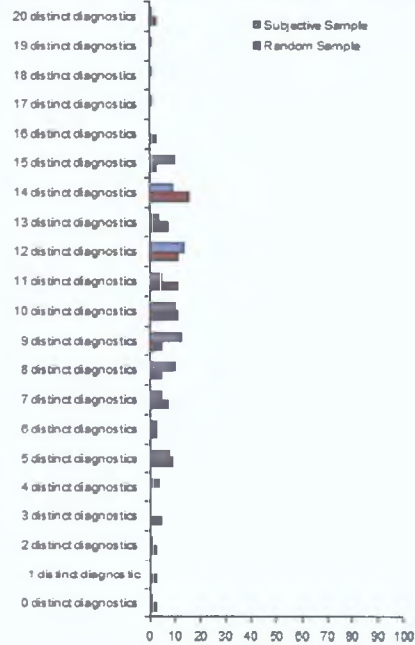
Table M.11: **Density of OpenSP diagnostics**

	Subjective	Random
Web sites considered for HTML defects analysis	80	45
Web sites that triggered 0 distinct diagnostics	1 (1.3%)	1 (2.2%)
Web sites that triggered 1 distinct diagnostic	0 (0%)	1 (2.2%)
Web sites that triggered 2 distinct diagnostics	1 (1.3%)	1 (2.2%)
Web sites that triggered 3 distinct diagnostics	0 (0%)	2 (4.4%)
Web sites that triggered 4 distinct diagnostics	3 (3.8%)	0 (0%)
Web sites that triggered 5 distinct diagnostics	6 (7.5%)	4 (8.9%)
Web sites that triggered 6 distinct diagnostics	2 (2.5%)	1 (2.2%)
Web sites that triggered 7 distinct diagnostics	4 (5%)	3 (6.7%)
Web sites that triggered 8 distinct diagnostics	8 (10%)	2 (4.4%)
Web sites that triggered 9 distinct diagnostics	10 (12.5%)	2 (4.4%)
Web sites that triggered 10 distinct diagnostics	8 (10%)	5 (11.1%)
Web sites that triggered 11 distinct diagnostics	4 (5%)	5 (11.1%)
Web sites that triggered 12 distinct diagnostics	11 (13.8%)	5 (11.1%)
Web sites that triggered 13 distinct diagnostics	3 (3.8%)	3 (6.7%)
Web sites that triggered 14 distinct diagnostics	7 (8.8%)	7 (15.6%)
Web sites that triggered 15 distinct diagnostics	8 (10%)	1 (2.2%)
Web sites that triggered 16 distinct diagnostics	0 (0%)	1 (2.2%)

Table M.11: **Density of OpenSP diagnostics**

	Subjective	Random
Web sites that triggered 17 distinct diagnostics	1 (1.3%)	0 (0%)
Web sites that triggered 18 distinct diagnostics	1 (1.3%)	0 (0%)
Web sites that triggered 19 distinct diagnostics	1 (1.3%)	0 (0%)
Web sites that triggered 20 distinct diagnostics	1 (1.3%)	1 (2.2%)

Figure M.6: **Density of OpenSP diagnostics**





## **Appendix N**

### **Results of surveys conducted on the subjective and random web samples of Irish web sites (December 2004)**

#### **N.1 Web content mirroring process results**

Table N.1: Results of the web content sampling process

	Subjective	Random
Data amount retrieved	32 MB	24 MB
Web pages considered for mirroring	2,749	2,542
Web pages correctly retrieved (size>0 and no retrieval errors)	2,318 (84.3%)	2,223 (87.5%)
Web pages in web sites qualified for conformance investigations	2,195 (79.8%)	1,769 (69.6%)
Web sites qualified for conformance investigations	143 (66.8%)	100 (36.8%)

Table N.2: Details regarding the web sites that didn't qualify for investigations

	Subjective	Random
Web sites not qualified for investigations	71	172
No data retrieved	19 (26.8%)	24 (14%)
Only the main page retrieved (size>0)	34 (47.9%)	110 (64%)
Less than 3 pages (2) and at least 100 KB retrieved	0 (0%)	0 (0%)
Less than 100 KB and at least 3 pages retrieved	14 (19.7%)	31 (18%)
Less than 3 pages (2) and less than 100 KB (but more than 0) retrieved	4 (5.6%)	7 (4.1%)

## N.2 WCAG 1.0 conformance investigation results

Table N.3: Details regarding Bobby executions

	Subjective	Random
Web sites considered by Bobby	143	100
Bobby abnormally terminated	8 (5.6%)	1 (1%)
Bobby “locked up”	5 (3.5%)	3 (3%)
Bobby completed successfully	130 (90.9%)	96 (96%)

Table N.4: Bobby Priority 1 diagnostics triggered during the investigation

ID		Subjective	Random
g9	Provide alternative text for all images	106 (81.5%)	88 (91.7%)
g38	Each FRAME must reference an HTML file	20 (15.4%)	20 (20.8%)
g39	Give each frame a title	20 (15.4%)	20 (20.8%)
g10	Provide alternative text for all image-type buttons in forms	20 (15.4%)	11 (11.5%)
g240	Provide alternative text for all image map hot-spots	16 (12.3%)	18 (18.8%)
g21	Provide alternative text for each APPLET	11 (8.5%)	7 (7.3%)

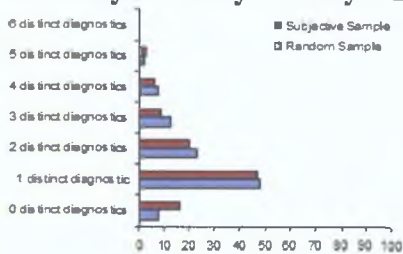
Figure N.1: Bobby Priority 1 diagnostics



Table N.5: Density of Bobby Priority 1 diagnostics

	Subjective	Random
Web sites with Bobby completed successfully	130	96
Web sites that triggered 0 distinct diagnostics	21 (16.2%)	7 (7.3%)
Web sites that triggered 1 distinct diagnostic	61 (46.9%)	46 (47.9%)
Web sites that triggered 2 distinct diagnostic	26 (20%)	22 (22.9%)
Web sites that triggered 3 distinct diagnostics	11 (8.5%)	12 (12.5%)
Web sites that triggered 4 distinct diagnostics	8 (6.2%)	7 (7.3%)
Web sites that triggered 5 distinct diagnostics	3 (2.3%)	2 (2.1%)
Web sites that triggered 6 distinct diagnostics	0 (0%)	0 (0%)

Figure N.2: Density of Bobby Priority 1 diagnostics



ID		Subjective	Random
g104	Use relative sizing and positioning (% value) rather than absolute (pixels)	122 (93.8%)	94 (97.9%)
g41	Explicitly associate form controls and their labels with the LABEL element	100 (76.9%)	47 (49%)
g269	Make sure event handlers do not require use of a mouse	96 (73.8%)	66 (68.8%)
g271	Use a public text identifier in a DOCTYPE statement	75 (57.7%)	74 (77.1%)
g34	Create link phrases that make sense when read out of context	52 (40%)	35 (36.5%)
g273	Include a document TITLE	13 (10%)	17 (17.7%)
g2	Nest headings properly	13 (10%)	13 (13.5%)
g33	Do not cause a page to refresh automatically	4 (3.1%)	1 (1%)
g37	Provide a NOFRAMES section when using FRAMES	4 (3.1%)	1 (1%)
g5	Avoid scrolling text created with the MARQUEE element	2 (1.5%)	11 (11.5%)
g254	Do not cause a page to redirect to a new URL	2 (1.5%)	0 (0%)
g4	Avoid blinking text created with the BLINK element	0 (0%)	1 (1%)

Figure N.3: Bobby Priority 2 diagnostics

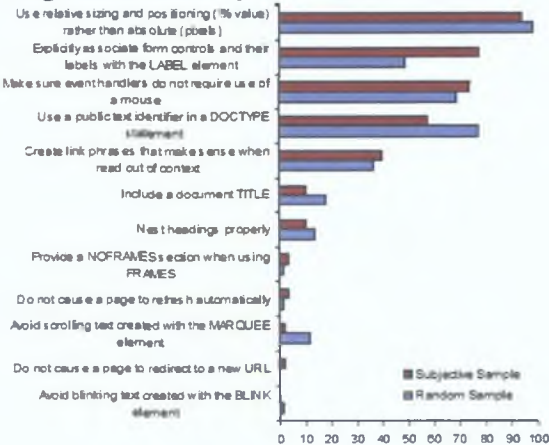


Figure N.4: Density of Bobby Priority 2 diagnostics

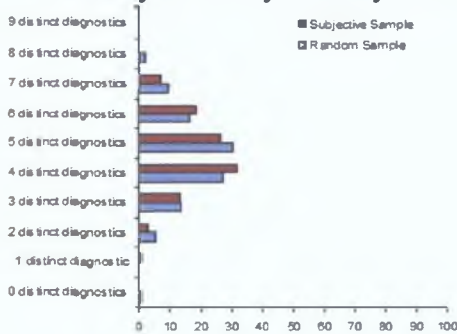


Table N.7: Density of Bobby Priority 2 diagnostics

	Subjective	Random
Web sites for which Bobby completed successfully	130	96
Web sites that triggered 0 distinct diagnostics	0 (0%)	1 (1%)
Web sites that triggered 1 distinct diagnostic	1 (0.8%)	0 (0%)
Web sites that triggered 2 distinct diagnostics	4 (3.1%)	5 (5%)
Web sites that triggered 3 distinct diagnostics	17 (13.1%)	13 (12.9%)
Web sites that triggered 4 distinct diagnostics	41 (31.5%)	26 (25.7%)
Web sites that triggered 5 distinct diagnostics	34 (26.2%)	29 (28.7%)
Web sites that triggered 6 distinct diagnostics	24 (18.5%)	16 (15.8%)
Web sites that triggered 7 distinct diagnostics	9 (6.9%)	9 (8.9%)
Web sites that triggered 8 distinct diagnostics	0 (0%)	2 (2%)
Web sites that triggered 9 distinct diagnostics	0 (0%)	0 (0%)

### N.3 HTML technical standards conformance investigation results

Table N.8: Details regarding OpenSP executions

	Subjective	Random
Web sites processed by OpenSP	143	100
Web sites where all the web pages had usable document type information	0 (0%)	1 (1%)
Web sites considered for HTML defects analysis	79 (55.2%)	49 (49%)

Table N.9: Document Type Declaration in web pages considered by OpenSP

	Subjective	Random
Web pages processed by OpenSP	2,195	1,769
No document type information	1,206 (54.9%)	1,071 (60.5%)
Incorrect document type information	8 (0.4%)	29 (1.6%)
Usable document type information	980 (44.6%)	632 (35.7%)
Considered for HTML defects analysis (in web sites with at least 3 web pages and 100 KB of data with usable document type information)	958 (43.6%)	623 (35.2%)



Table N.10: The 10 most common OpenSP diagnostics triggered in the investigation

ID		Subjective	Random
108	Undefined attribute	71 (89.9%)	44 (89.8%)
127	Required attribute not specified	69 (87.3%)	39 (79.6%)
79	End tag for not opened element	69 (87.3%)	36 (73.5%)
64	Element not allowed by document type	63 (79.7%)	36 (73.5%)
25	General entity not defined and no default entity	47 (59.5%)	25 (51%)
139	Non SGML character number	44 (55.7%)	33 (67.3%)
68	Missing required end tag (element DTD)	43 (54.4%)	24 (49%)
73	End tag for element not finished	39 (49.4%)	17 (34.7%)
131	Attribute value not allowed	38 (48.1%)	21 (42.9%)
82	Attribute value must be literal	24 (30.4%)	24 (49%)

Figure N.5: The 10 most common OpenSP diagnostics

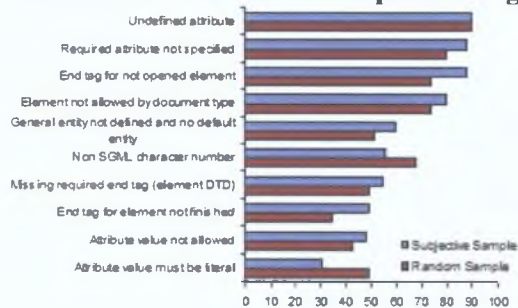


Table N.11: **Density of OpenSP diagnostics**

	Subjective	Random
Web sites considered for HTML defects analysis	79	49
Web sites that triggered 0 distinct diagnostics	0 (0%)	1 (2.2%)
Web sites that triggered 1 distinct diagnostic	1 (1.3%)	2 (4.4%)
Web sites that triggered 2 distinct diagnostics	1 (1.3%)	2 (4.4%)
Web sites that triggered 3 distinct diagnostics	1 (1.3%)	2 (4.4%)
Web sites that triggered 4 distinct diagnostics	1 (1.3%)	1 (2.2%)
Web sites that triggered 5 distinct diagnostics	6 (7.5%)	2 (4.4%)
Web sites that triggered 6 distinct diagnostics	1 (1.3%)	3 (6.7%)
Web sites that triggered 7 distinct diagnostics	6 (7.5%)	0 (0%)
Web sites that triggered 8 distinct diagnostics	7 (8.8%)	4 (8.9%)
Web sites that triggered 9 distinct diagnostics	7 (8.8%)	1 (2.2%)
Web sites that triggered 10 distinct diagnostics	5 (6.3%)	7 (15.6%)
Web sites that triggered 11 distinct diagnostics	5 (6.3%)	5 (11.1%)
Web sites that triggered 12 distinct diagnostics	12 (15%)	6 (13.3%)
Web sites that triggered 13 distinct diagnostics	5 (6.3%)	3 (6.7%)
Web sites that triggered 14 distinct diagnostics	9 (11.3%)	3 (6.7%)
Web sites that triggered 15 distinct diagnostics	7 (8.8%)	4 (8.9%)
Web sites that triggered 16 distinct diagnostics	1 (1.3%)	2 (4.4%)

Table N.11: **Density of OpenSP diagnostics**

	Subjective	Random
Web sites that triggered 17 distinct diagnostics	2 (2.5%)	0 (0%)
Web sites that triggered 18 distinct diagnostics	1 (1.3%)	1 (2.2%)
Web sites that triggered 19 distinct diagnostics	0 (0%)	0 (0%)
Web sites that triggered 20 distinct diagnostics	1 (1.3%)	0 (0%)

Figure N.6: **Density of OpenSP diagnostics**

